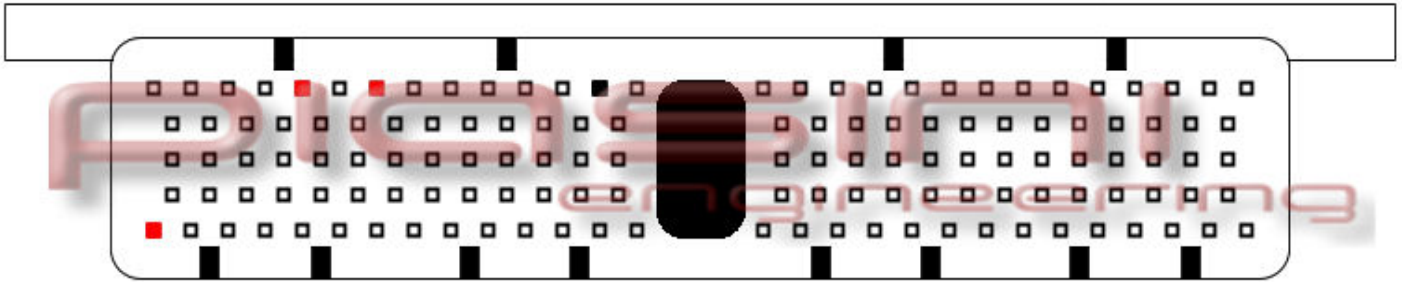




ECU : Jaguar



Connect as below:

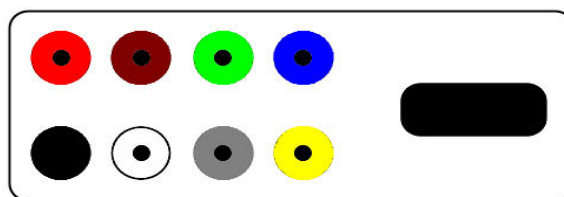
Serial Suite:

ECU Plug:

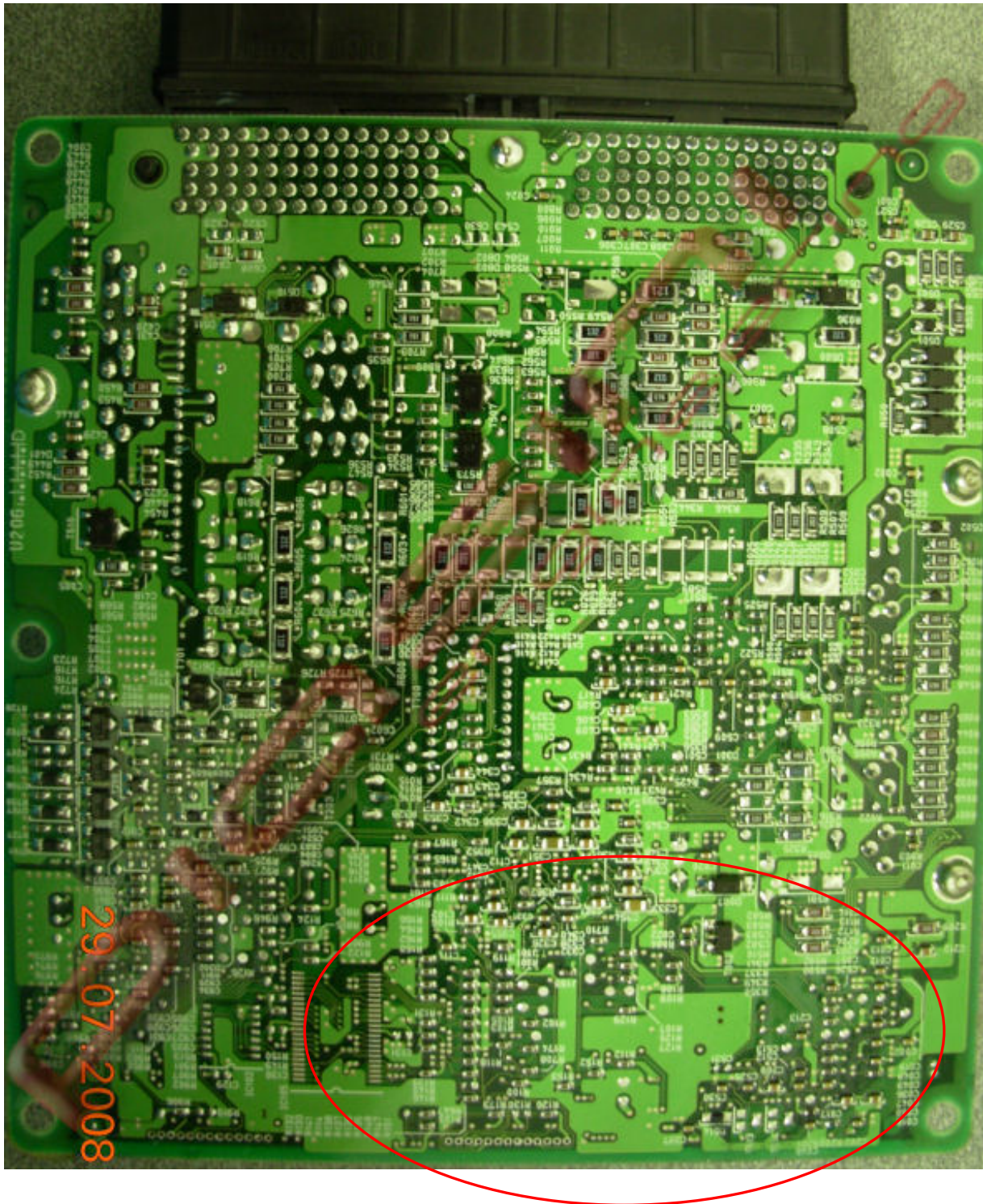
Red
Black

to
to

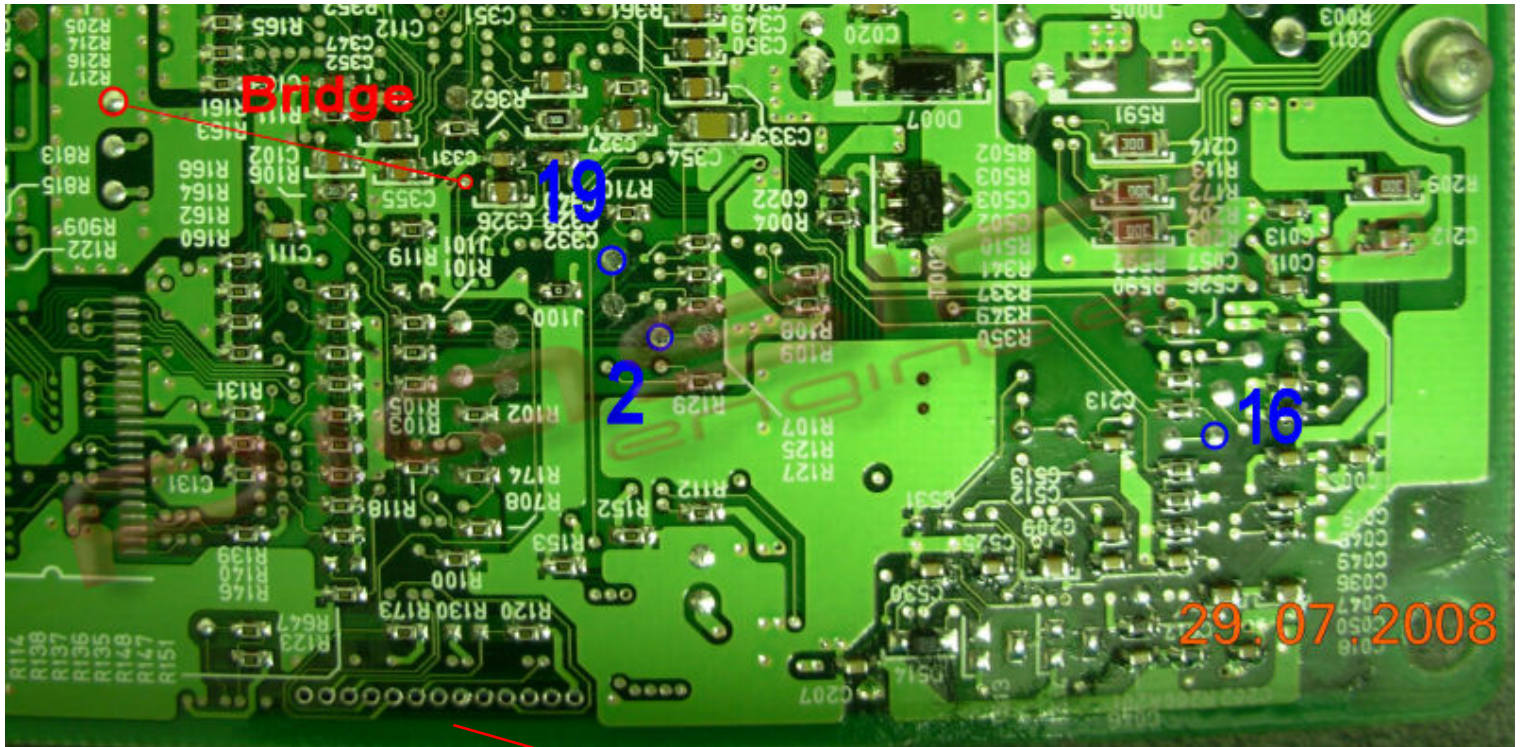
3 Pins Red (Power Supply +12 Volt)
1 Pins Black (Ground)



Where to connect the flat cable:

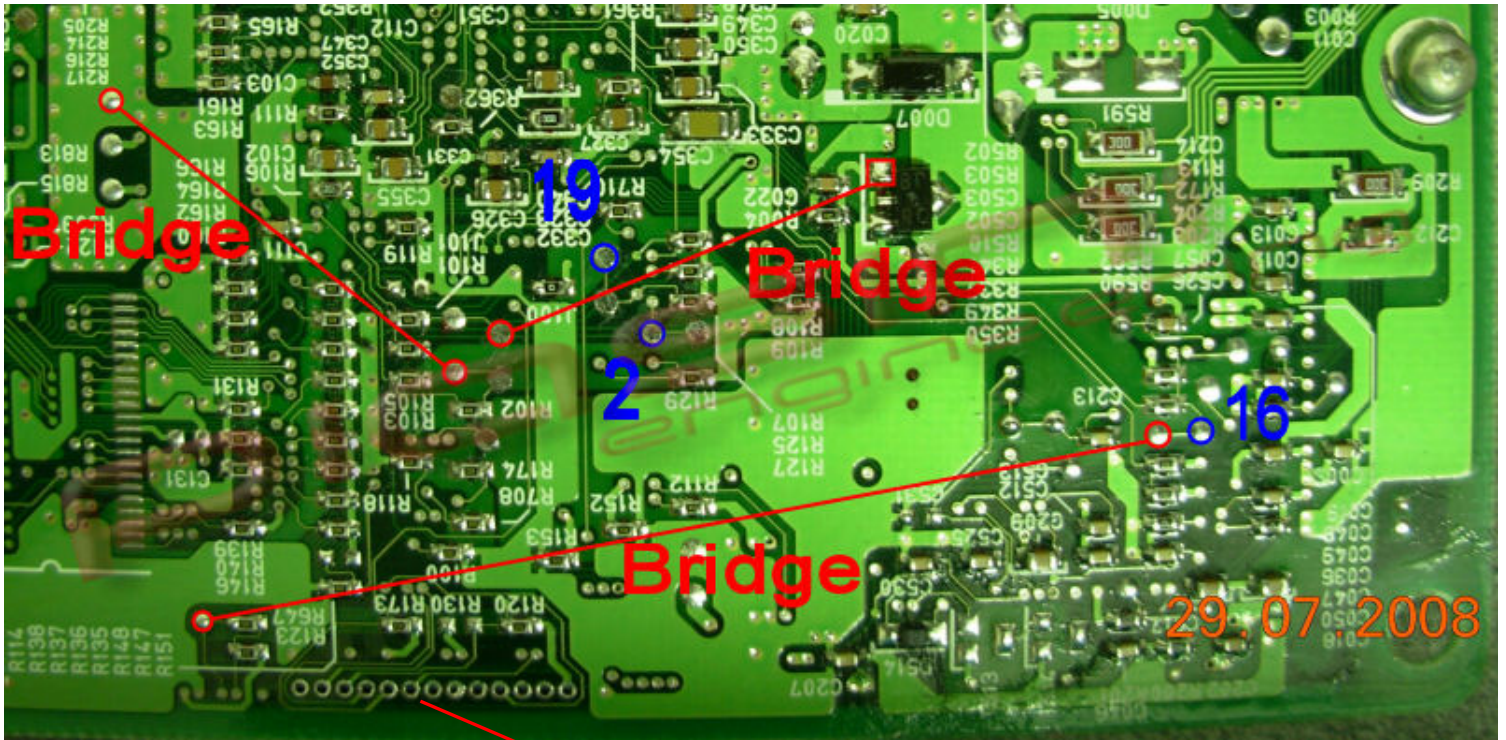


READ the ECU:



1. Put a wire (bridge) like in the picture;
2. Connect the flat cable pin like in the picture;
3. Connect the flat cable pin on the Circle following the number like in the picture.

WRITE the ECU:



You have to **remove the bridge used before**, and put another 3 wire(**Bridge**) like in the picture.

