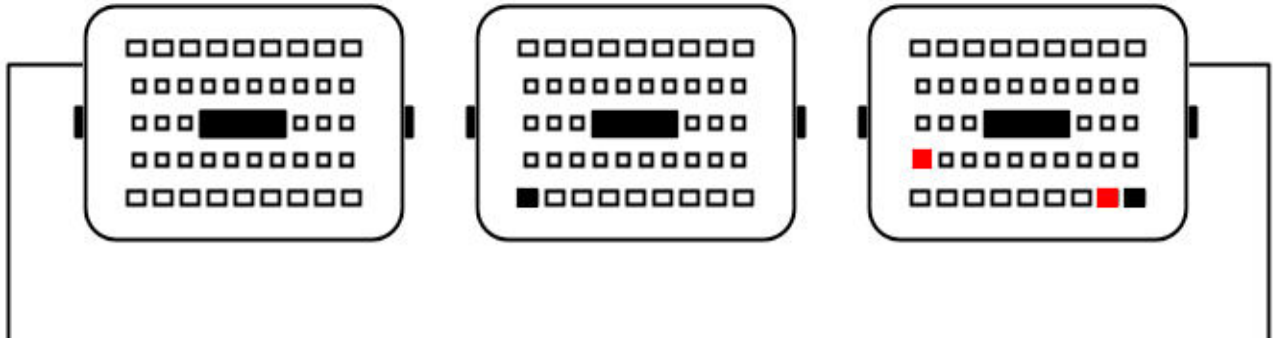




ECU : Honda Stream 1.8 i-VTEC Gearbox



Connect as below:

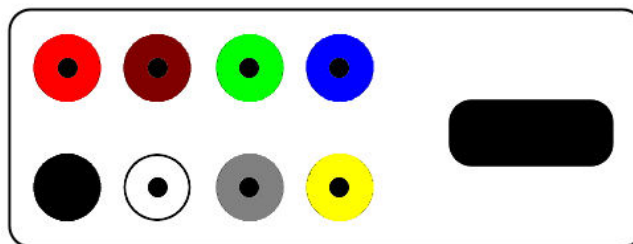
Serial Suite:

ECU Plug:

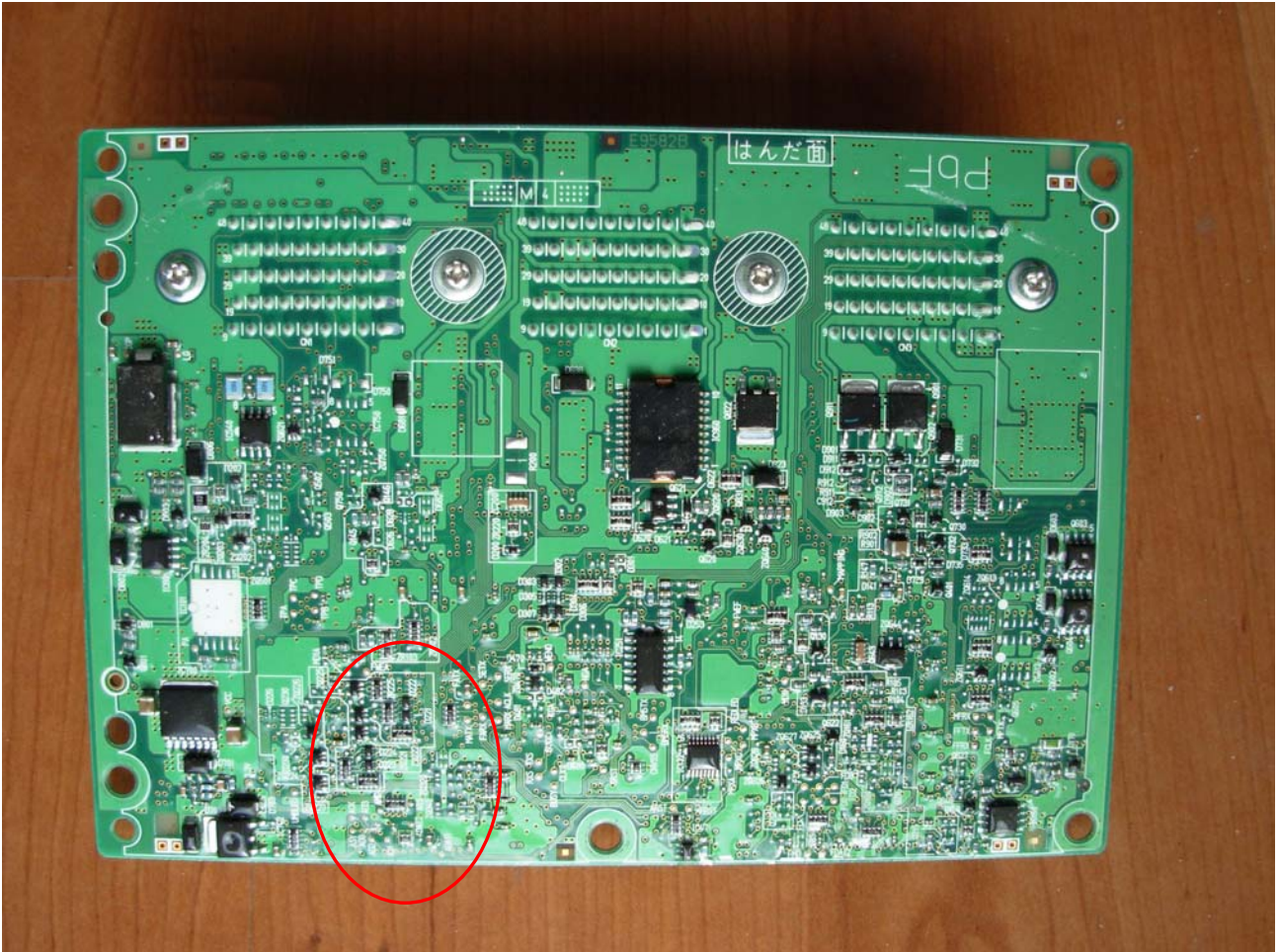
Red
Black

to
to

2 Pins Red (Power Supply +12 Volt)
2 Pins Black (Ground)

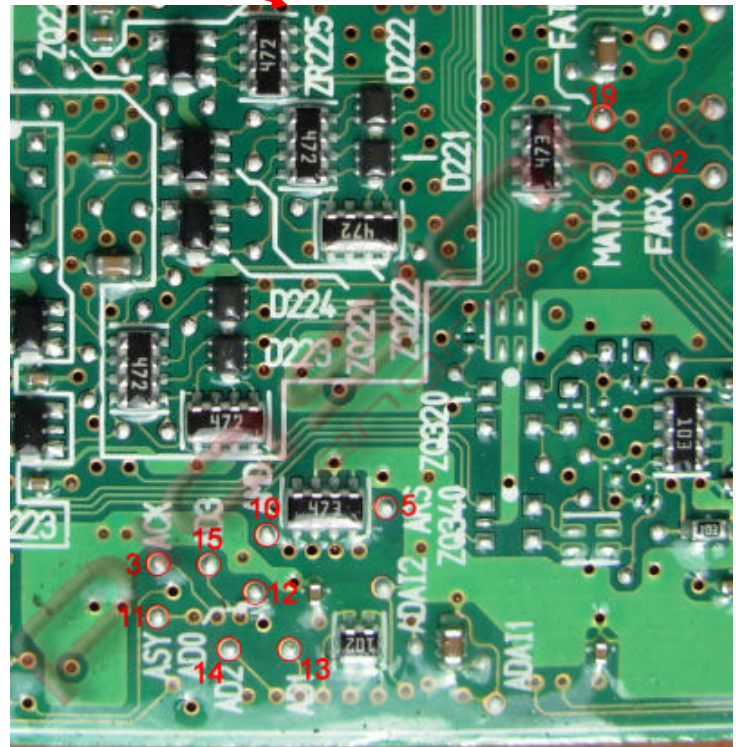
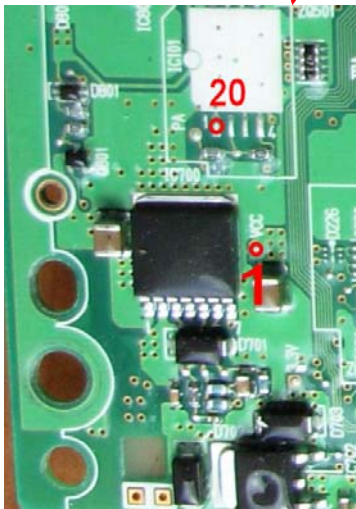
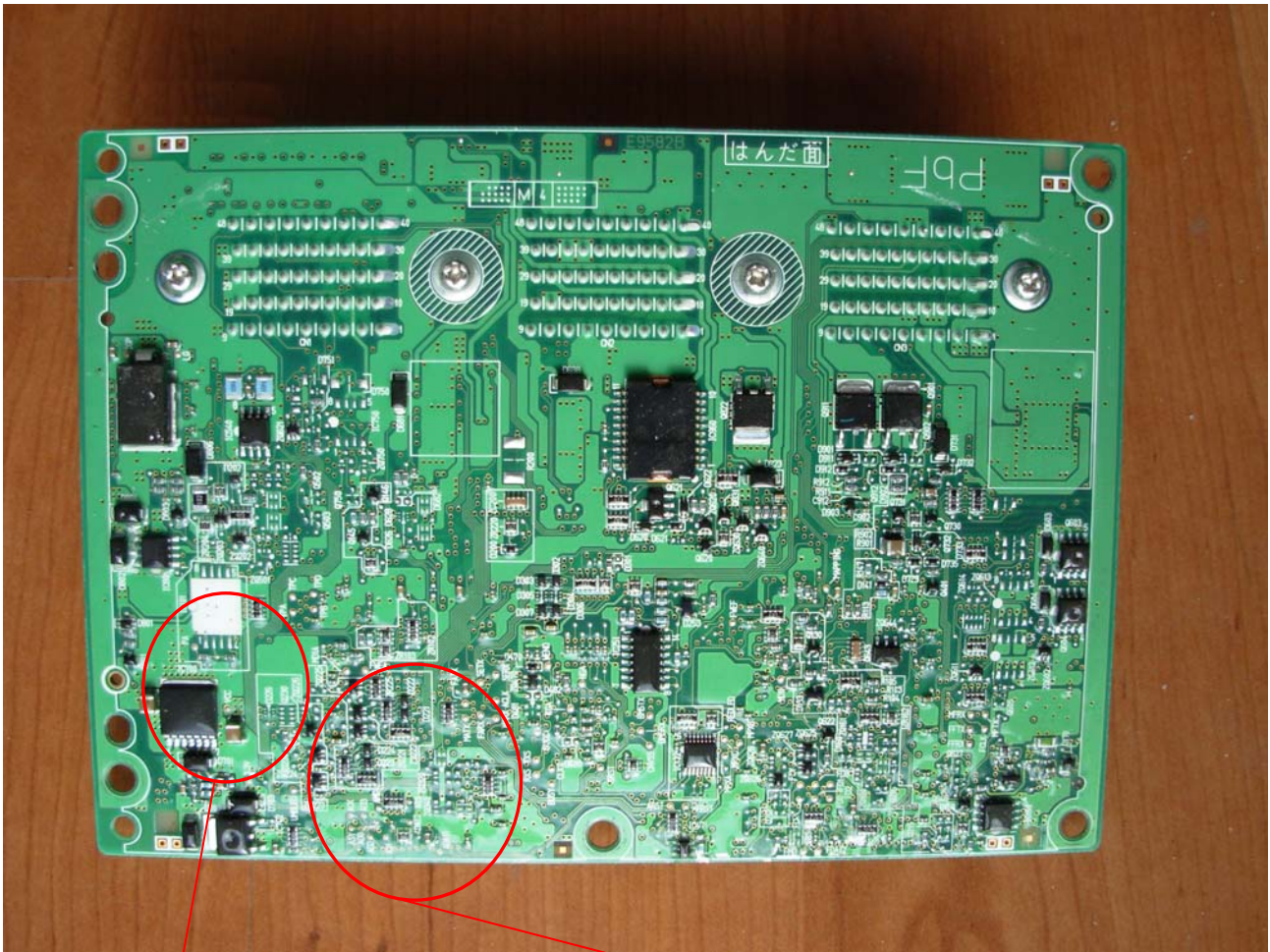


Where to connect the flat cable:



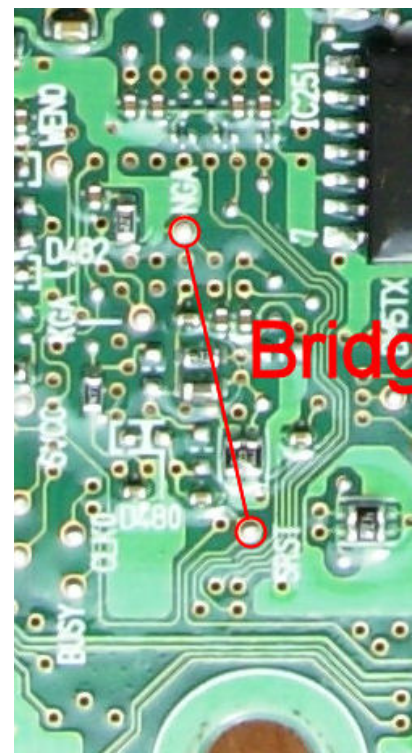
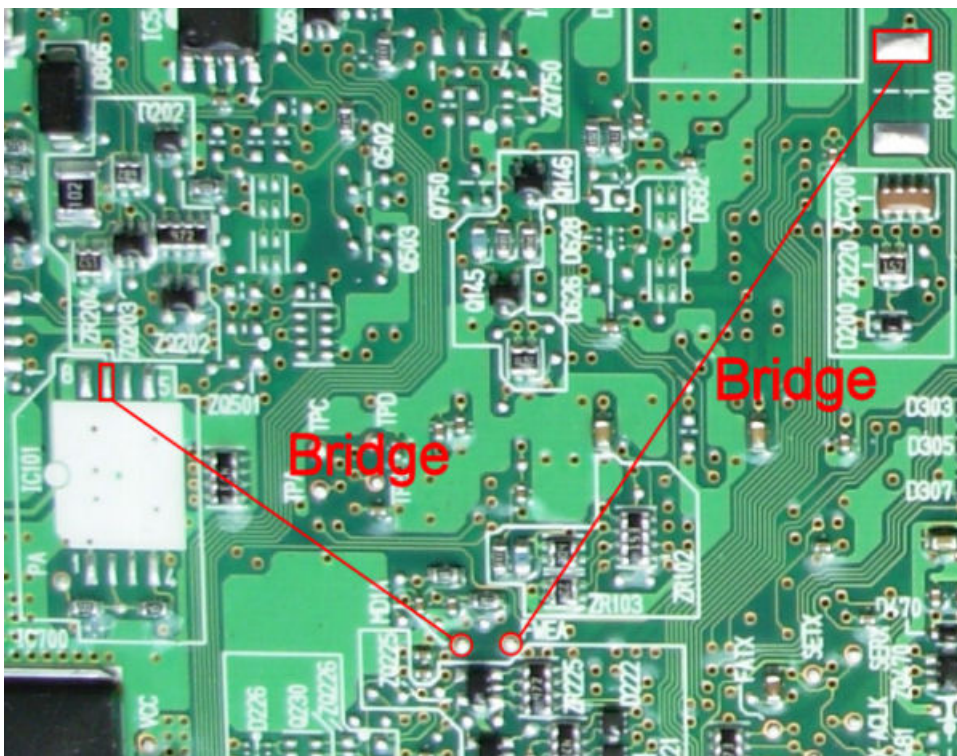
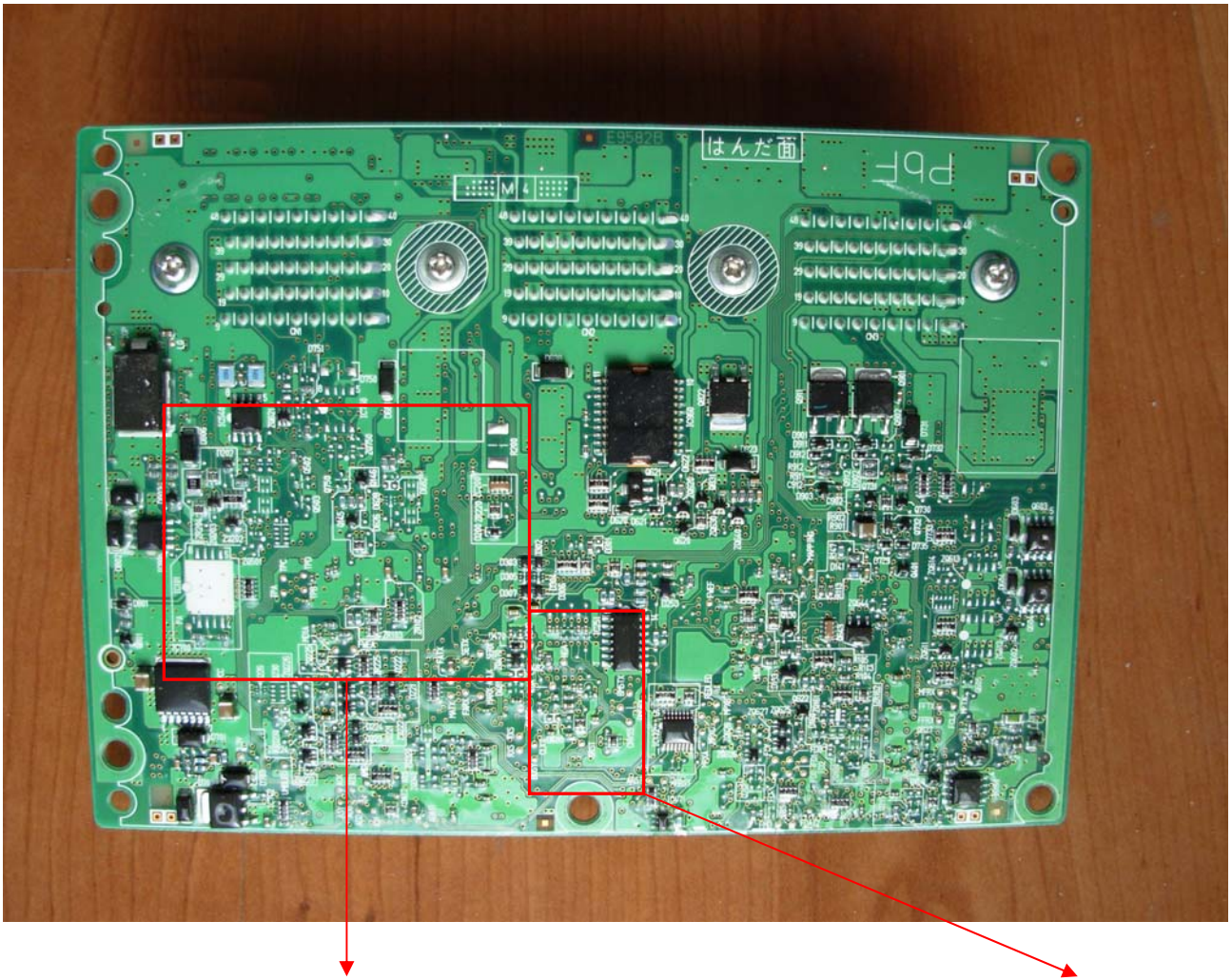
In the red circle you will find the pins where to connect the flat cable to perform the reading of the MCU flash that control the engine.

How to connect the flat cable for READ the ECU



Connect the flat cable flowing the number in the picture.

Write the ECU



Put 3 wire (bridge) like in the picture.