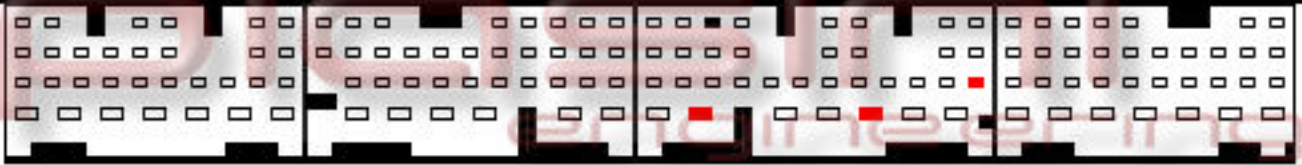




## ECU : Subaru Impreza STi 2.5 '07



Connect as below:

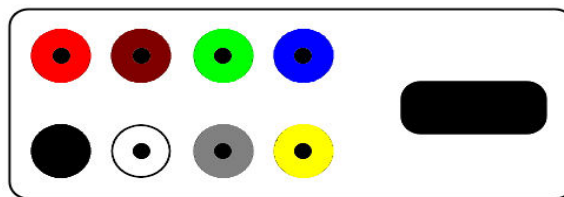
Serial Suite:

Red  
Black

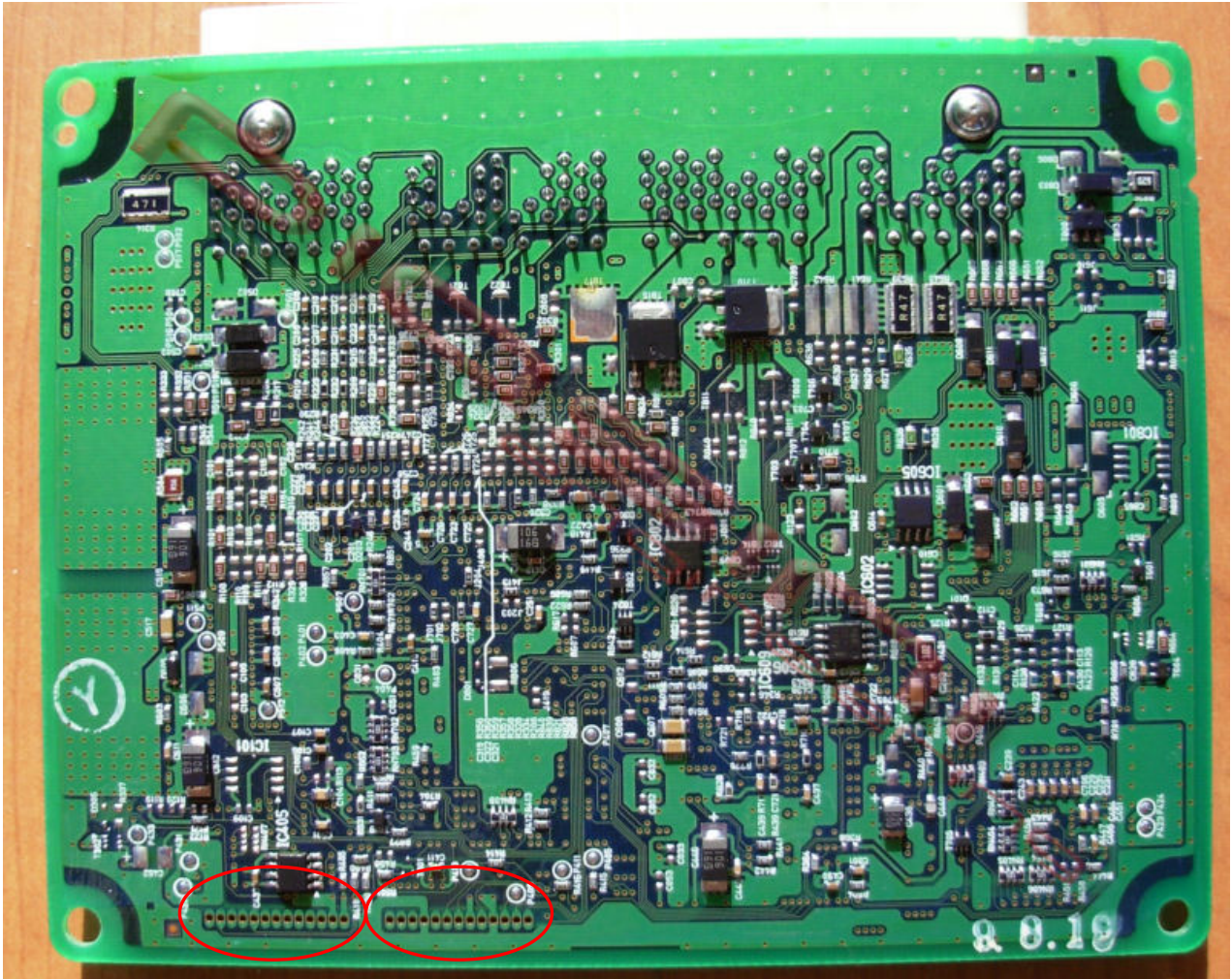
to  
to

ECU Plug:

3 Pins Red (Power Supply +12 Volt)  
1 Pins Black (Ground)

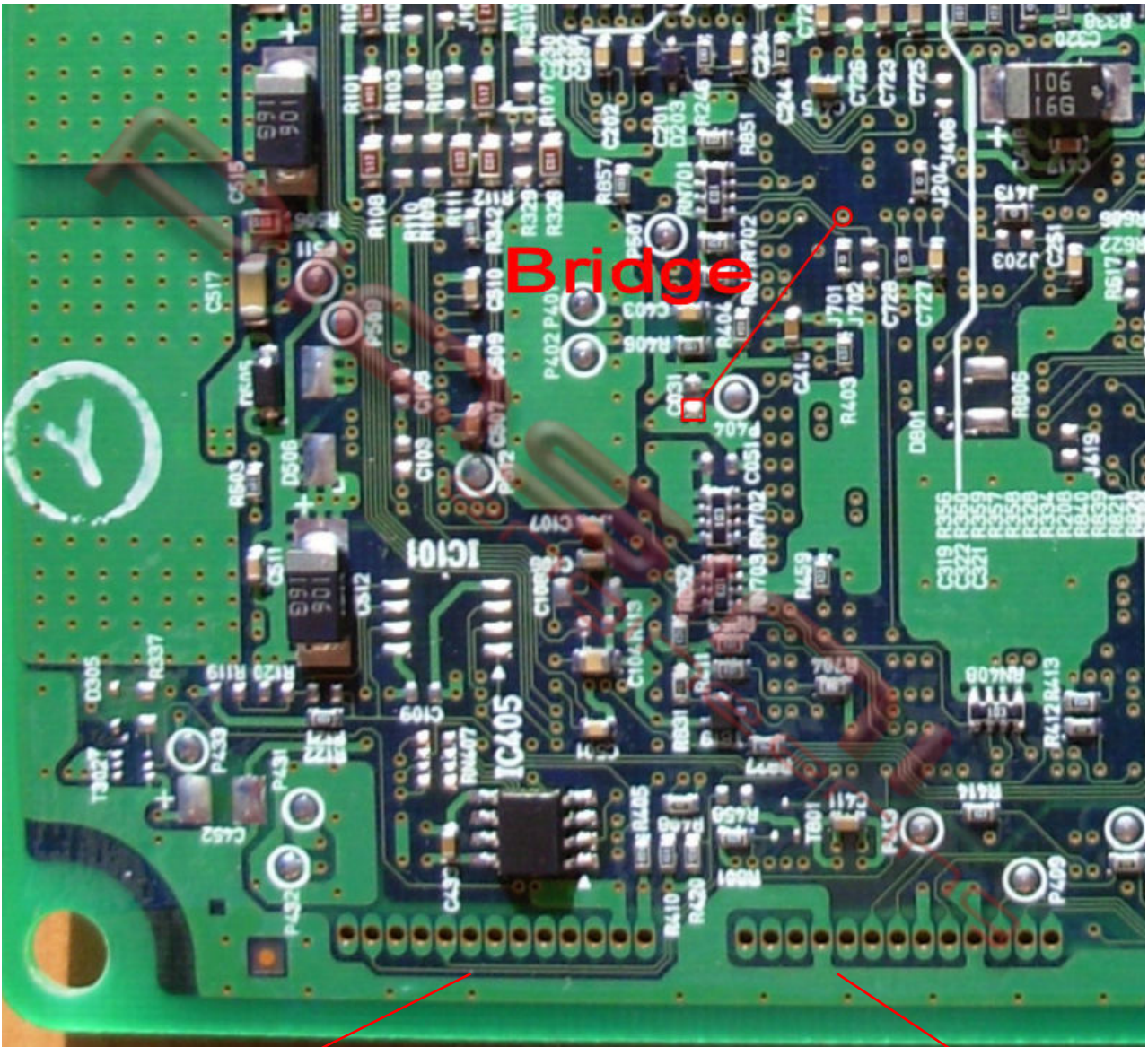


Where to connect the flat cable:





# READ the ECU:



□ 5 □ 10 □ 12 13 14 15 11 3 20 1

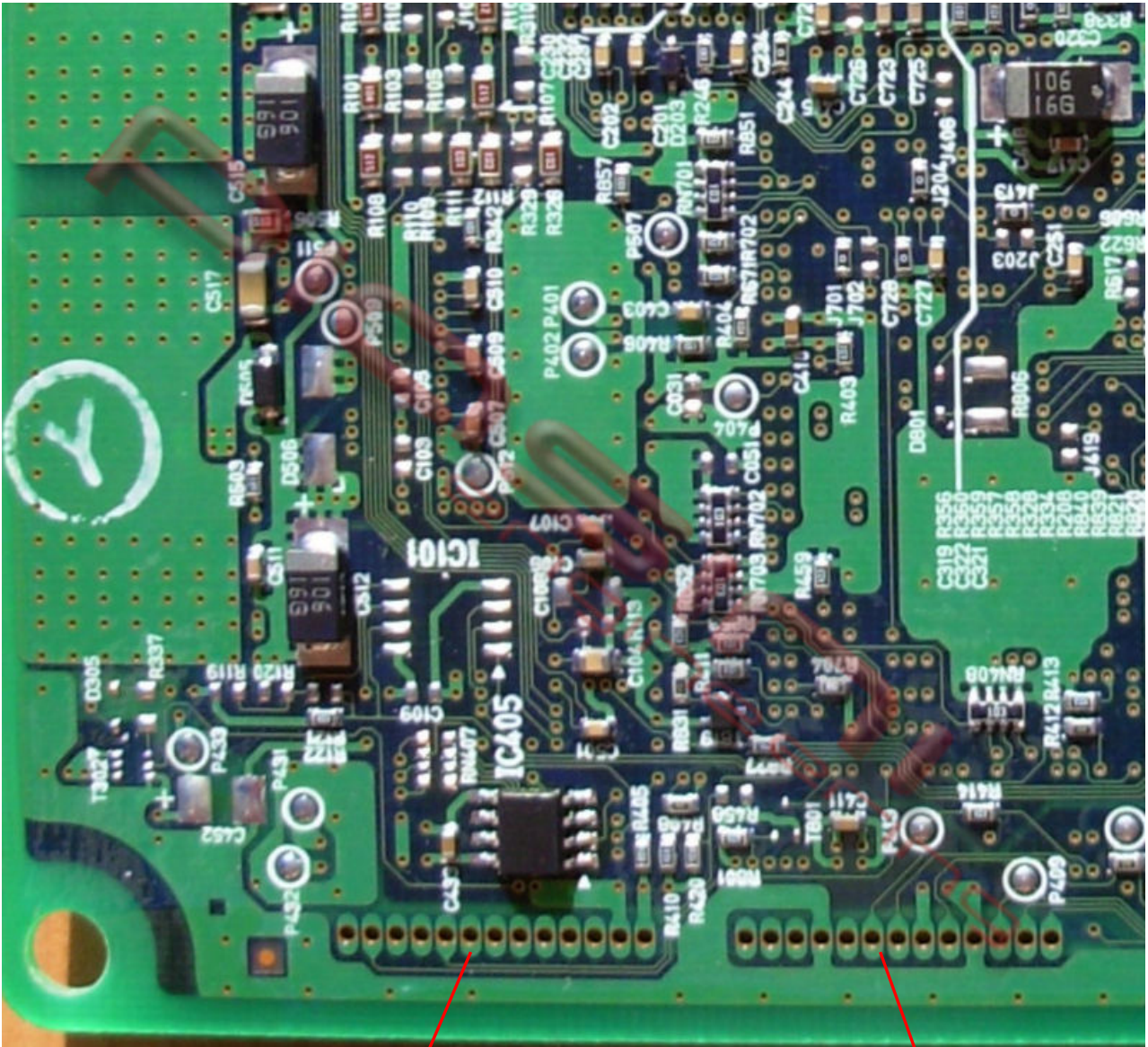
□ □ □ □ □ □ □ □ 19 □ 2 16 □



Put a wire (bridge) like in the picture, then connect the flat cable pin following the number like in picture.



# WRITE the ECU:



You have to **remove the bridge used before**, and put another 2 wire(**Bridge**) like in the picture.

