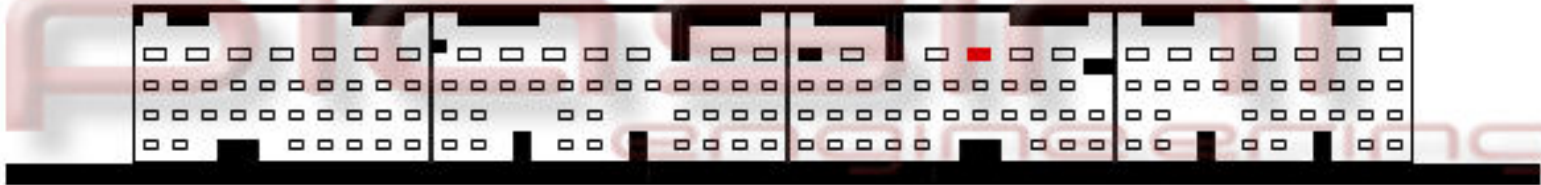


PIASINI

engineering



Connect as below:

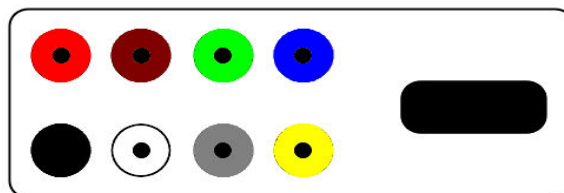
Serial Suite:

ECU Plug:

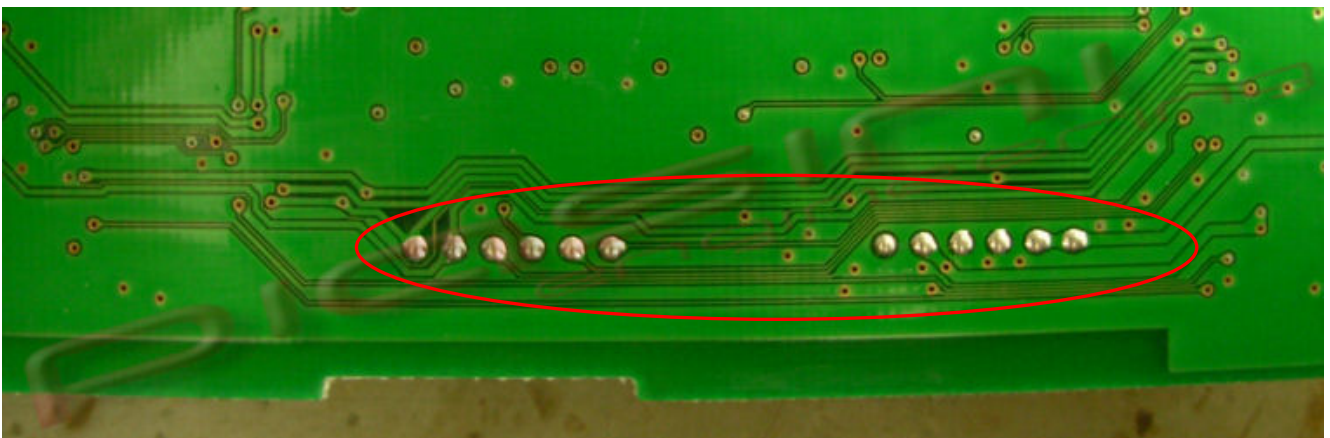
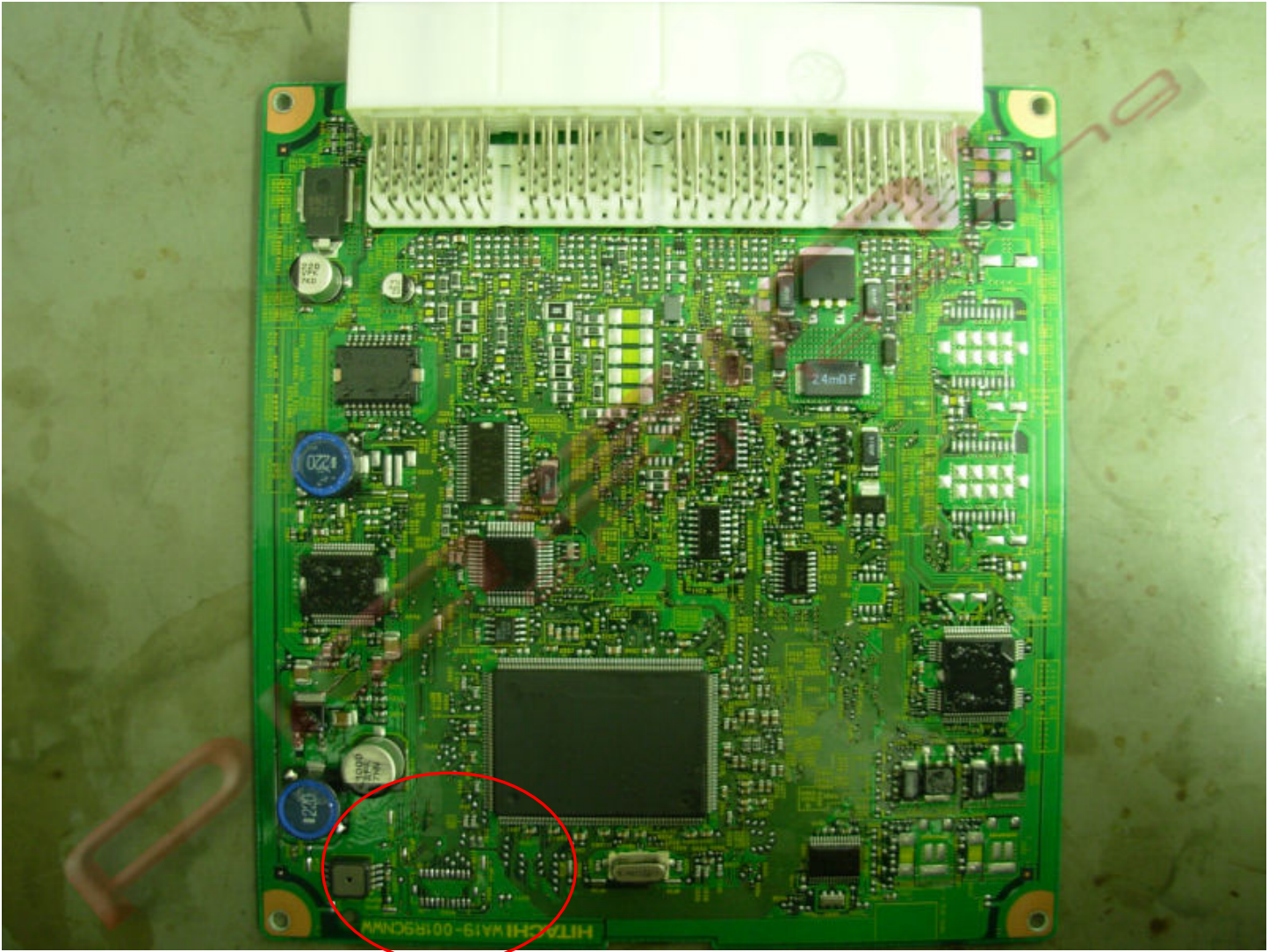
Red
Black

to
to

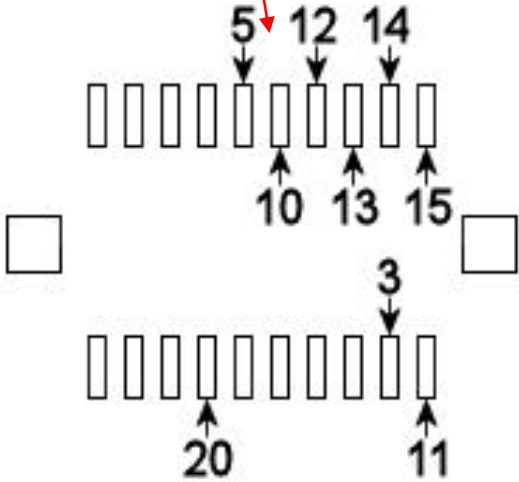
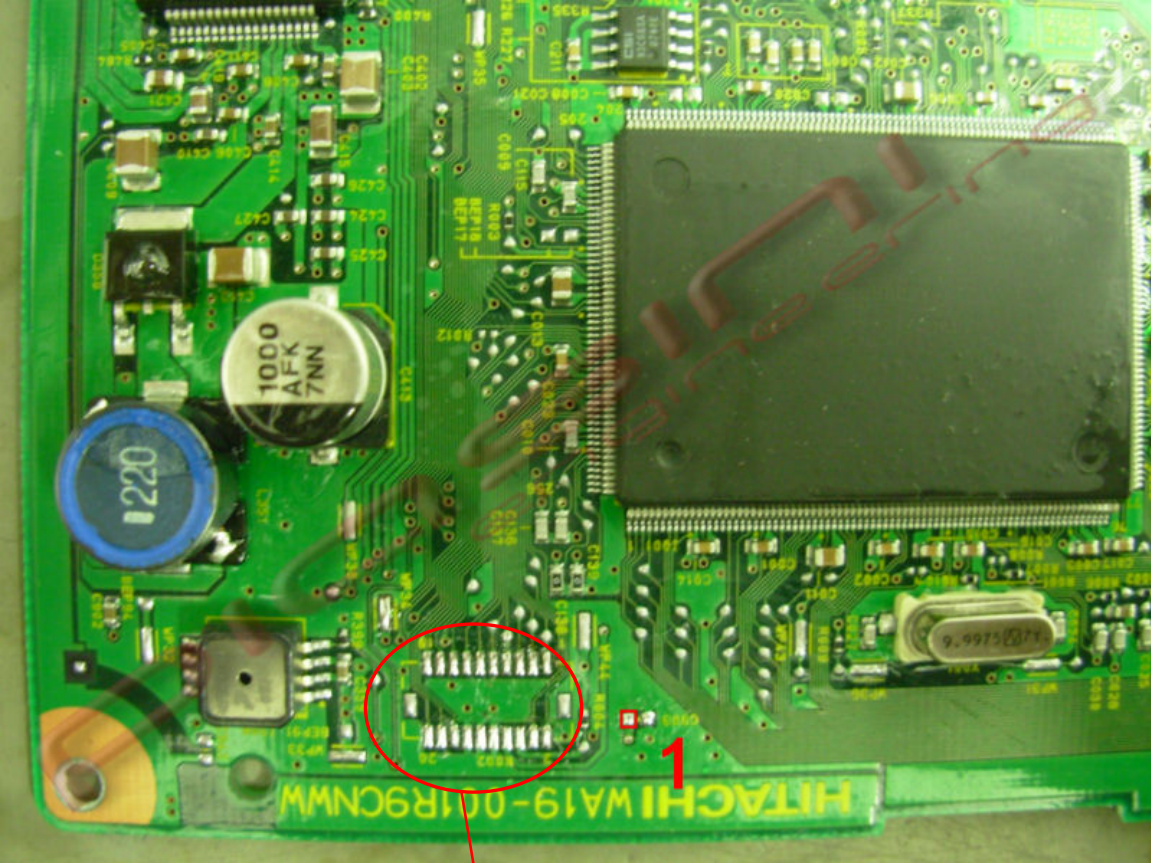
1 Pins Red (Power Supply +12 Volt)
1 Pins Black (Ground)



Where to connect the flat cable:



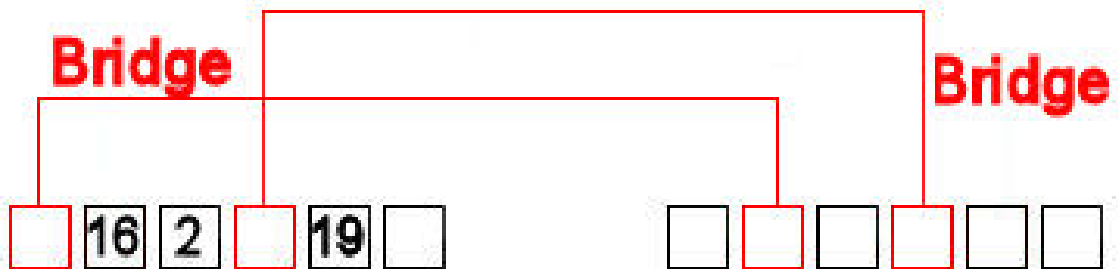
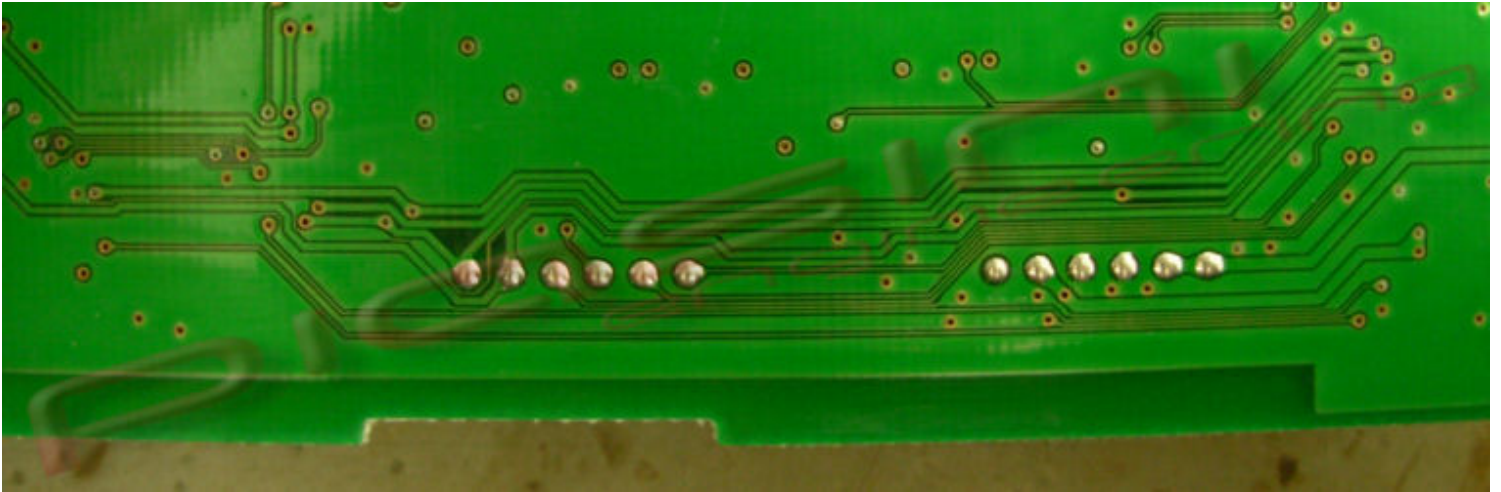
READ the ECU:



Connect the flat cable pin following the number like in picture.



WRITE the ECU:



You have to soldering the flat cable, and put another 2 wire(**Bridge**) like in the picture,
the flat cable connect in the front of ECU is still connect