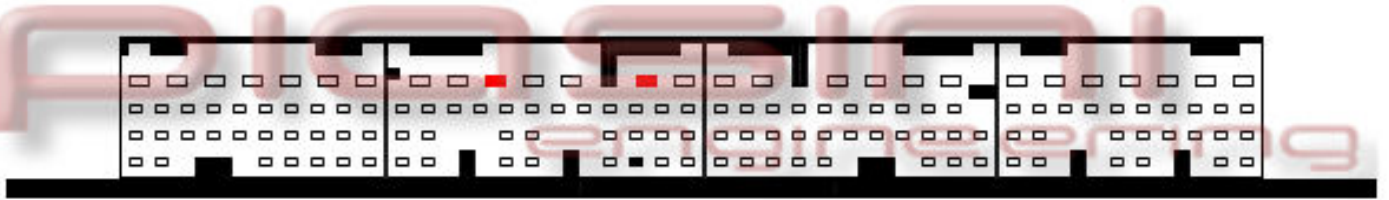


PIASINI

engineering



Connect as below:

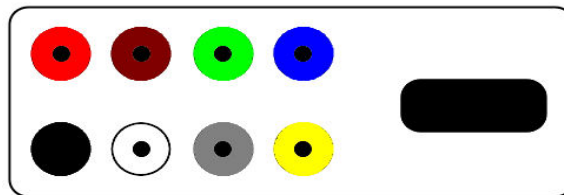
Serial Suite:

Red
Black

to
to

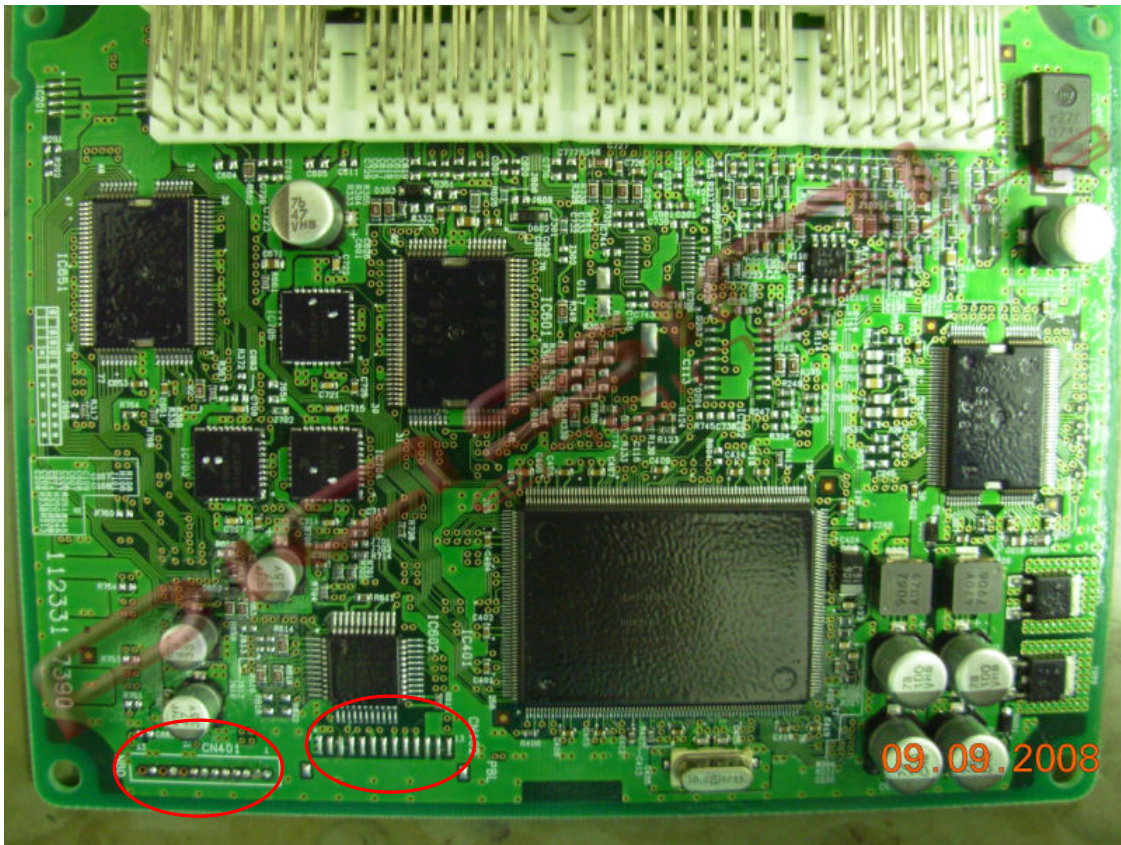
ECU Plug:

2 Pins Red (Power Supply +12 Volt)
1 Pins Black (Ground)

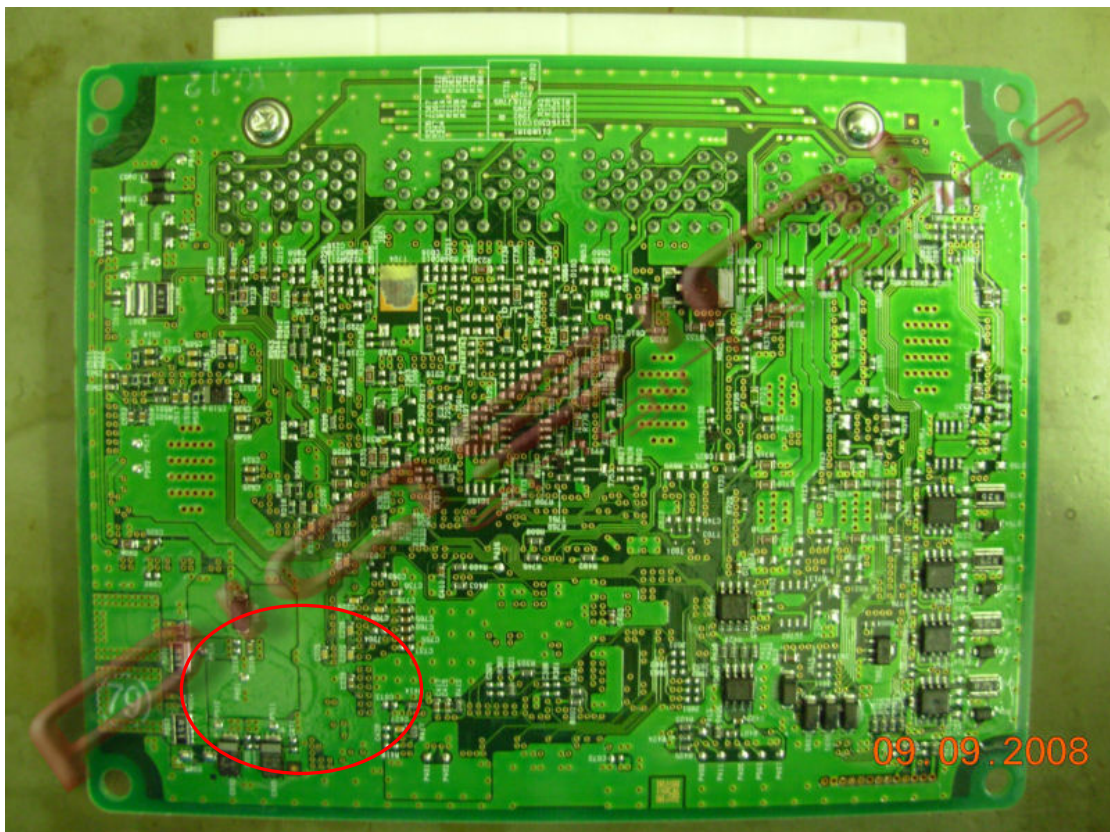


Where to connect the flat cable:

Ecu front:

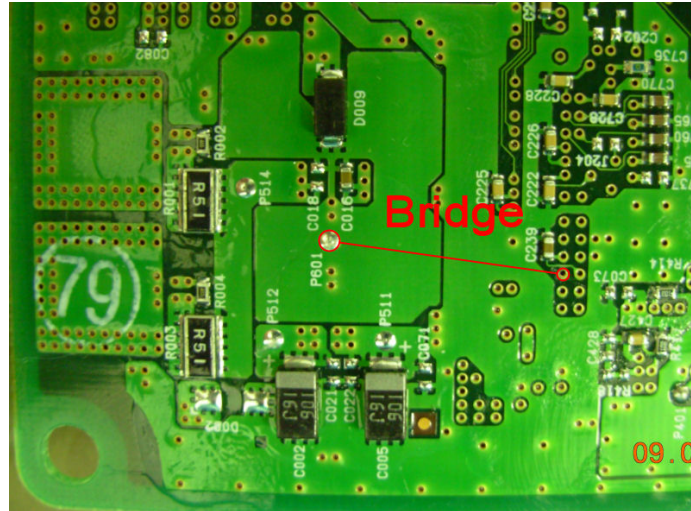


Ecu Back:



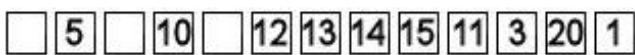
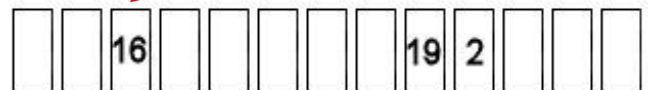
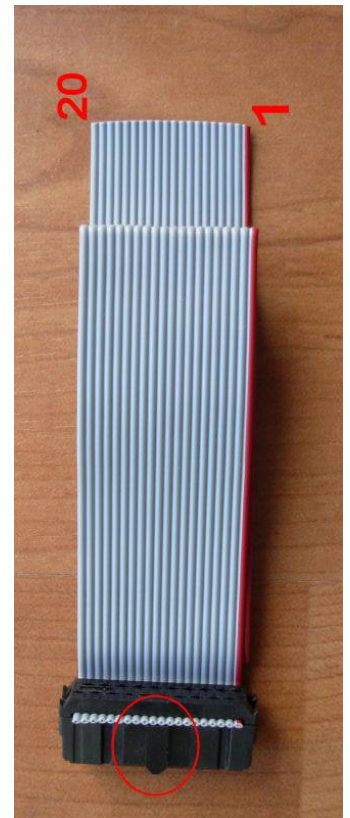
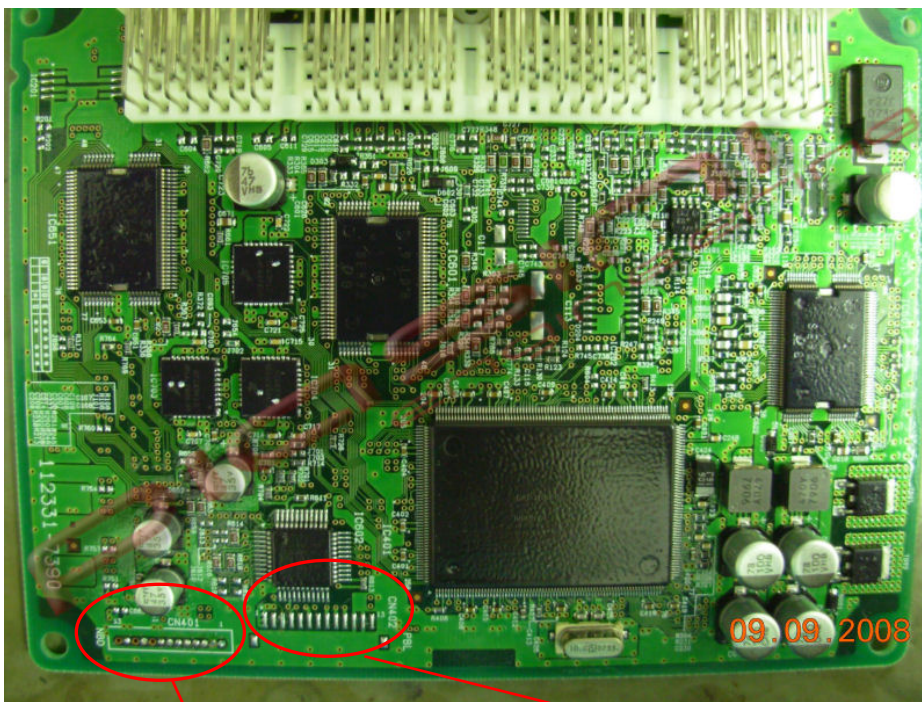
READ the ECU:

Ecu back:



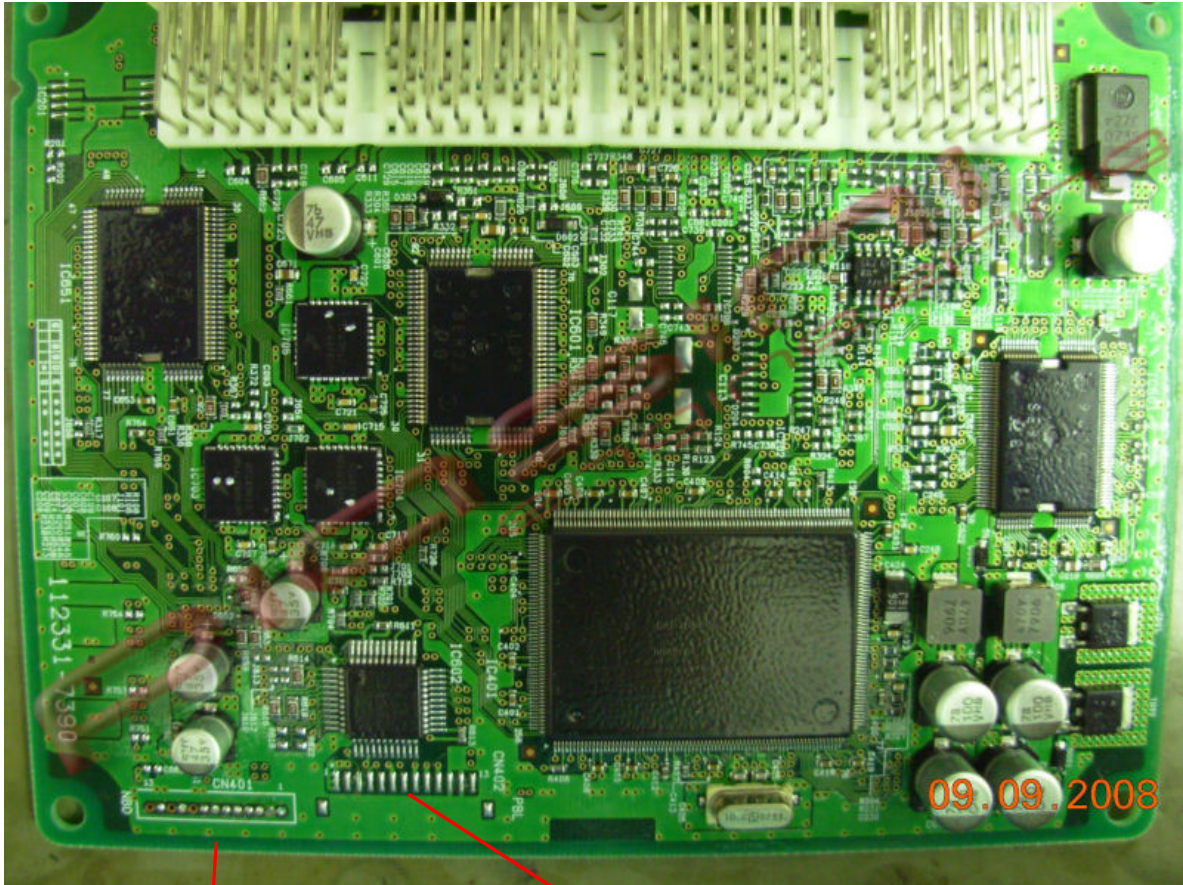
Put a wire (bridge) like in the picture, then turn the ecu in the front side.

Ecu Fornt:



You have connect the flat cable pin following the number like in picture.

WRITE the ECU:



You have to **remove the bridge used before**, and put another 2 wire(**Bridge**) like in the picture.

