

PIASINI

engineering



Connect as below:

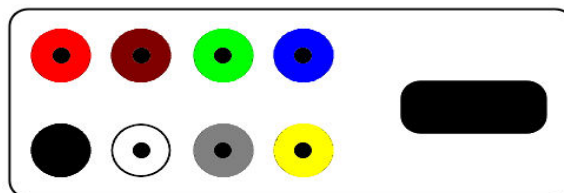
Serial Suite:

ECU Plug:

Red
Black

to
to

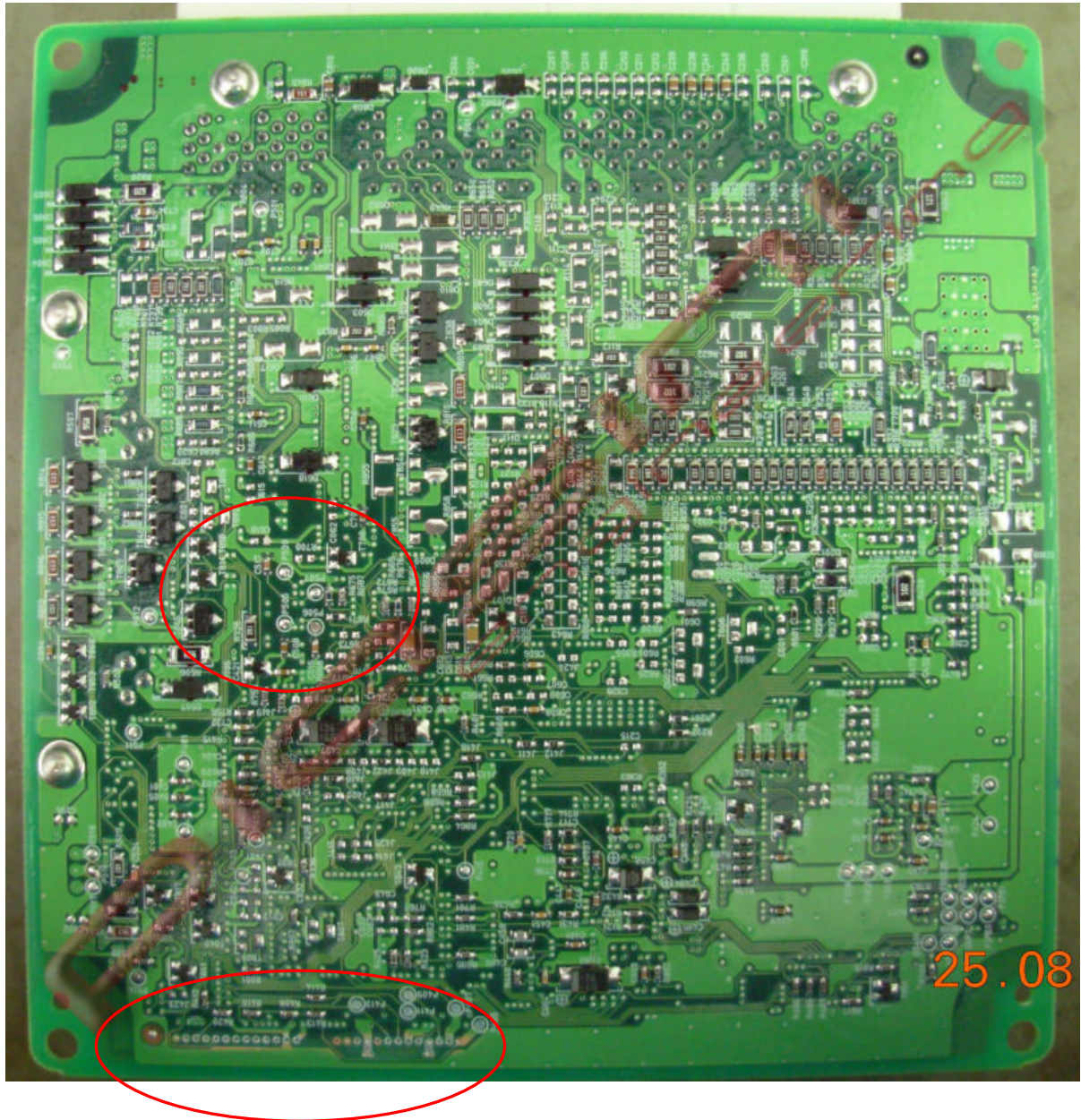
2 Pins Red (Power Supply +12 Volt)
1 Pins Black (Ground)



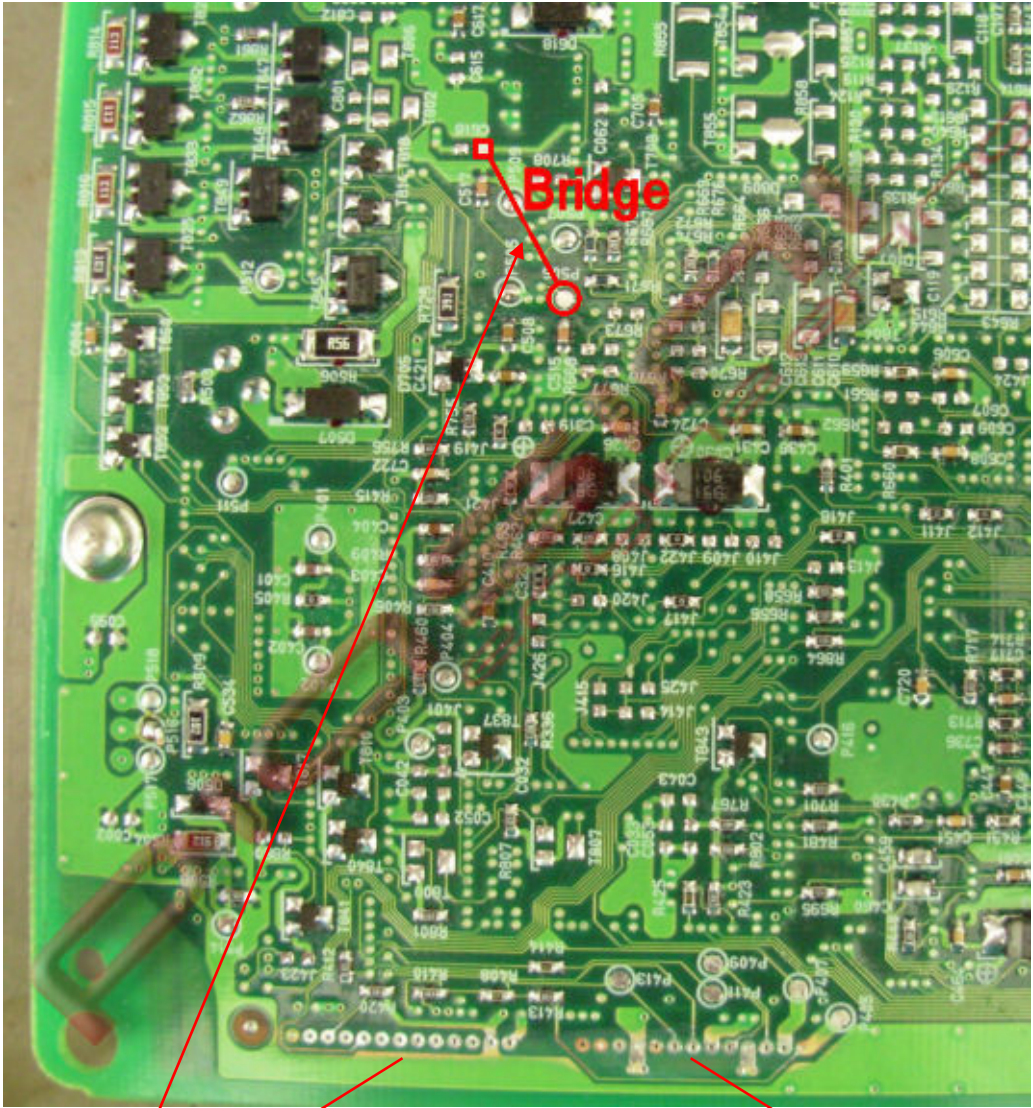
ATTENTION:

Before do anything check the type of MCU
if
SH7055
or
SH7058

Where to connect the flat cable:



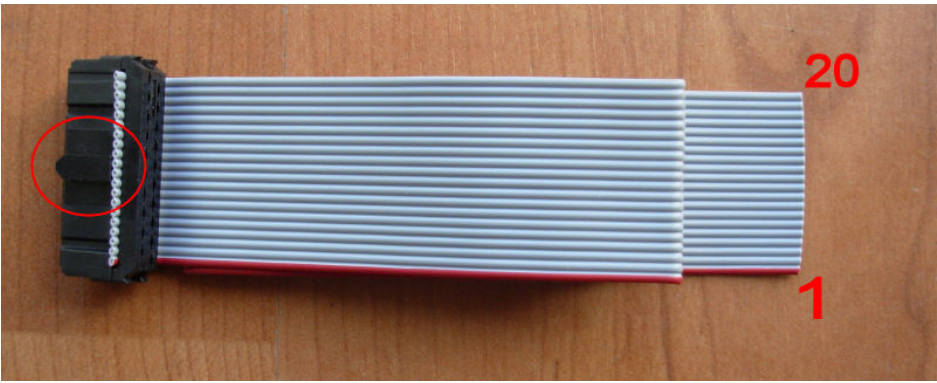
READ the ECU:



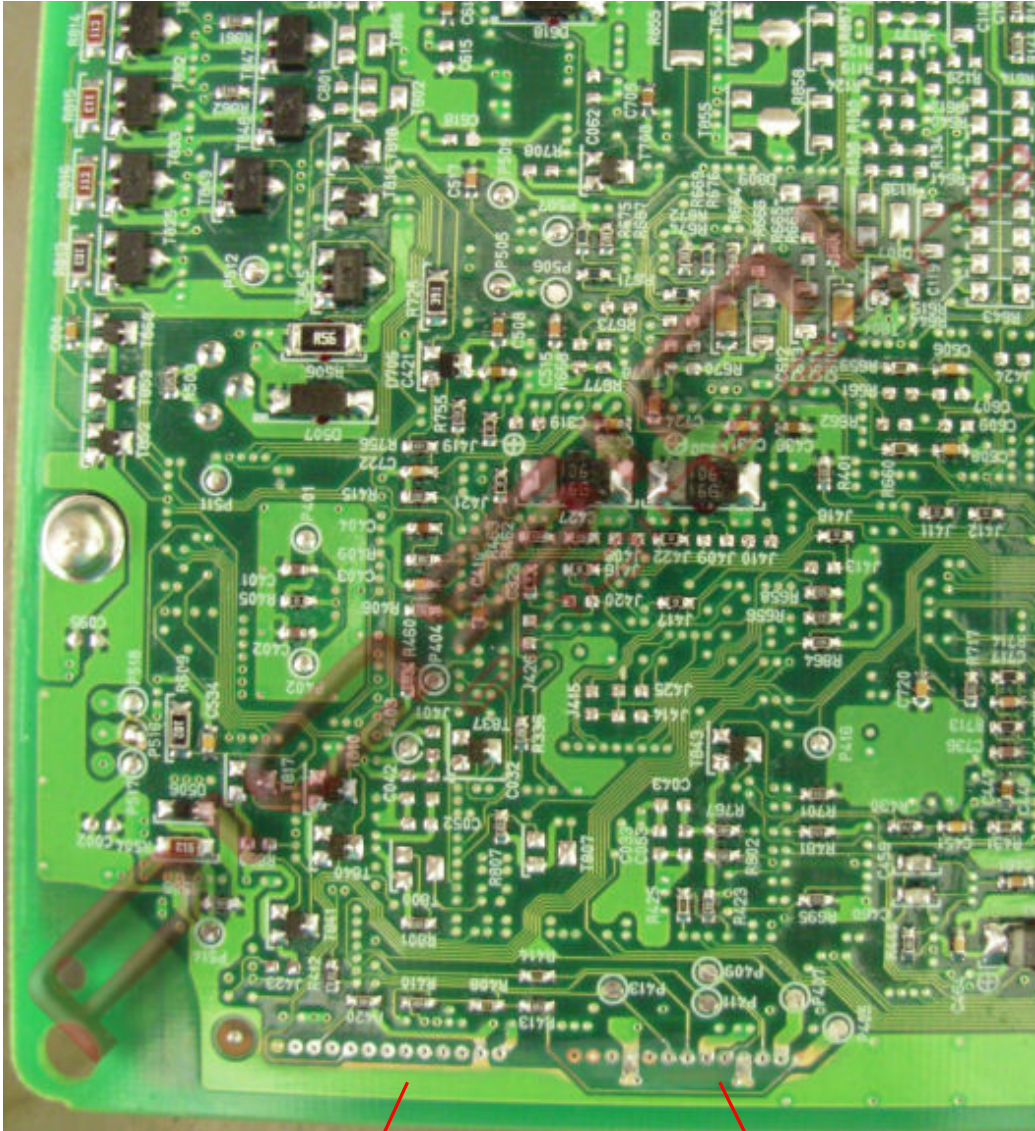
5 10 12 13 14 15 11 3 20 1

19 2 16

Put a wire (bridge) like in the picture, then connect the flat cable pin following the number like in picture.



WRITE the ECU:



You have to **remove the bridge used before**, and put another 2 wire(**Bridge**) like in the picture.

