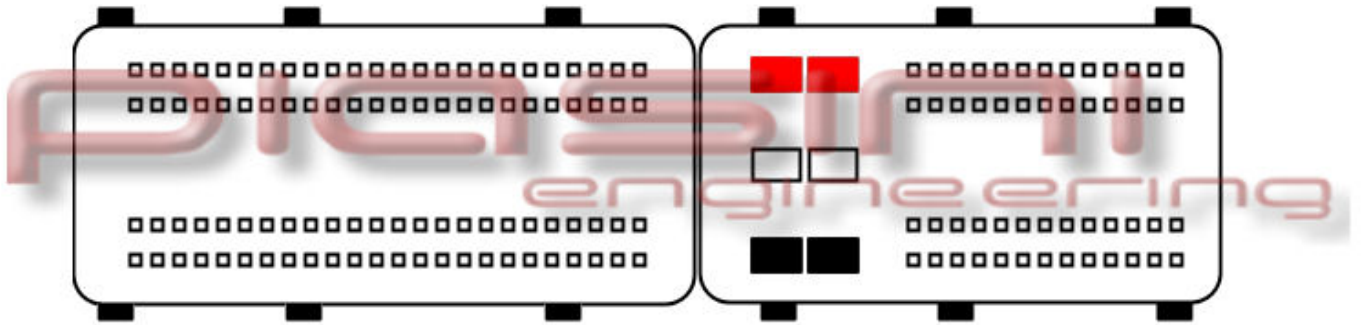




## ECU : Opel Astra 1.7 cdti 125cv

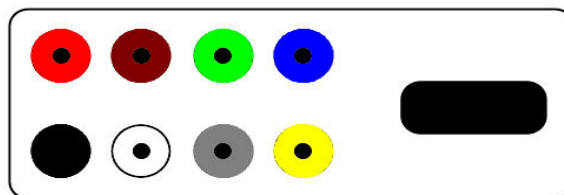


Connect as below:

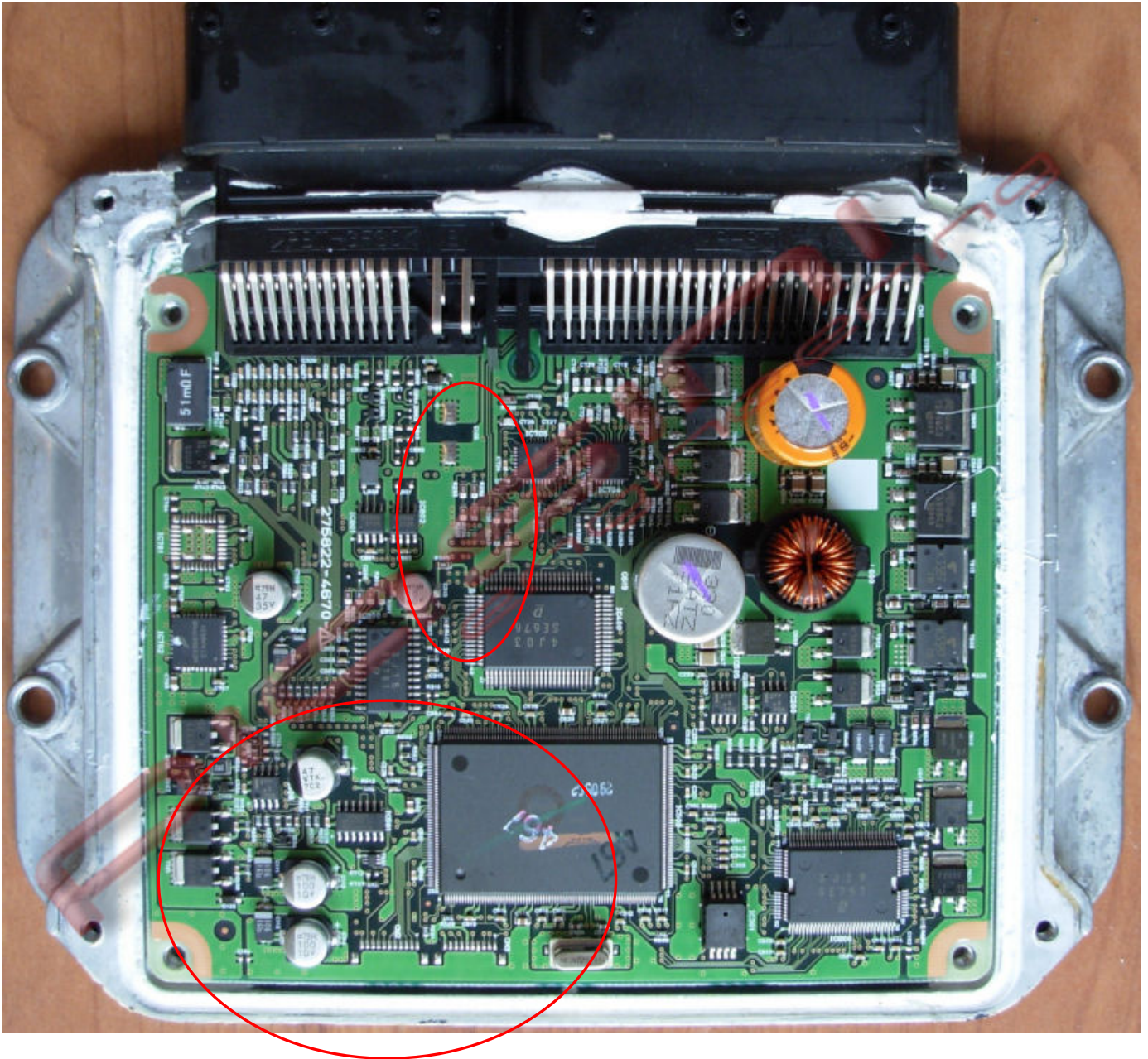
Serial Suite:

ECU Plug:

Red	to	2 Pins Red	(Power Supply +12 Volt)
Black	to	2 Pins Black	(Ground)



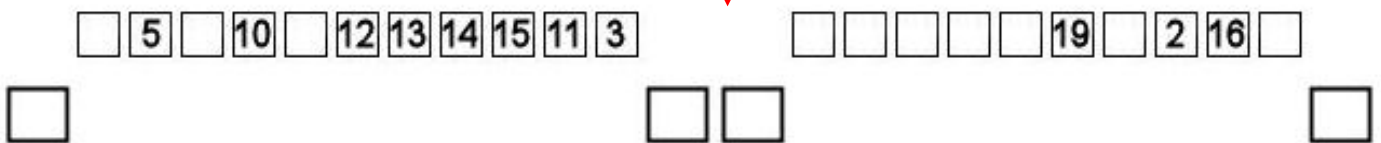
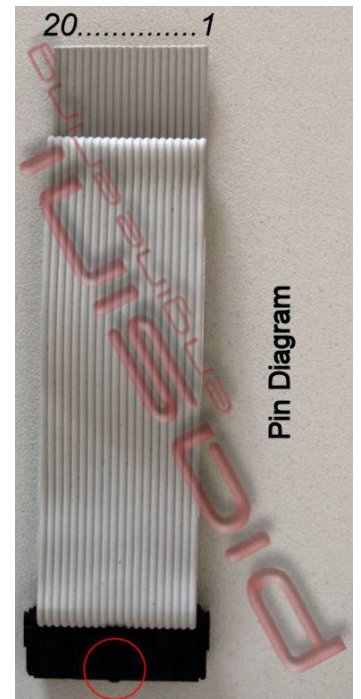
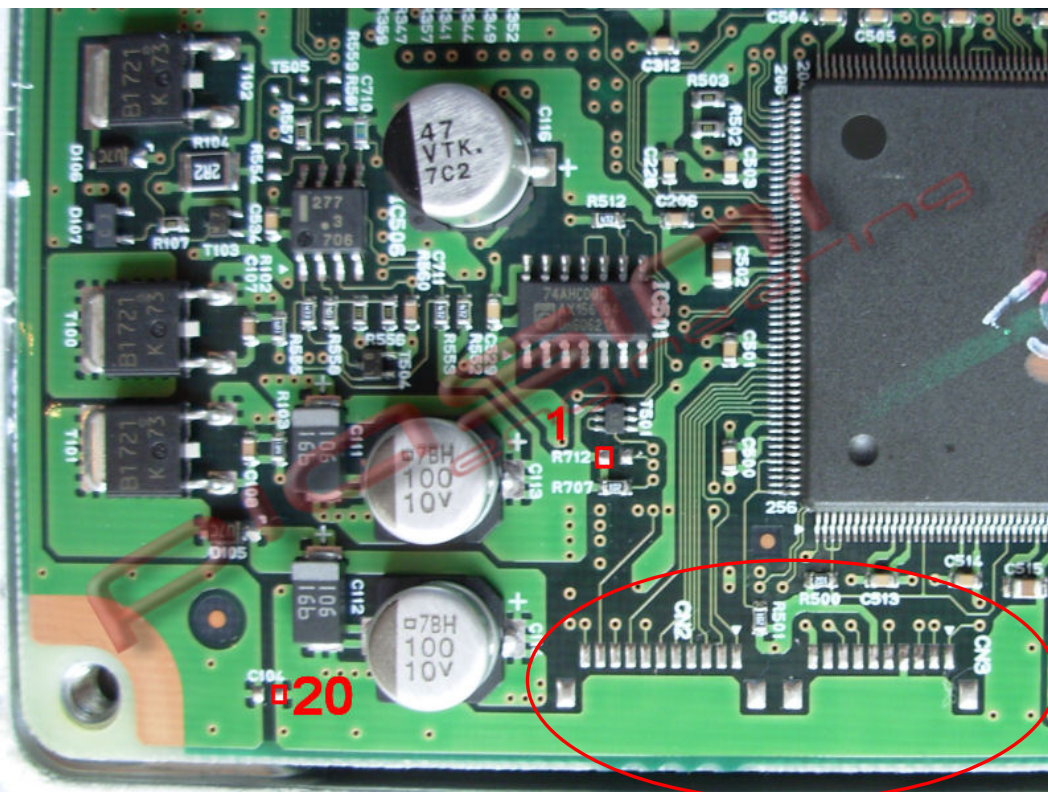
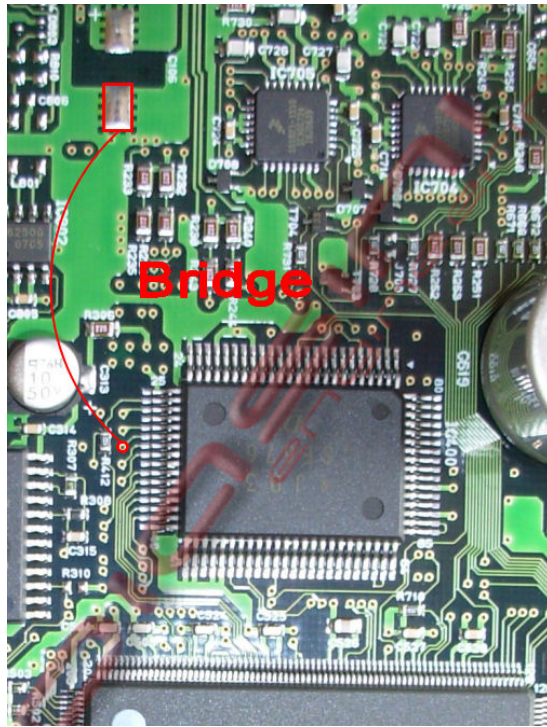
Where to connect the flat cable:





# READ the ECU:

Picture 1



1. You have to put 1 wire (bridge) like in the picture (picture 1).
2. Connet the flat cable following the number in the picture;

# WRITE the ECU:

You have to **remove 1 bridge used before** (picture 1), put other 2 wire(bridge) like in the picture, the **flat cable is still connect**.

