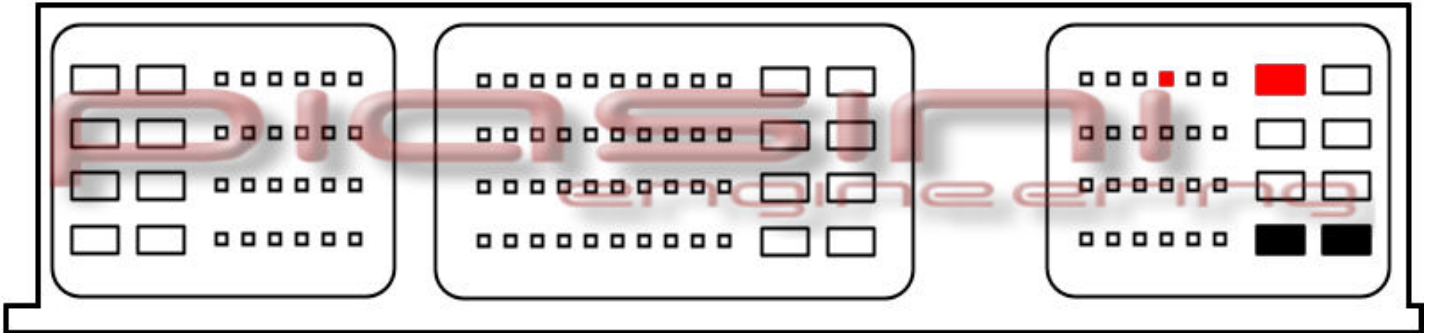




ECU : Ecu Hitachi Short 3 Plug VAR1

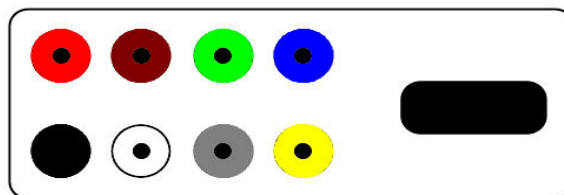


Connect as below:

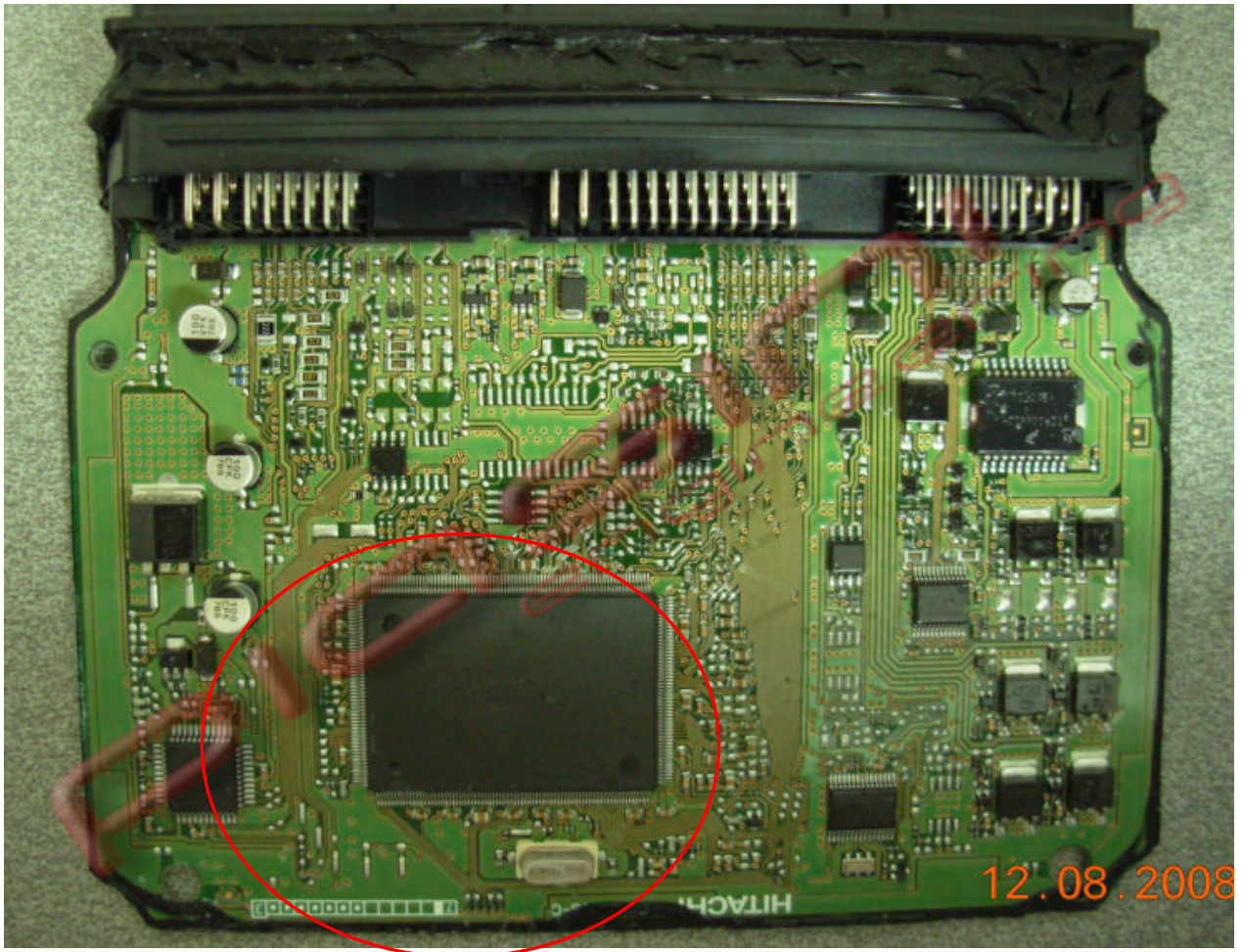
Serial Suite:

ECU Plug:

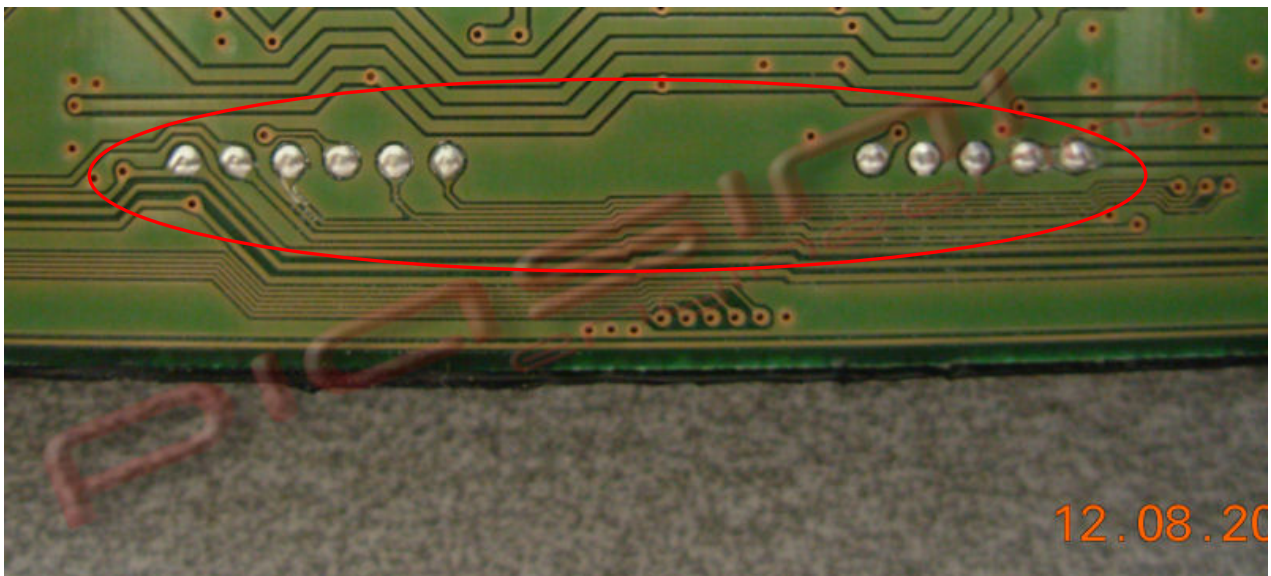
Red to 2 Pins Red (Power Supply +12 Volt)
 Black to 2 Pins Black (Ground)



Where to connect the flat cable:

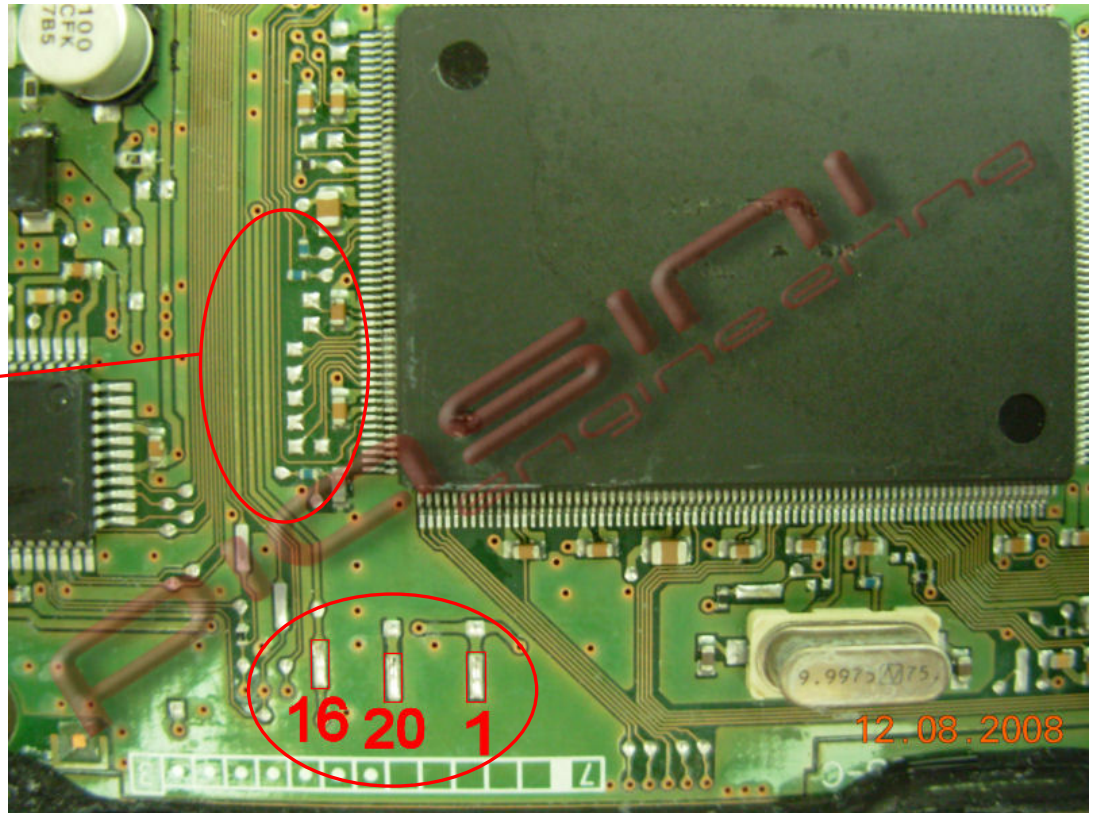


Backside:

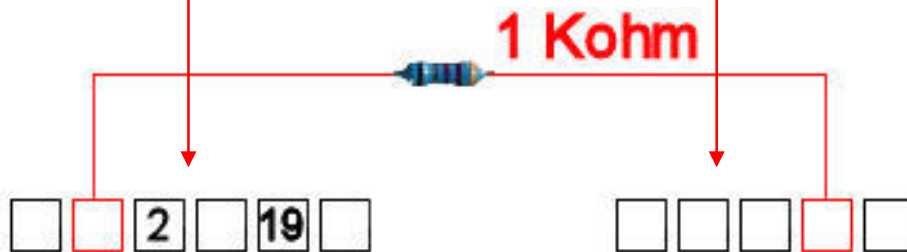
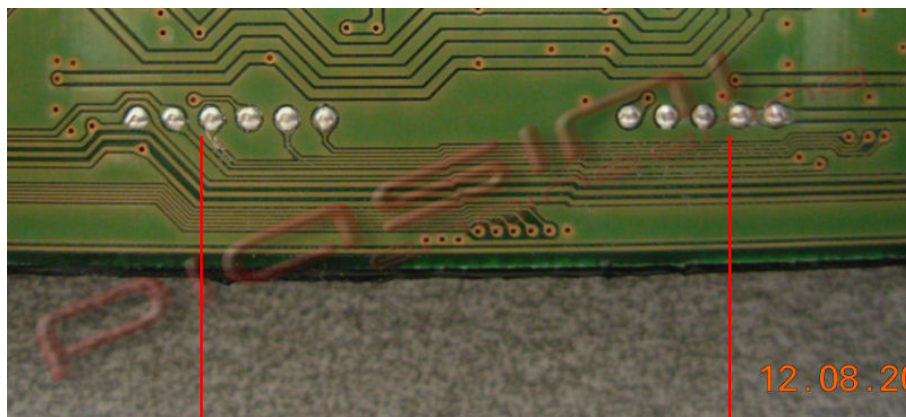


READ the ECU:

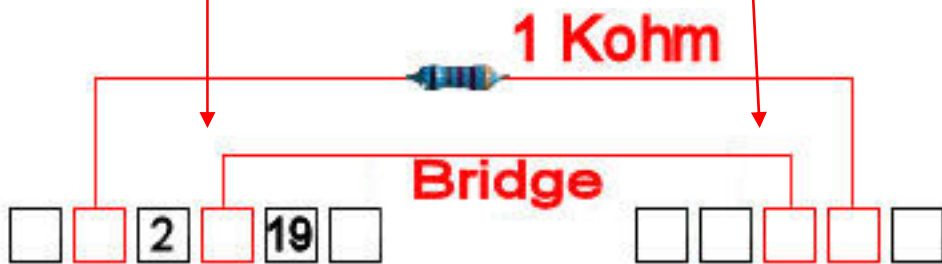
- 5
- 10
- 12
- 13
- 14
- 15
- 3 11



Backside:



WRITE the ECU:



For write the ECU put 1 wire(Bridge) like in the picture.