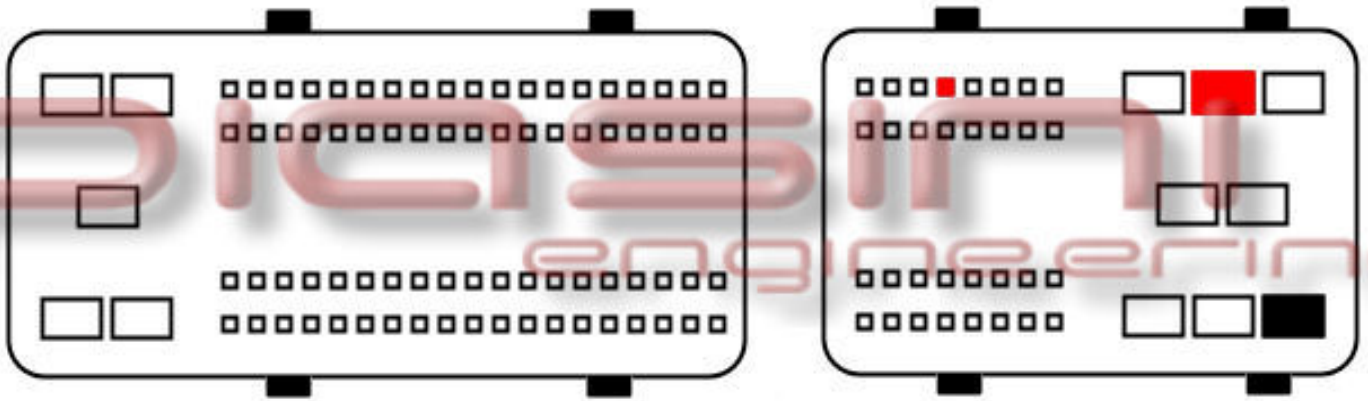


PIASINI engineering



Connect as below:

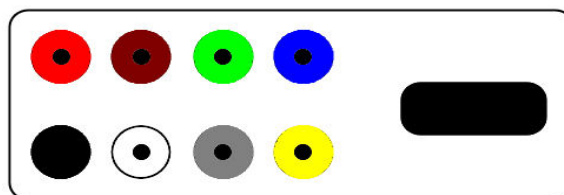
Serial Suite:

ECU Plug:

Red
Black

to
to

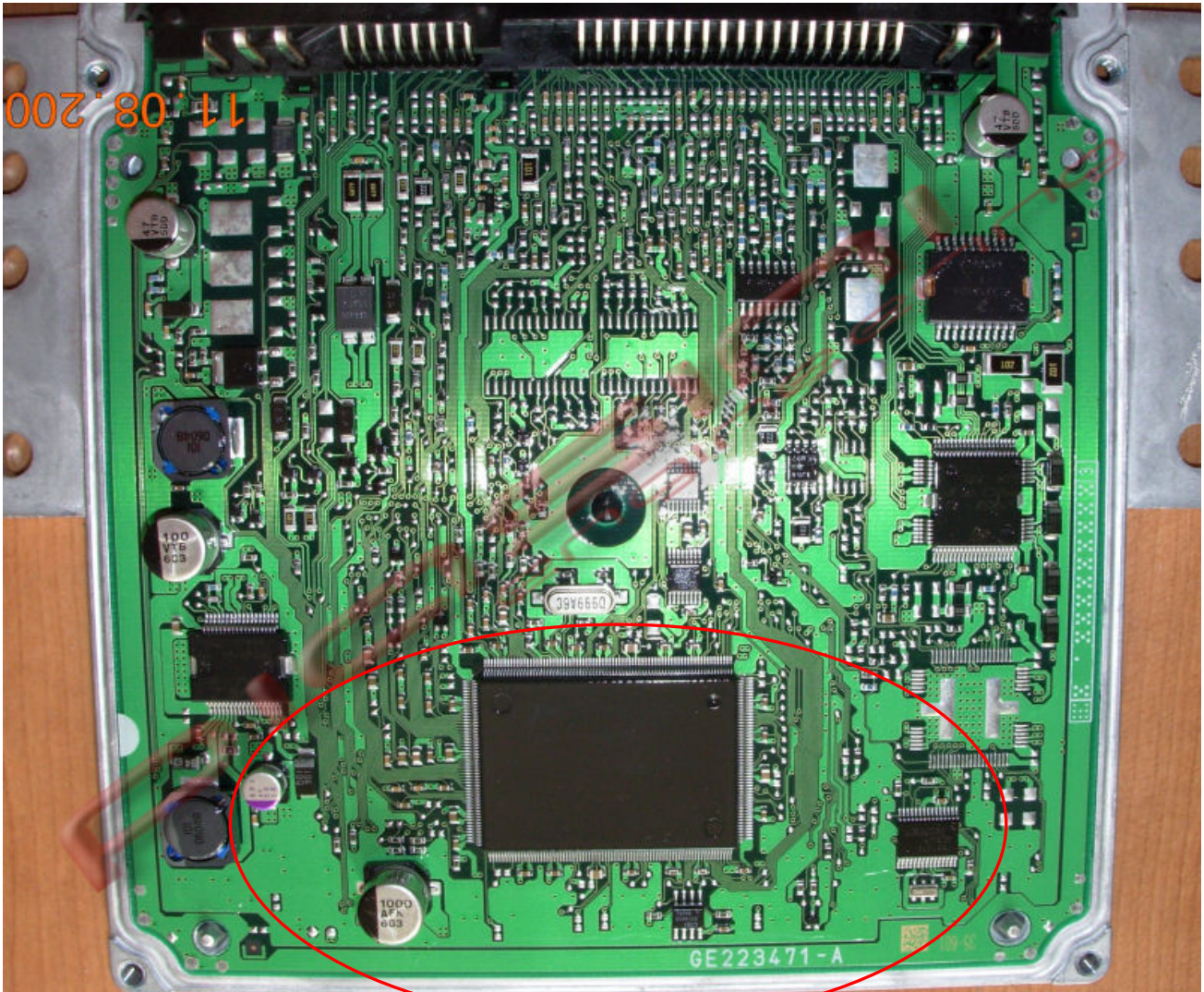
2 Pins Red (Power Supply +12 Volt)
1 Pins Black (Ground)



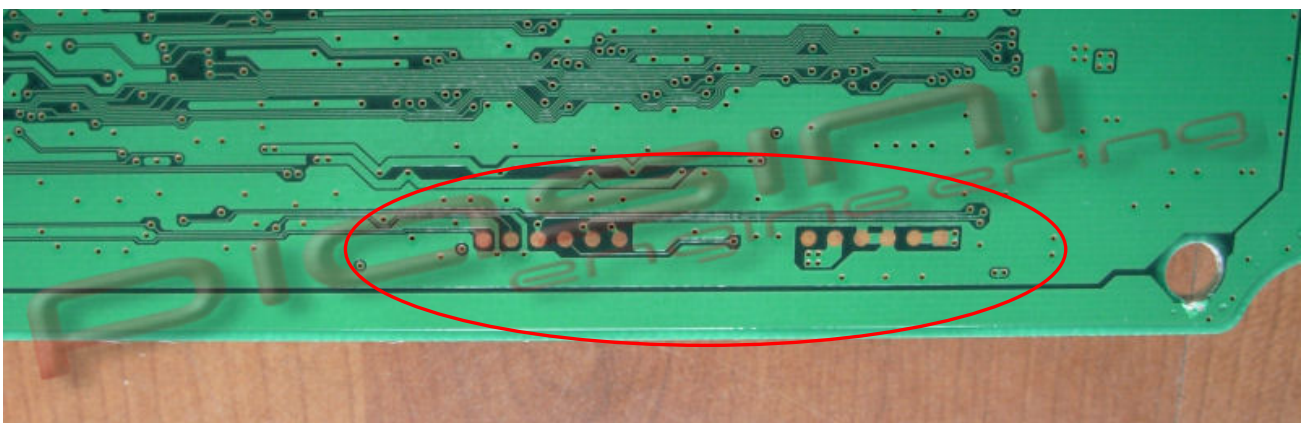
ATTENTION:

Before do anything check the type of MCU
if
SH7055
or
SH7058

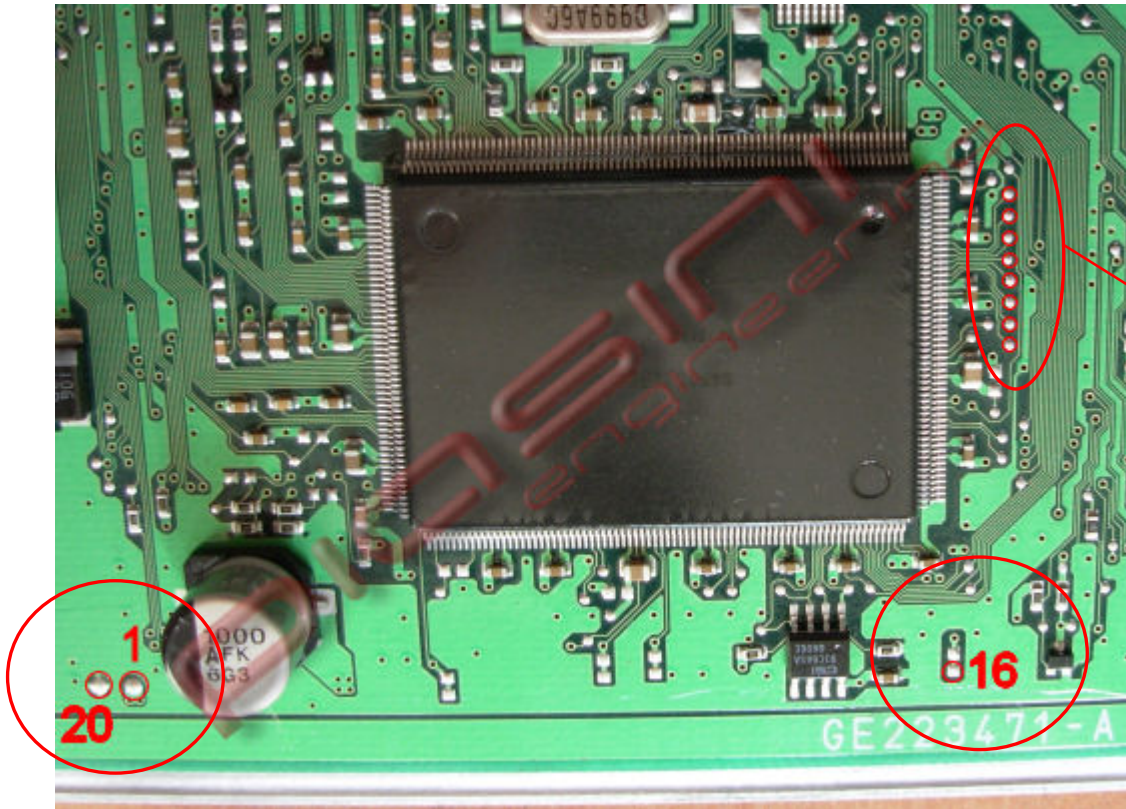
Where to connect the flat cable:



Backside:

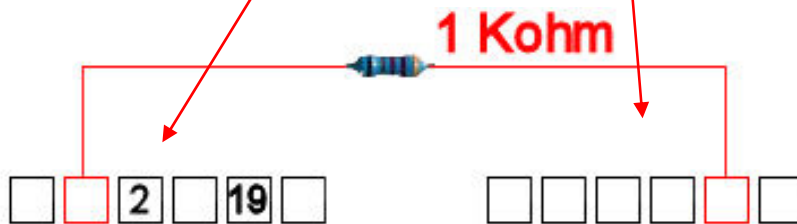
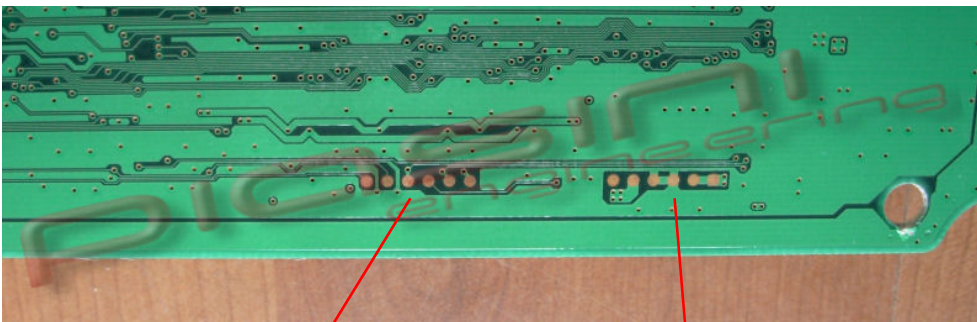


READ the ECU:

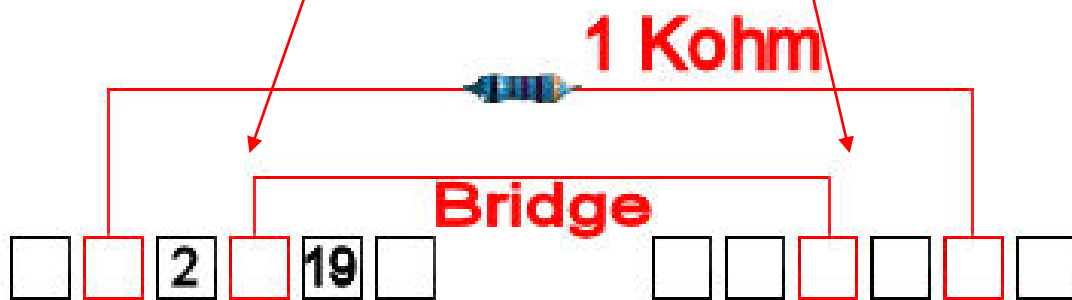
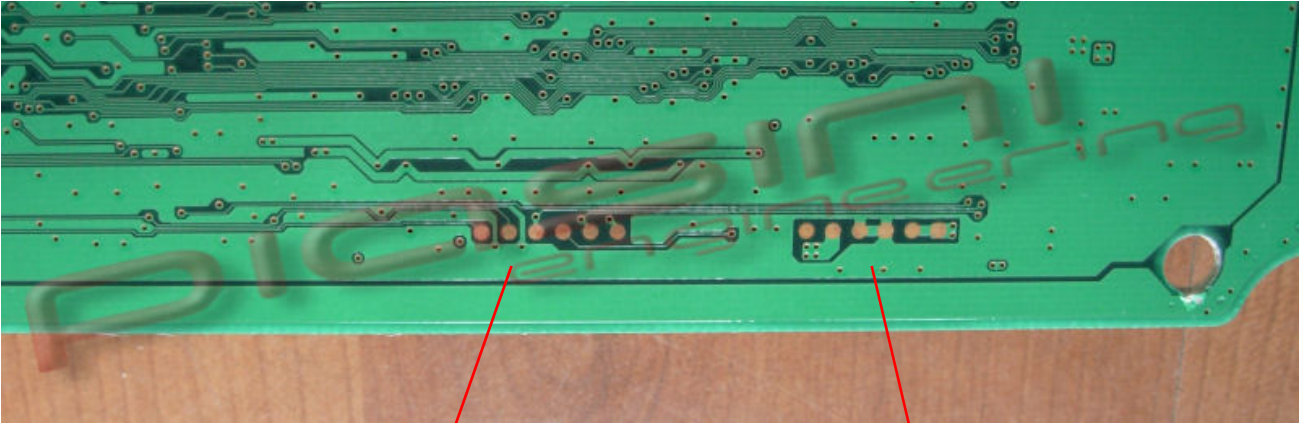


-
- 11
- 3
- 15
- 14
- 13
- 12
- 10
- 5

Backside:



WRITE the ECU:



For write the ECU put 1 wire(Bridge) like in the picture.