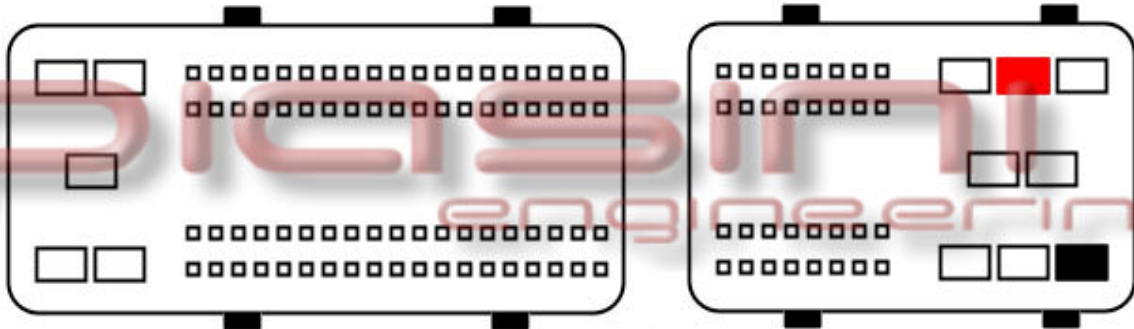




## ECU : Nissan Micra



Connect as below:

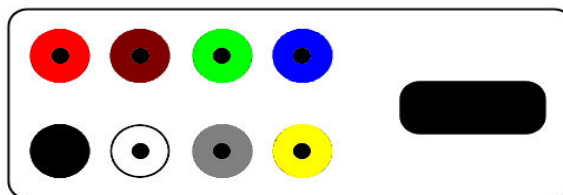
Serial Suite:

ECU Plug:

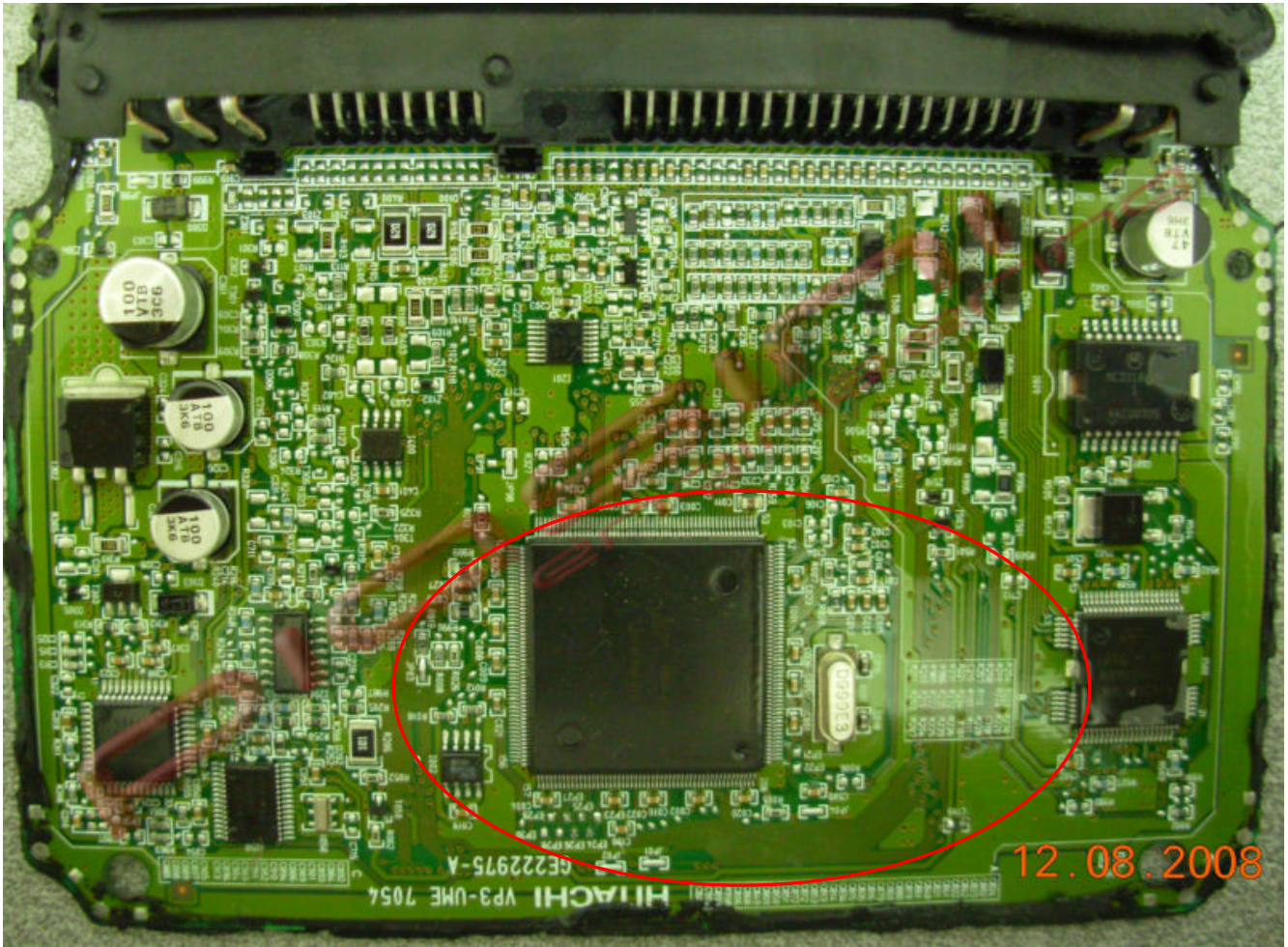
Red  
Black

to  
to

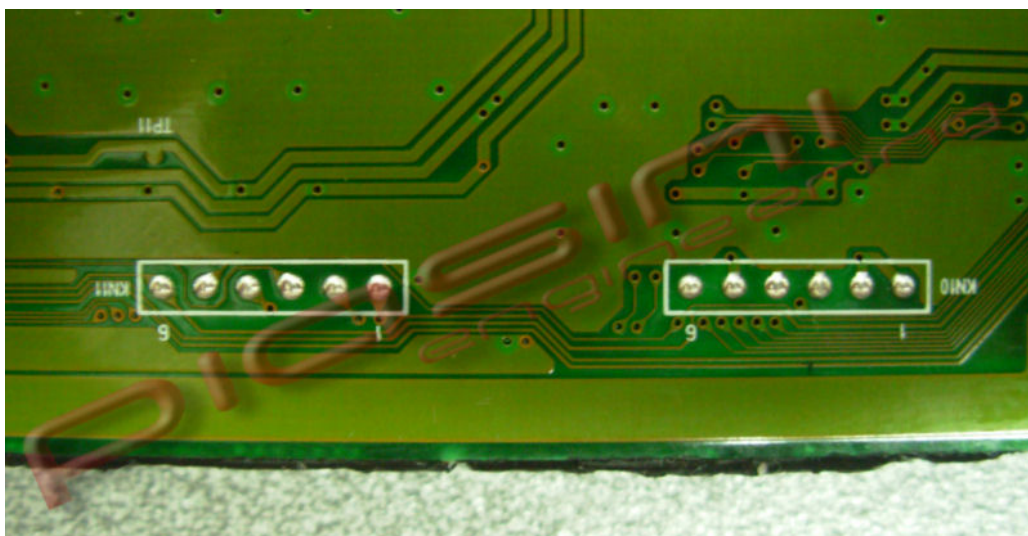
1 Pins Red (Power Supply +12 Volt)  
1 Pins Black (Ground)



Where to connect the flat cable:

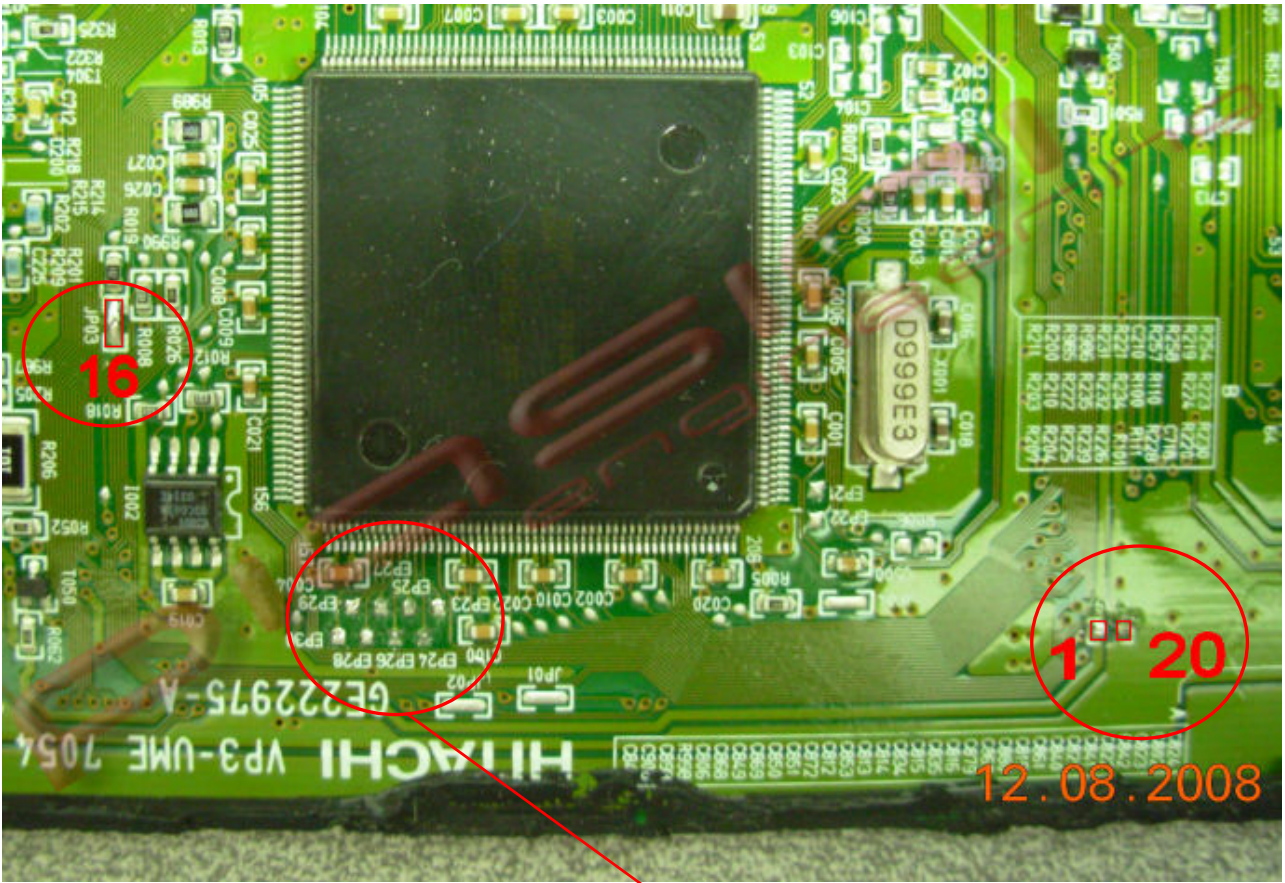


Backside:





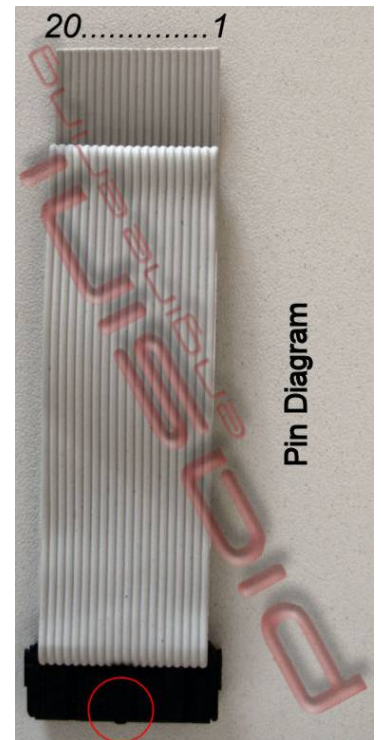
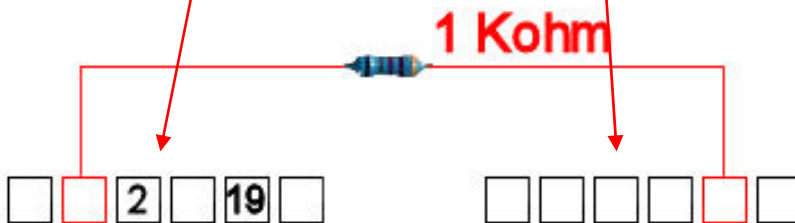
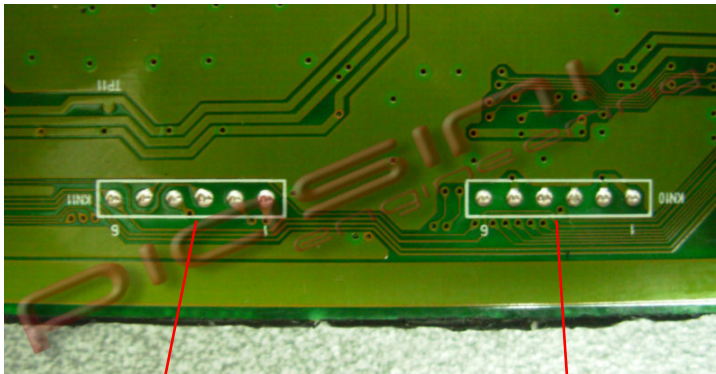
# READ the ECU:



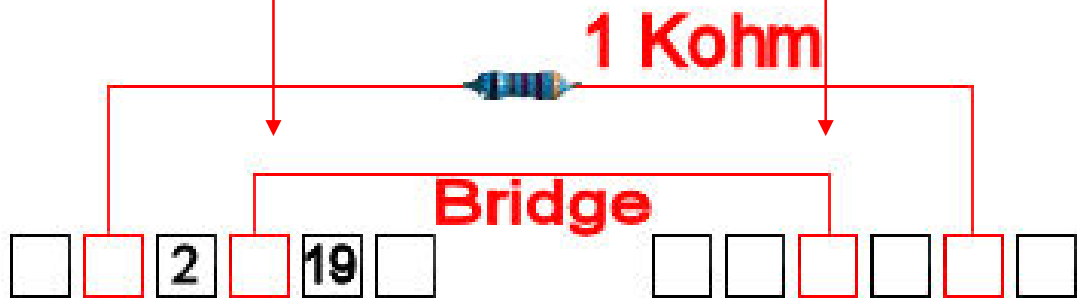
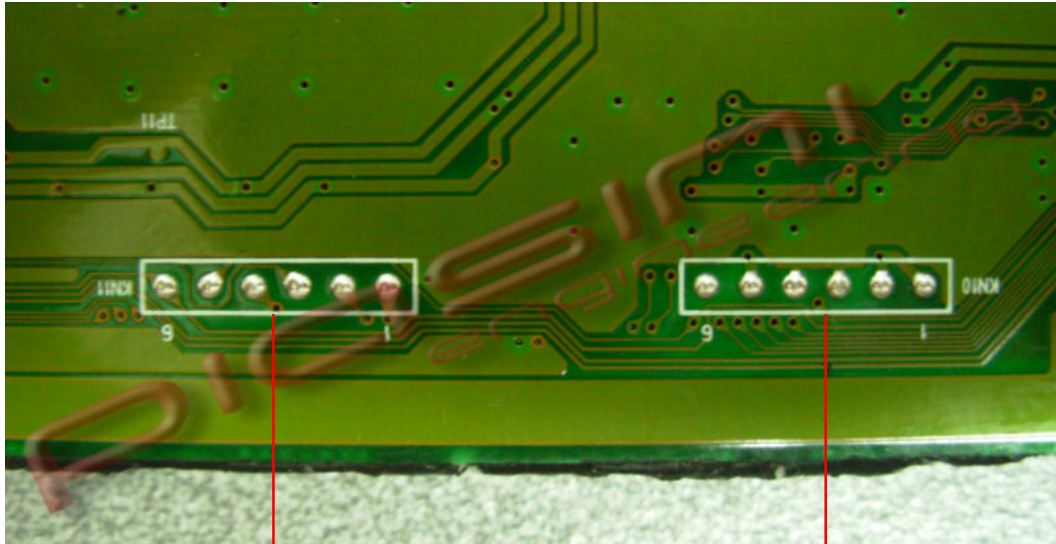
10 13 15 11

5 12 14 3

## Backside:



WRITE the ECU:



For write the ECU put 1 wire(Bridge) like in the picture.