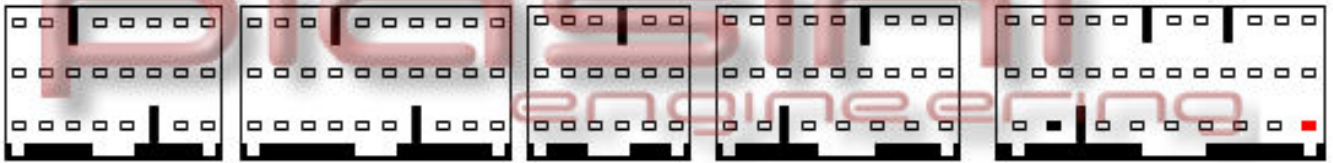




ECU : Mazda RX8



Connect as below:

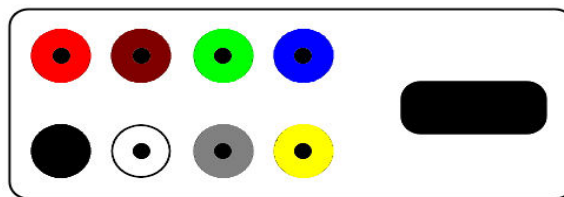
Serial Suite:

ECU Plug:

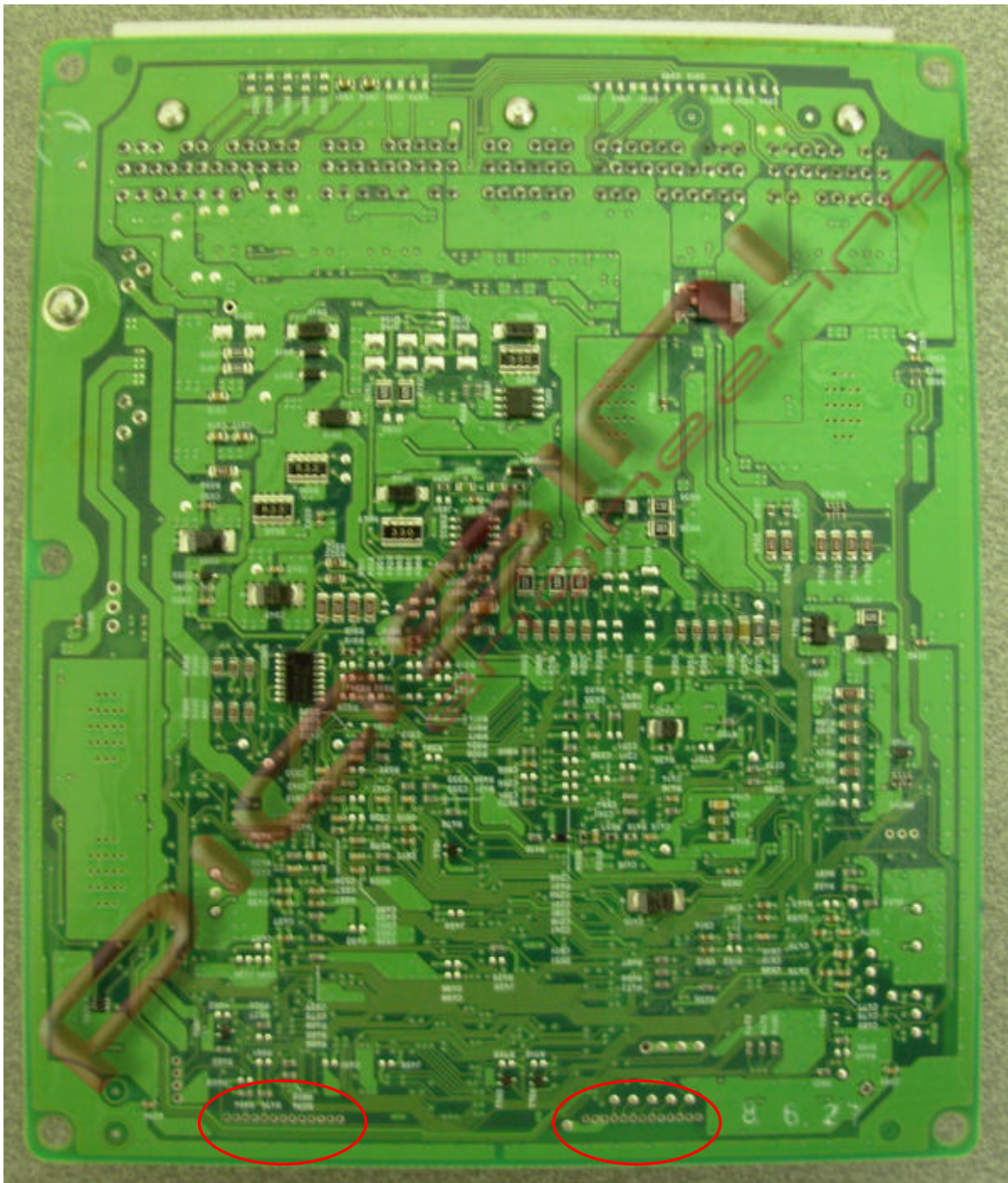
Red
Black

to
to

1 Pins Red (Power Supply +12 Volt)
1 Pins Black (Ground)

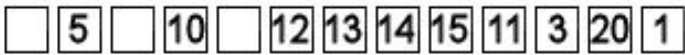
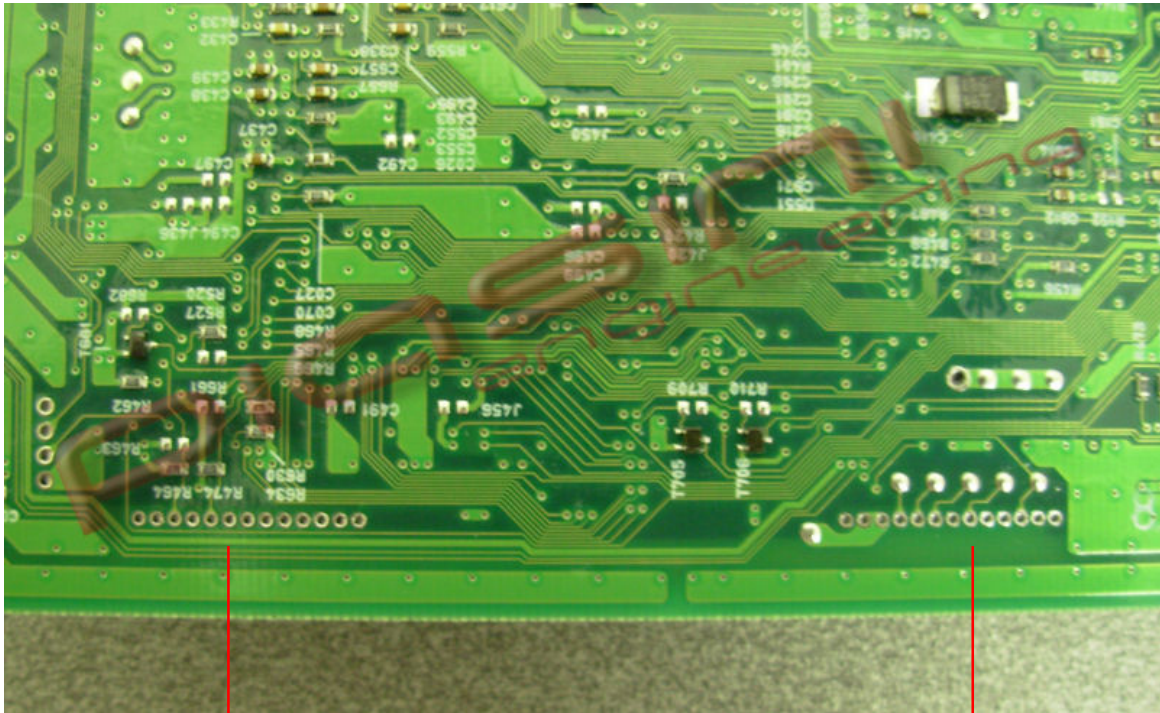


Where to connect the flat cable:



This are the pins where to connect the flat cable.

READ the ECU:



Connect the flat cable pin following the number like in picture.

