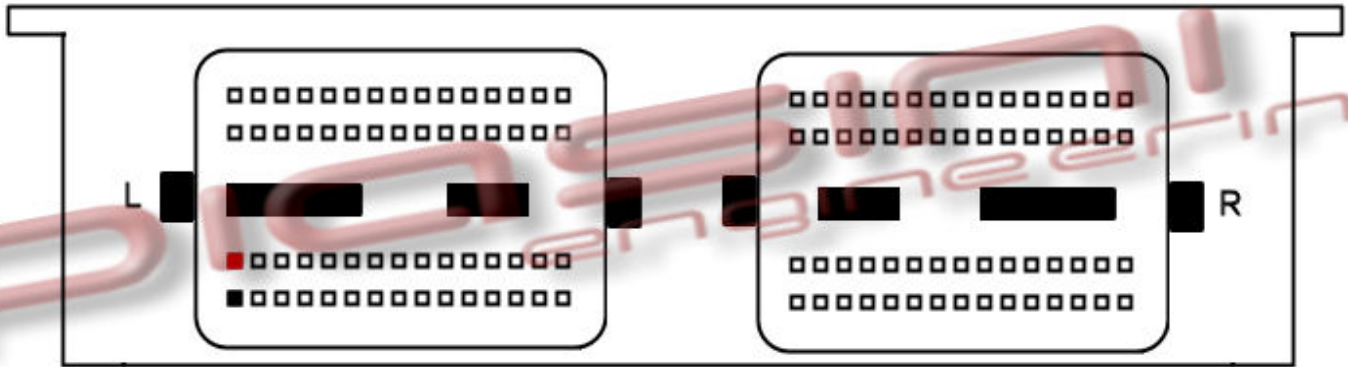




ECU : Mazda Denso



Connect as below:

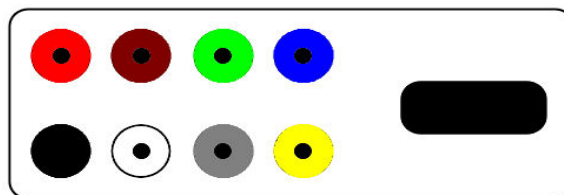
Serial Suite:

ECU Plug:

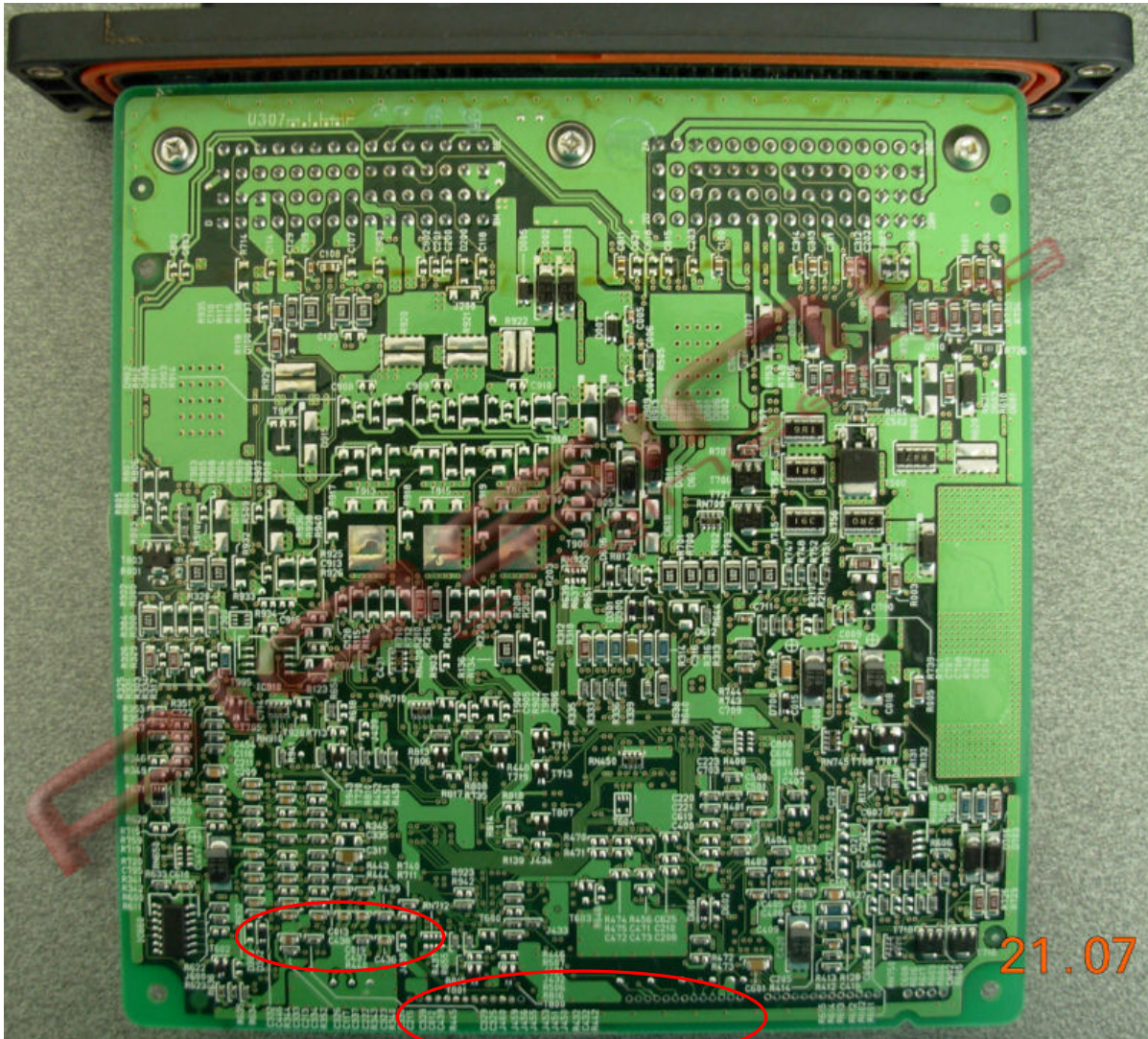
Red
Black

to
to

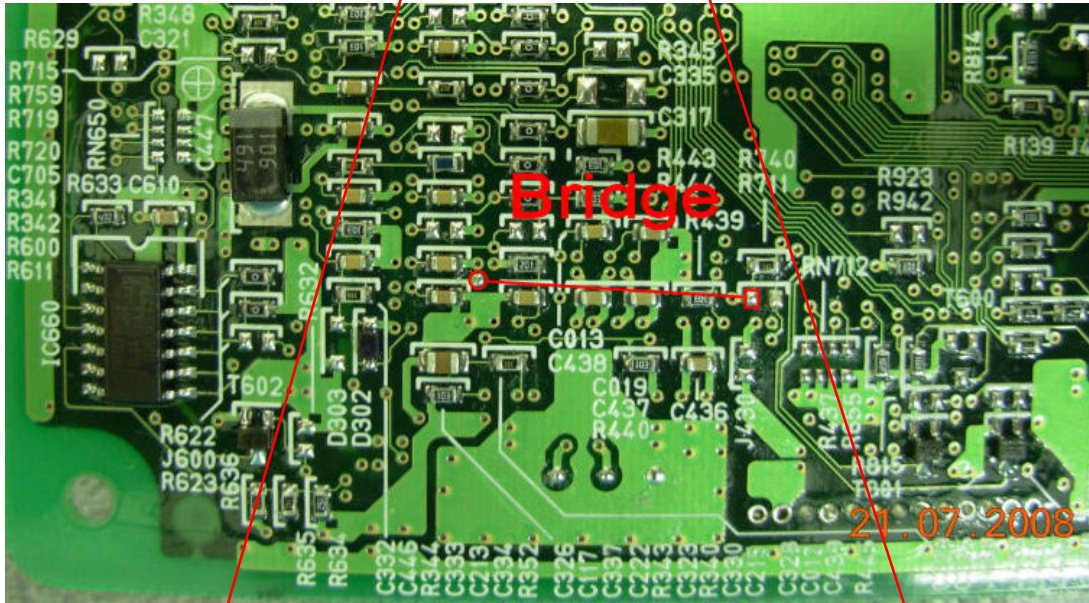
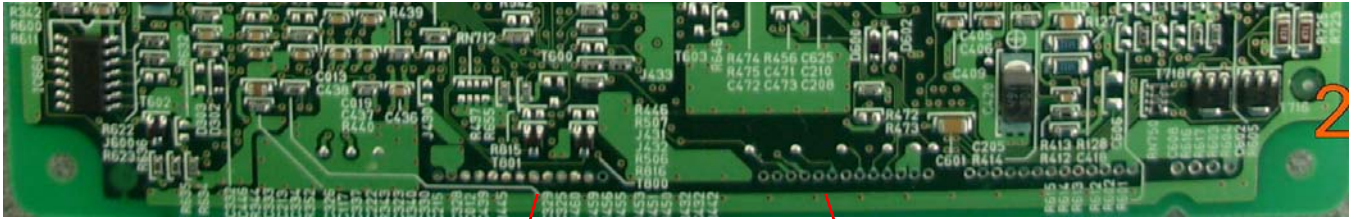
1 Pins Red (Power Supply +12 Volt)
1 Pins Black (Ground)



Where to connect the flat cable:

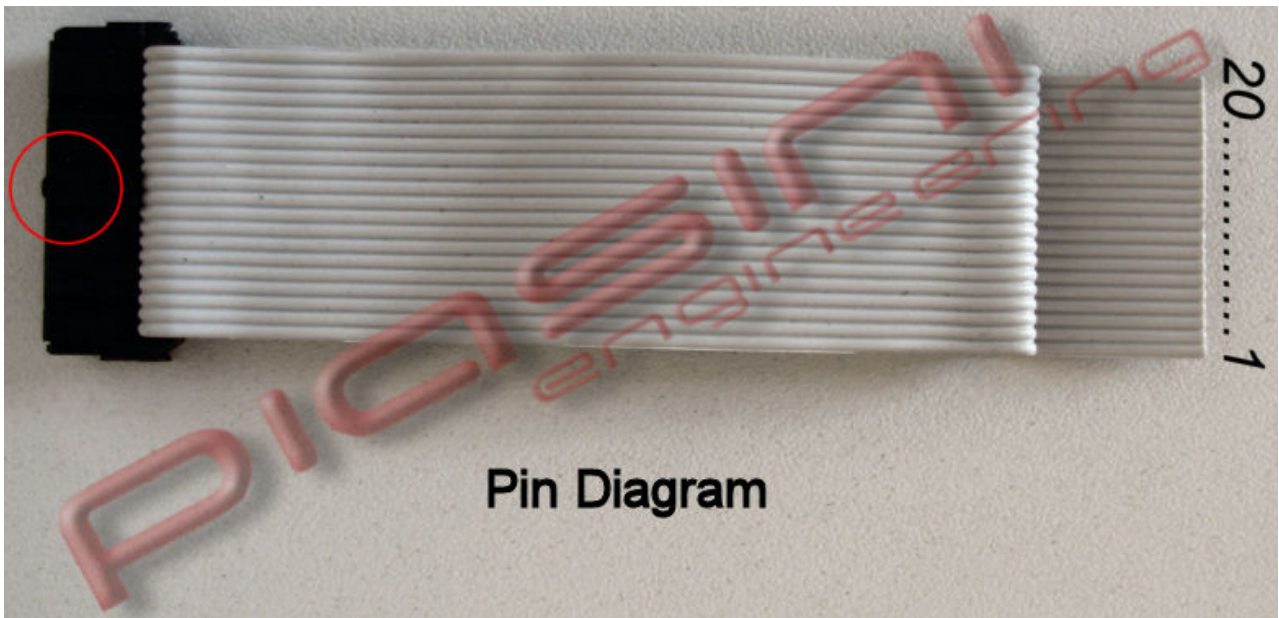


READ the ECU:



1 20 3 11 15 14 13 12 10 5

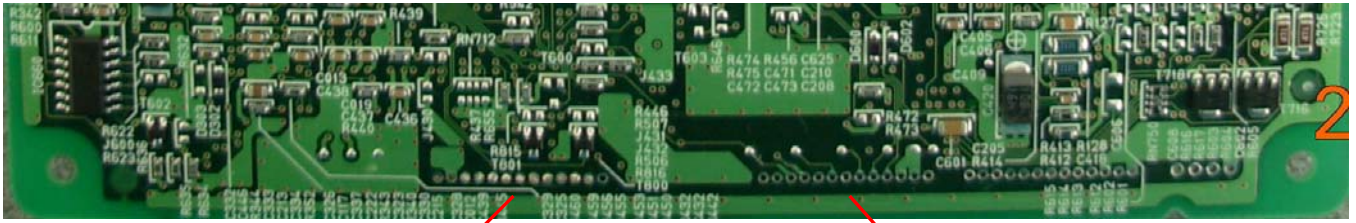
16 19 2



Pin Diagram

Put a wire (**bridge**) like in the picture, then connect the flat cable pin following the number like in picture.

WRITE the ECU:



You have to **remove the bridge used before**, and put another 2 wire(**Bridge**) like in the picture.

