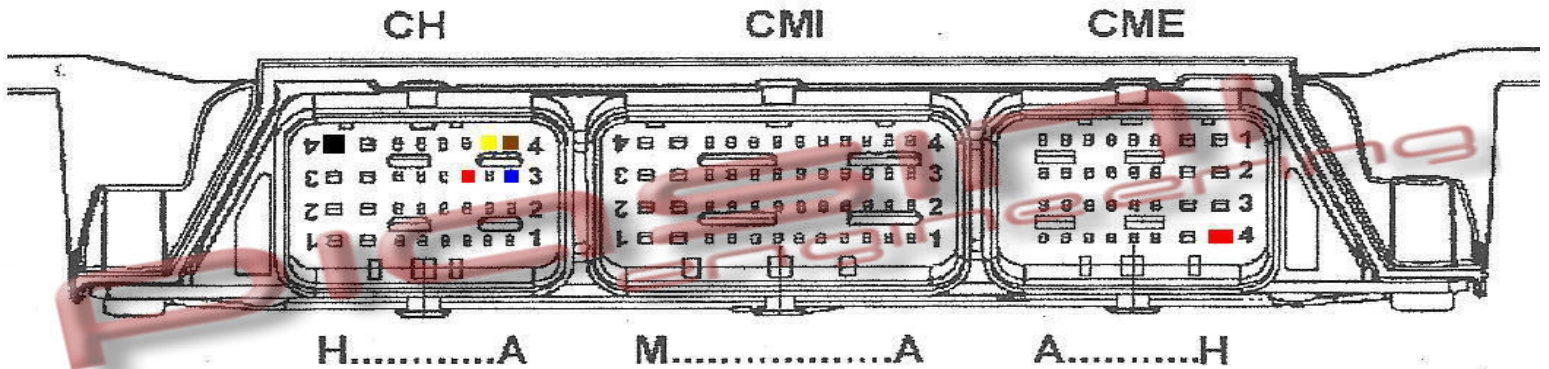


PIASINI engineering



ECU : MAGNETIMARELLI IAW-6LP



Pin out - Front view :

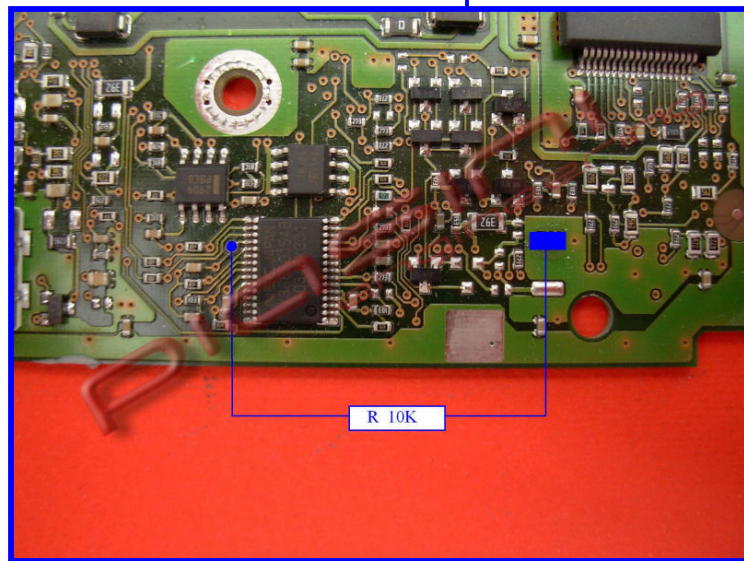
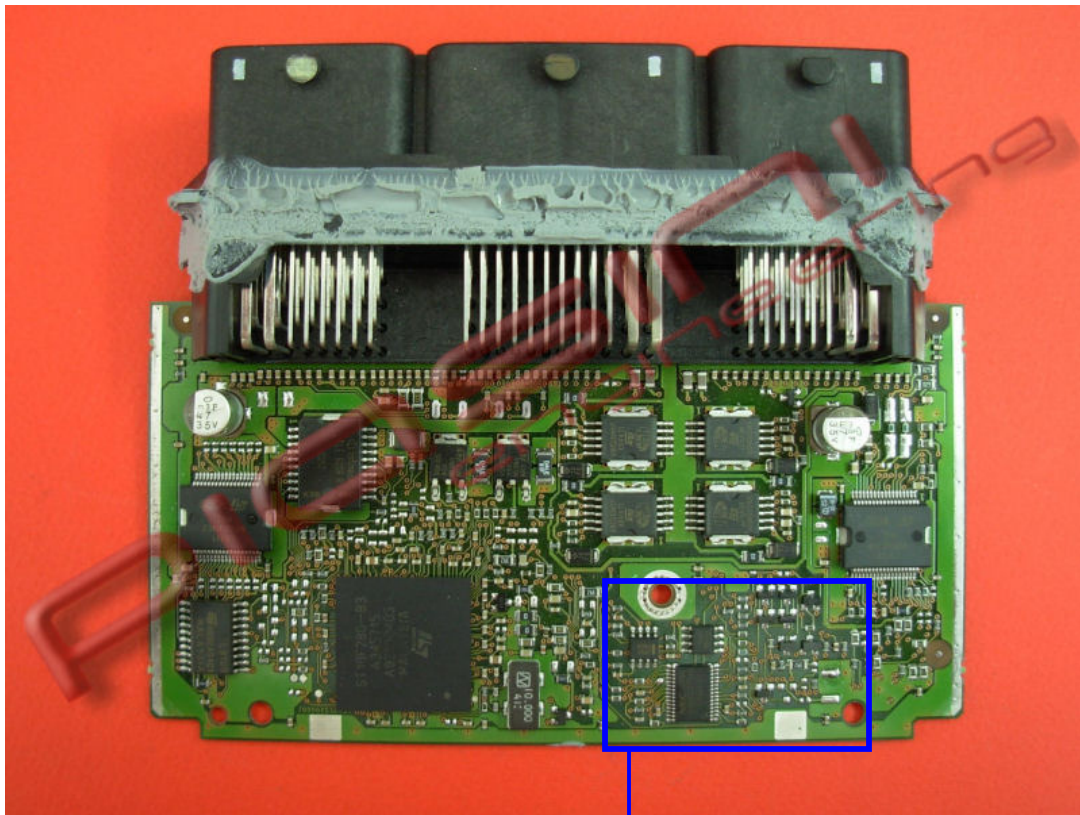
Plug CH:

- Pin H4 Ground
- Pin C3 Ignition
- Pin B4 K line
- Pin A4 Can H
- Pin A3 CAN L

Plug CME:

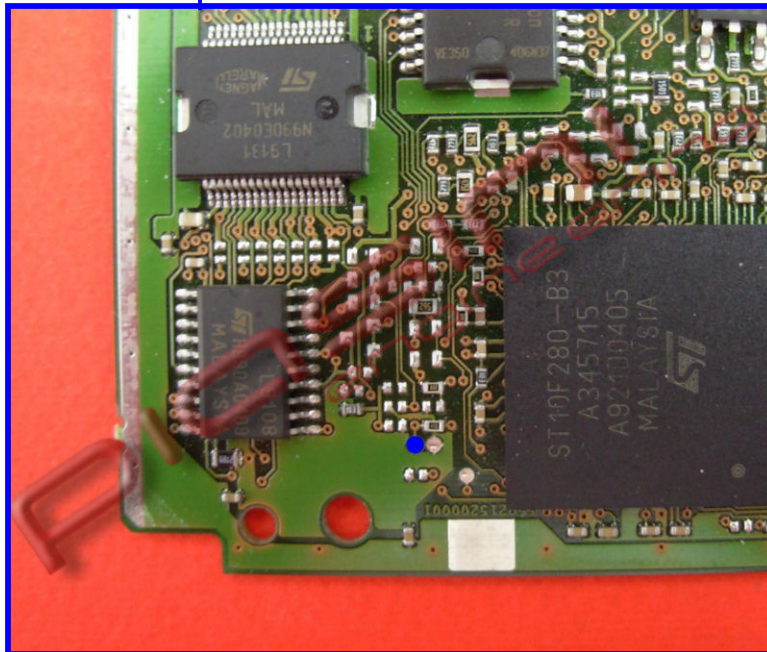
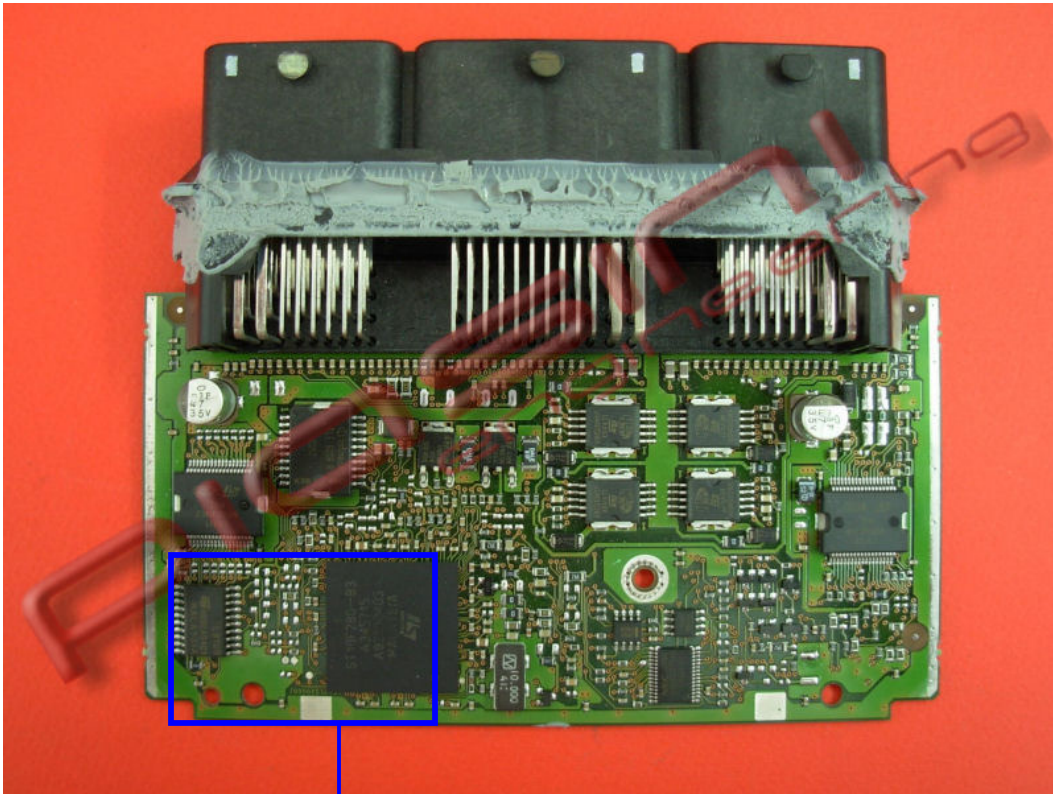
- Pin H4 Power Supply

Enable's Pin:



This is the Enable's Pin, that you have to connect to the ground, after this you can read the ECU.

BootStrap's Pin:



This is the BootStrap's Pin, you have to connect to the ground to qualify the reading of ECU, then supply the ECU and when you click on the Identify Button remove this pin from the ground