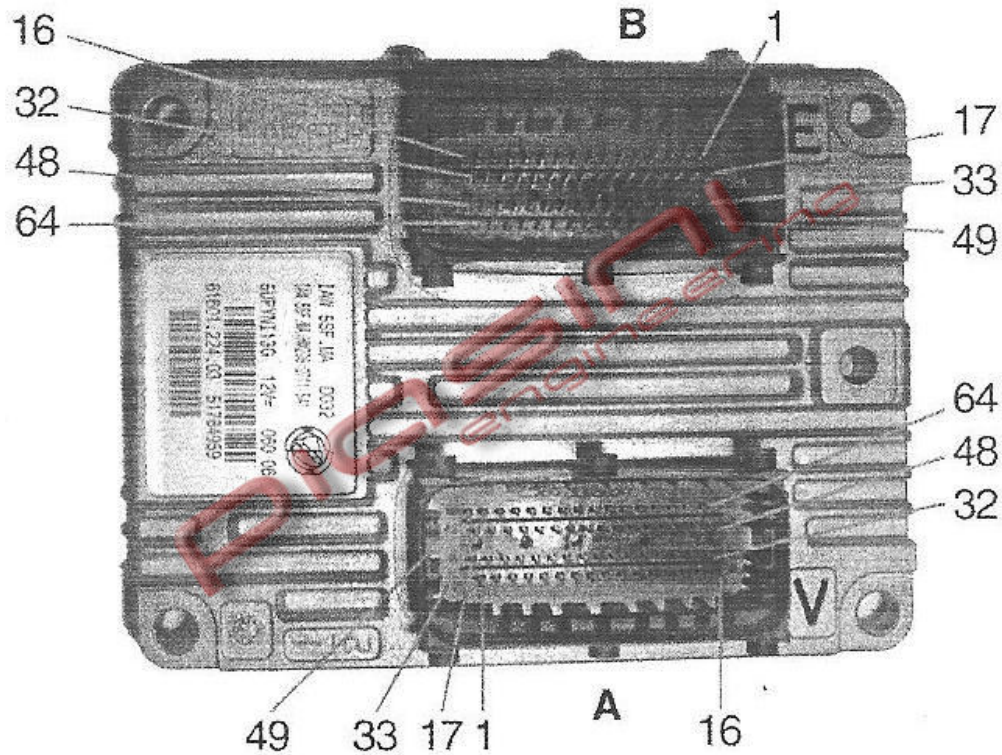




**ECU : MAGNETIMARELLI IAW-5SFR8**



### Pin out - Front view :

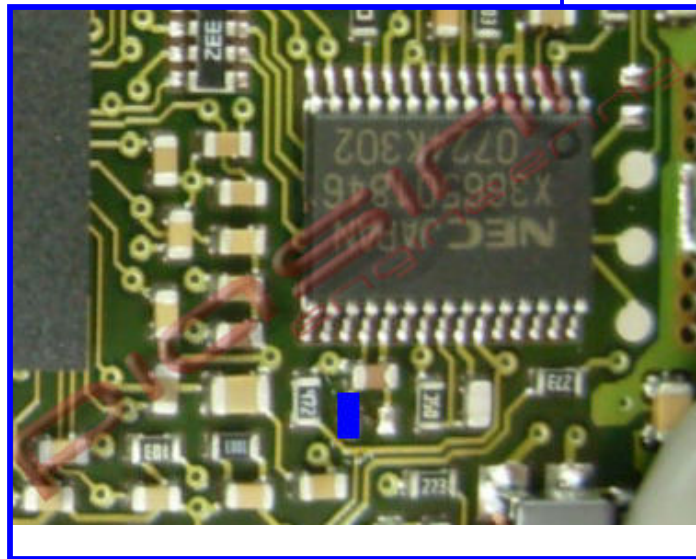
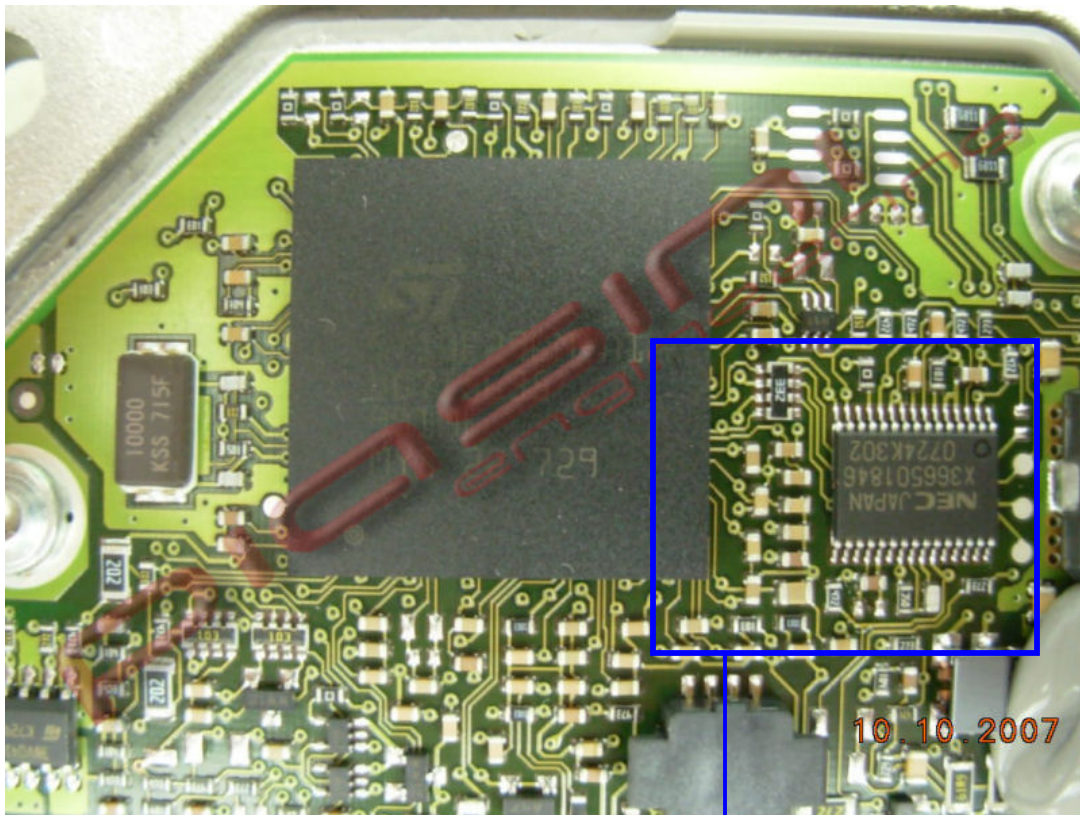
**Plug A:**

- Pin 1 Power Supply
- Pin 16 Ignition
- Pin 10 K line

**Plug B:**

- Pin 5 Ground
- Pin 21 Ground

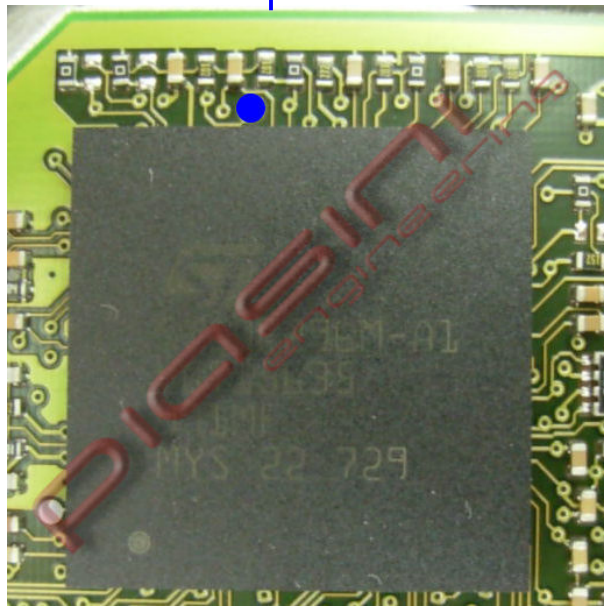
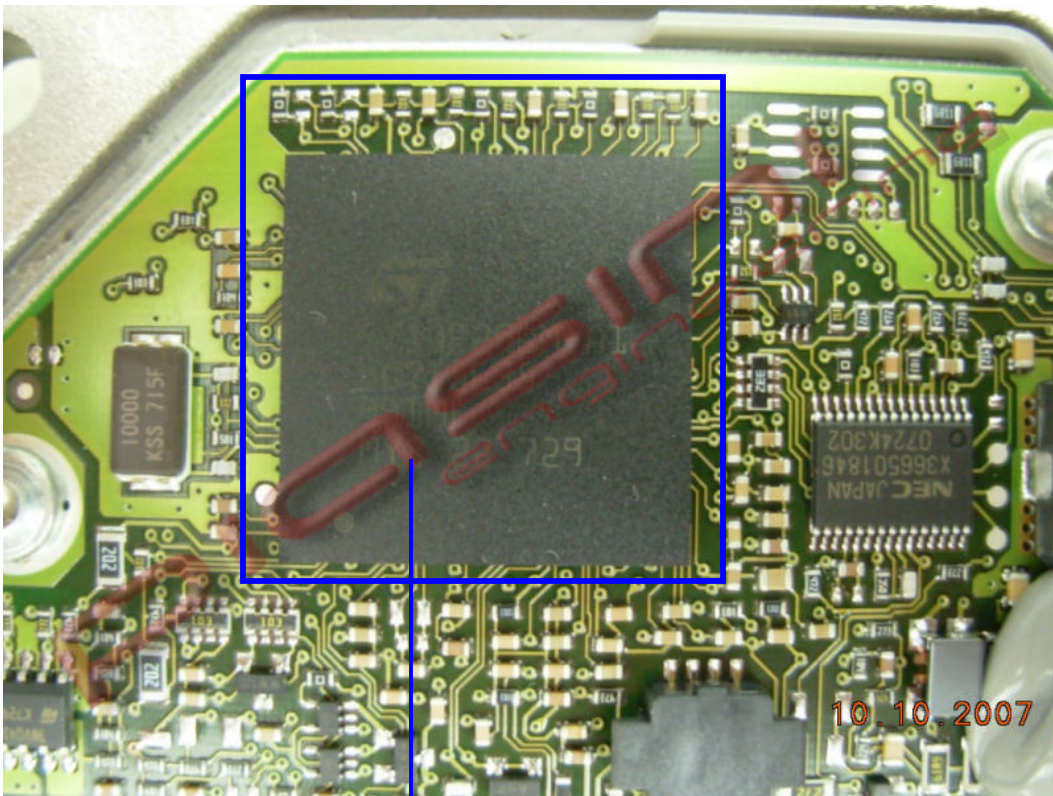
## Enable's Pin:



This is the Enable's Pin, that you have to connect to the ground, after this you can read the ECU.



## BootStrap's Pin:



This is the Boot Strap's Pin, you have to connect to the ground to qualify the reading of ECU, then supply the ECU and when you click on the Identify Button remove this pin from the ground