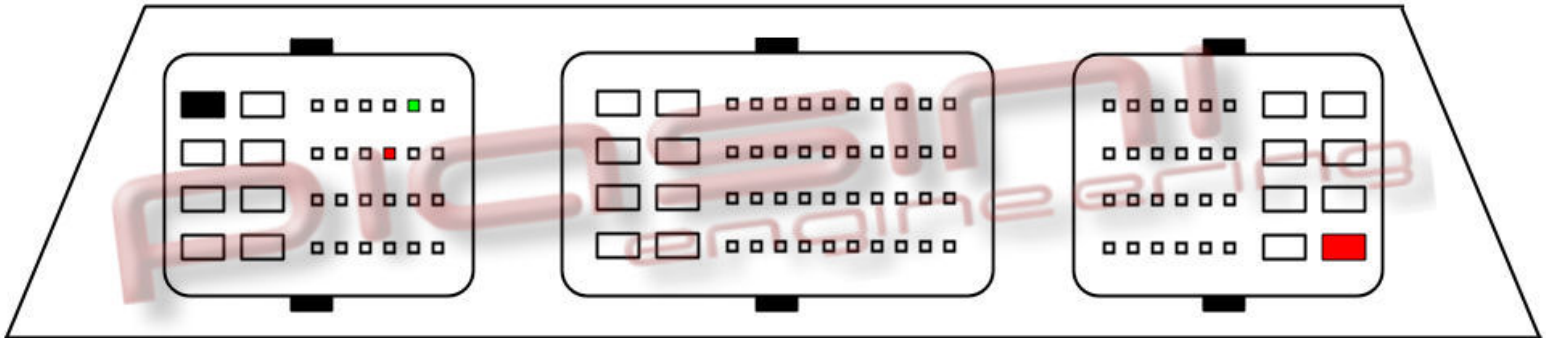


# PIASINI engineering



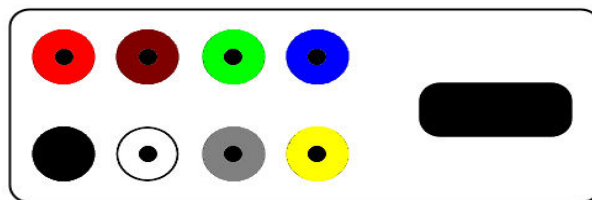
Connect as below:

Serial Suite:

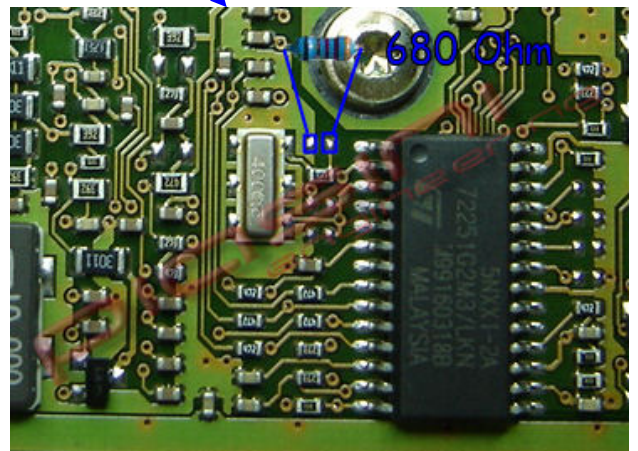
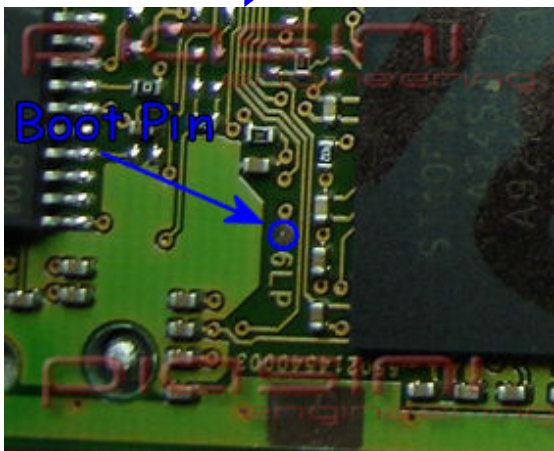
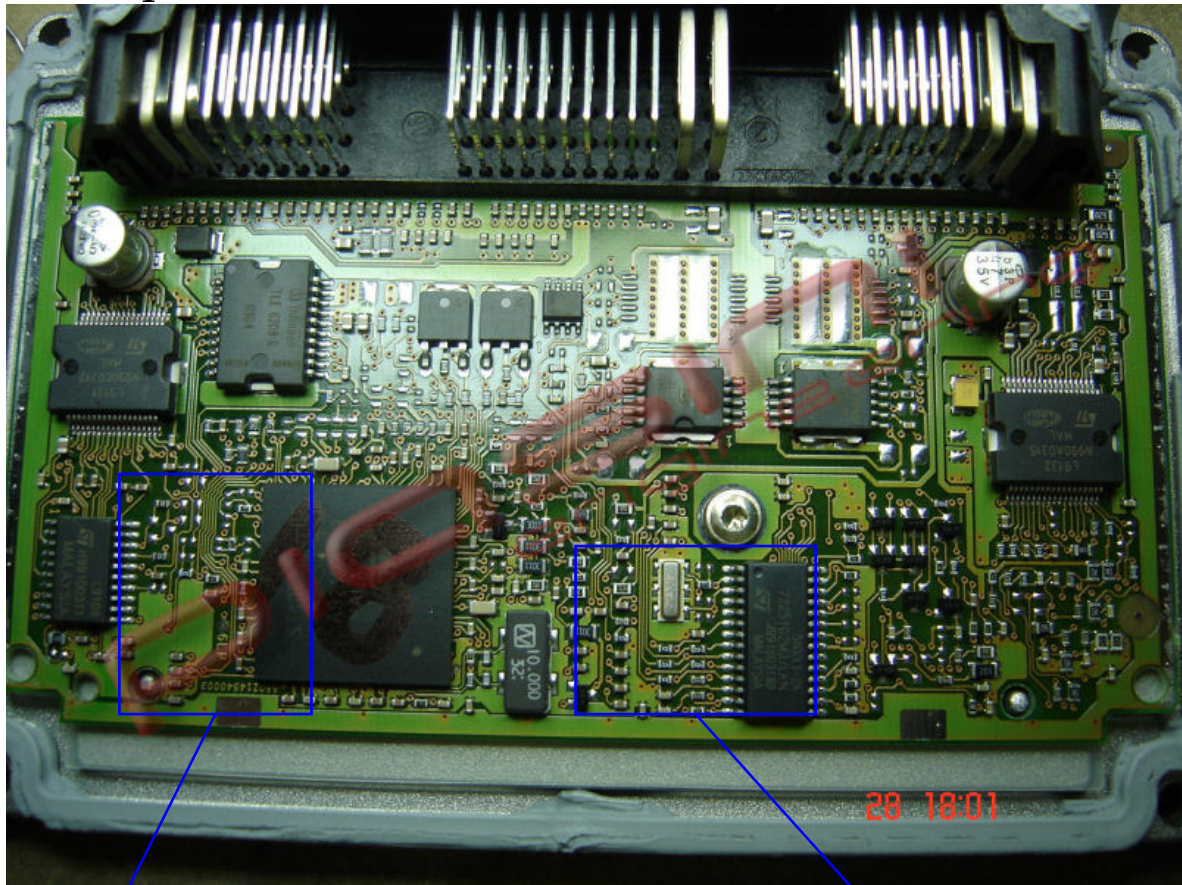
Red  
Black  
Green

ECU Plug:

to 2 Pins Red (Plug A) (Power Supply +12 Volt)  
to 1 Pins Black (Plug B) (Ground)  
to 1 Pin Green (Plug A) (K Line)



## Bootstrap's Pin:



Soldering the resistor (680 Ohm) like in the picture then you can continue to the bootstrap procedure.