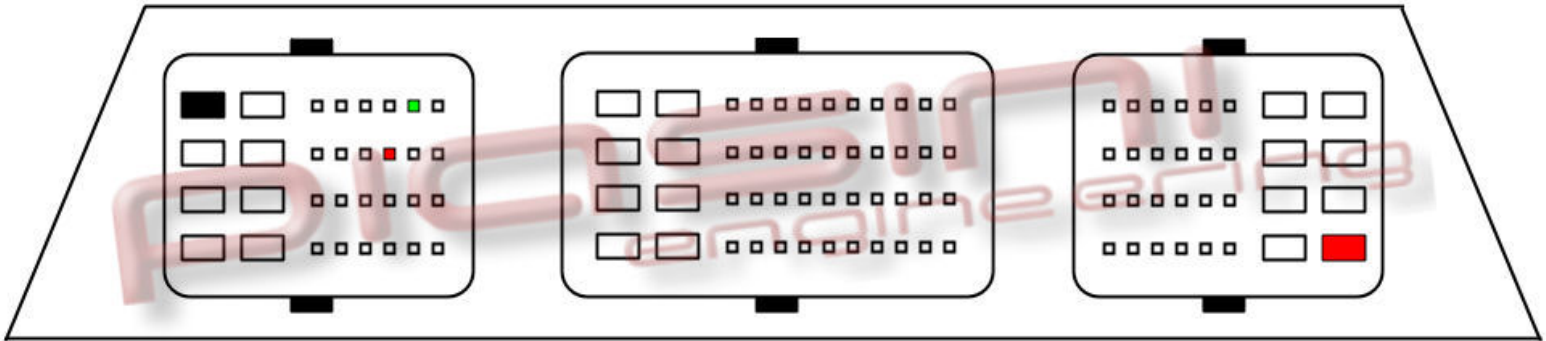


PIASINI engineering



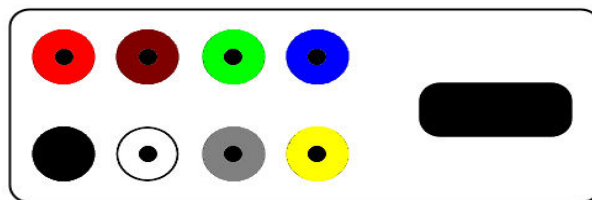
Connect as below:

Serial Suite:

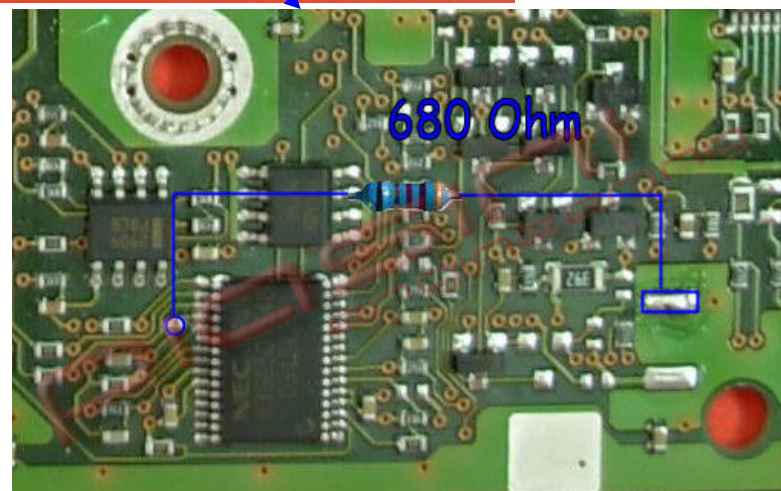
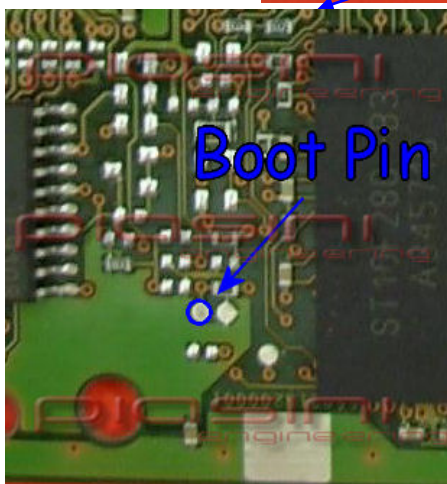
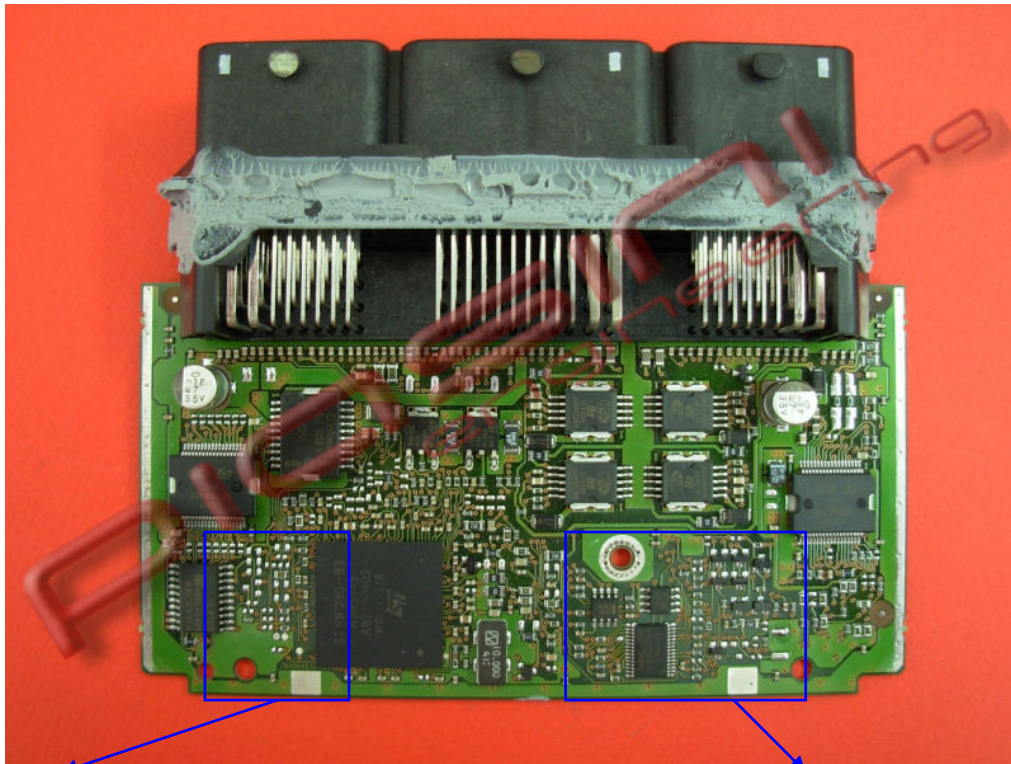
Red
Black
Green

ECU Plug:

| | | |
|----|-----------------------|-------------------------|
| to | 3 Pins Red (Plug A) | (Power Supply +12 Volt) |
| to | 2 Pins Black (Plug B) | (Ground) |
| to | 1 Pin Green (Plug A) | (K Line) |



Bootstrap's Pin:



Soldering the resistor (680 Ohm) like in the picture then you can continue to the bootstrap procedure.