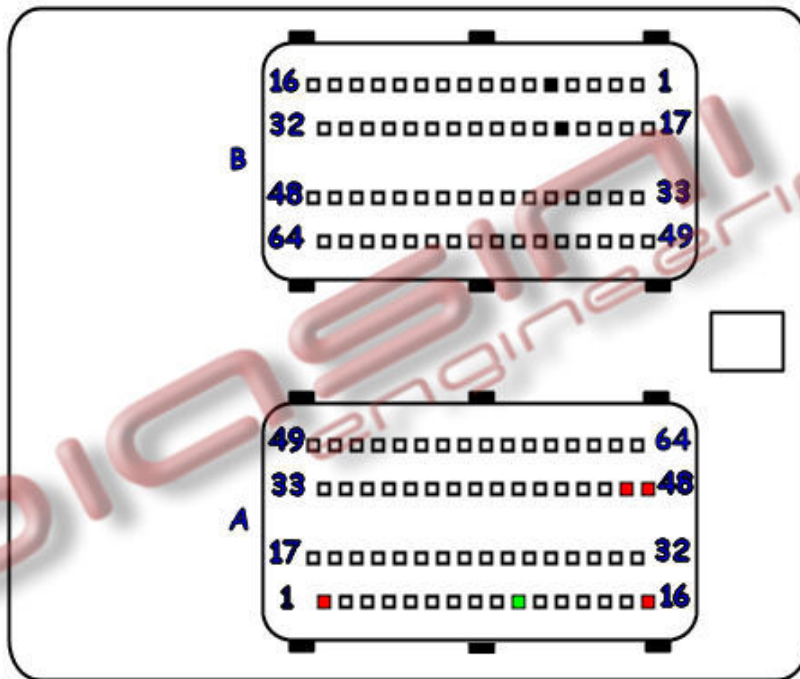




## ECU : IAW 5SF Fiat G. Punto

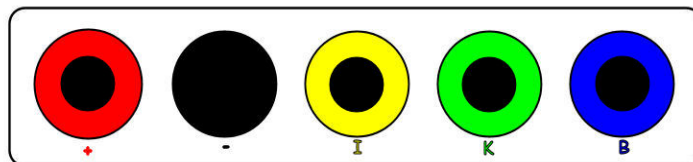


Connect as below:

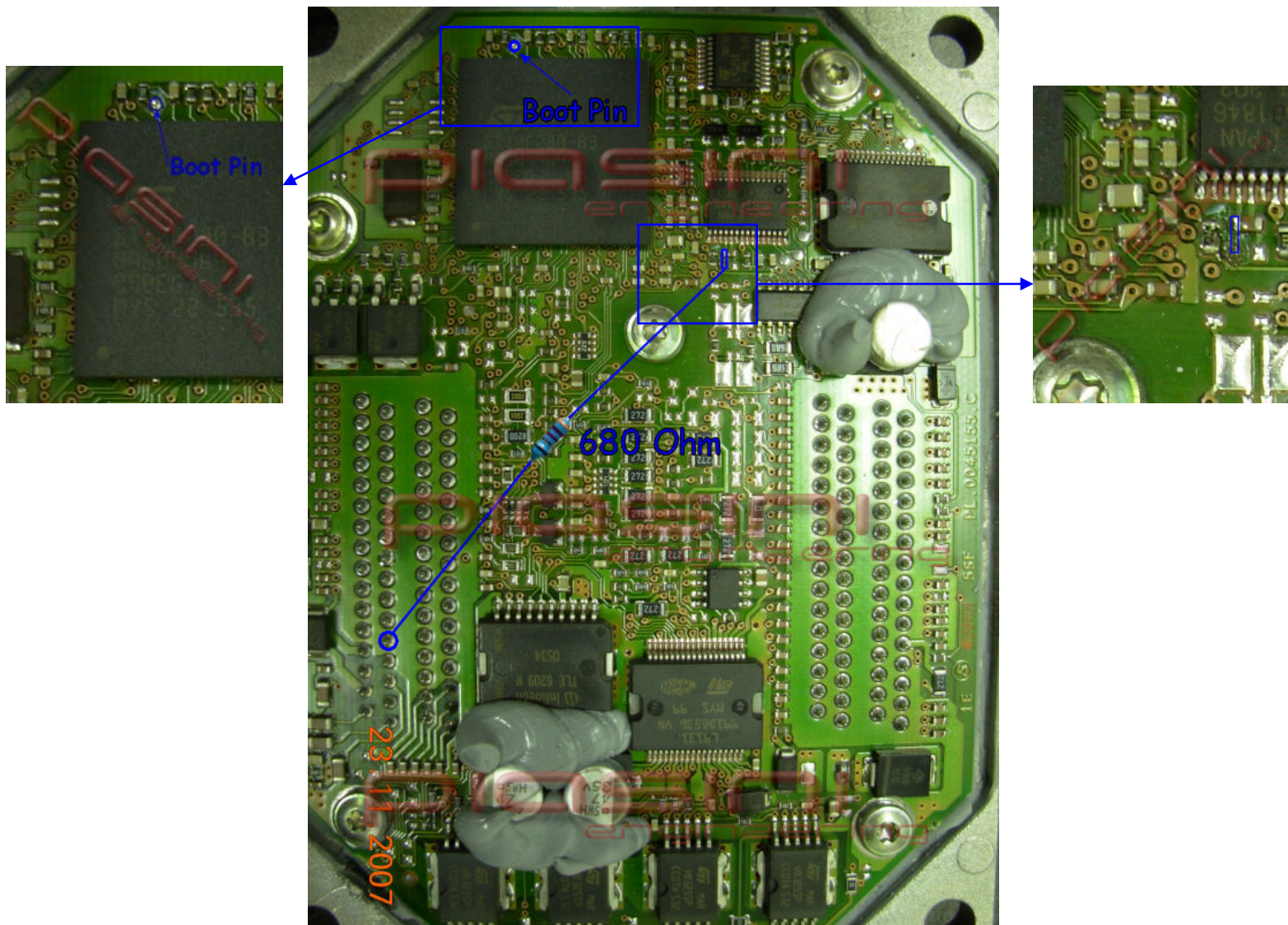
Serial Suite:

ECU Plug:

- |       |    |                       |                         |
|-------|----|-----------------------|-------------------------|
| Red   | to | 4 Pins Red (Plug A)   | (Power Supply +12 Volt) |
| Black | to | 2 Pins Black (Plug B) | (Ground)                |
| Green | to | 1 Pin Green (Plug A)  | (K Line)                |



## Bootstrap's Pin:



Soldering the resistor (680 Ohm) like in the picture then you can continue to the bootstrap procedure.