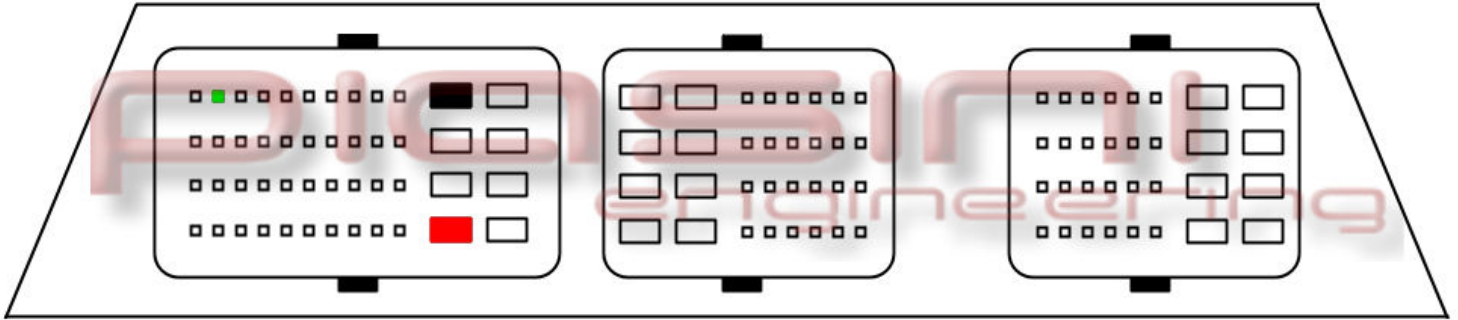


# PIASINI engineering

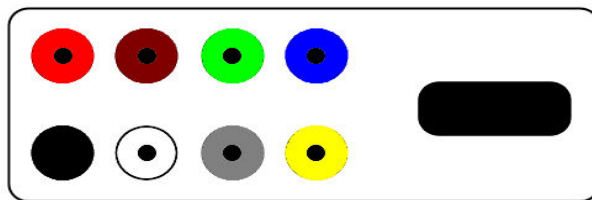


Connect as below:

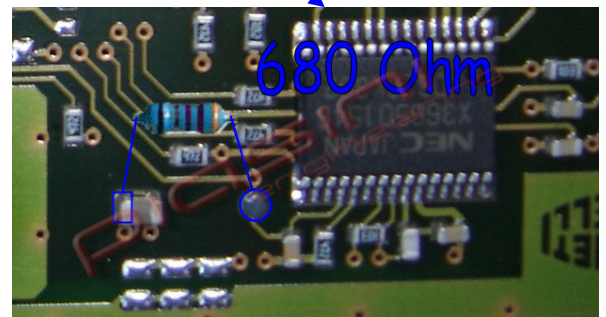
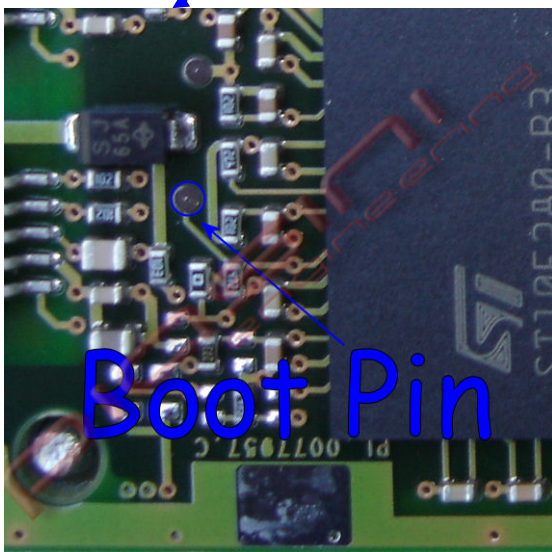
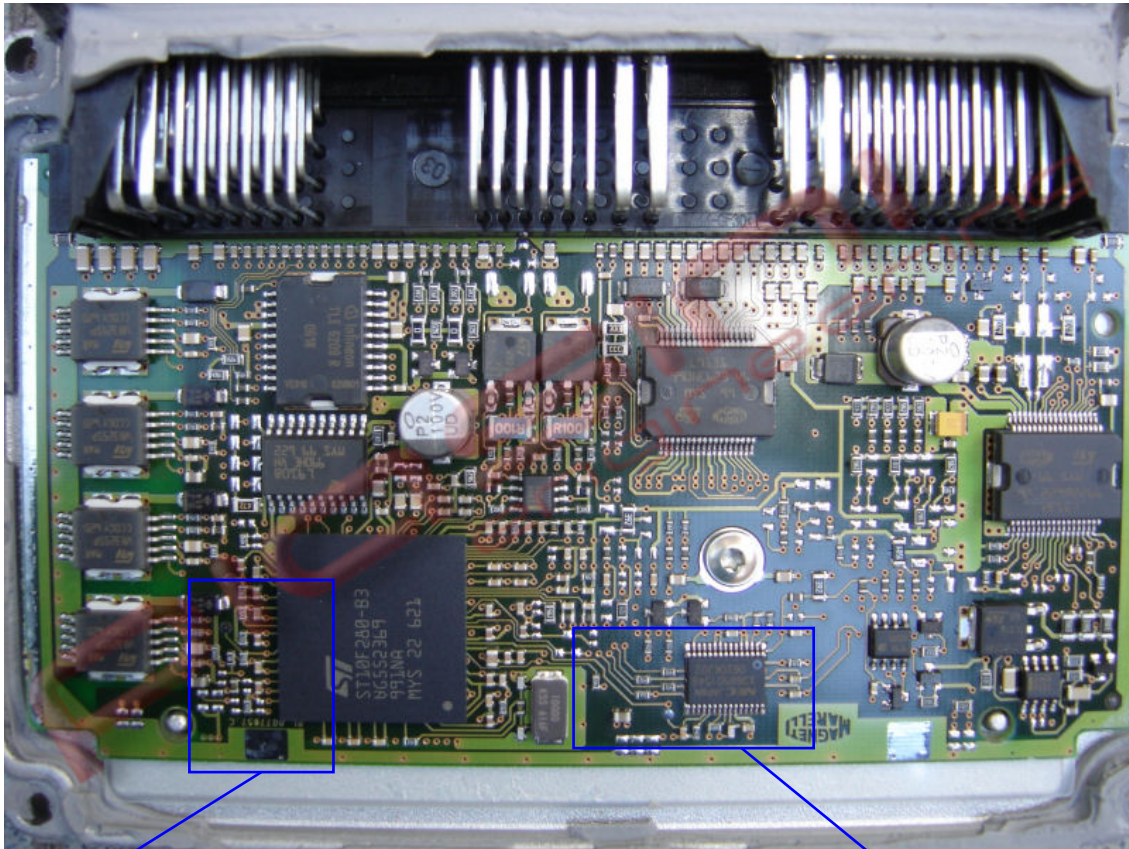
Serial Suite:

ECU Plug:

Red	to	1 Pins Red	(Power Supply +12 Volt)
Black	to	1 Pins Black	(Ground)
Green	to	1 Pin Green	(K Line)



## Bootstrap's Pin:



Soldering the resistor (680 Ohm) like in the picture then you can continue to the bootstrap procedure.