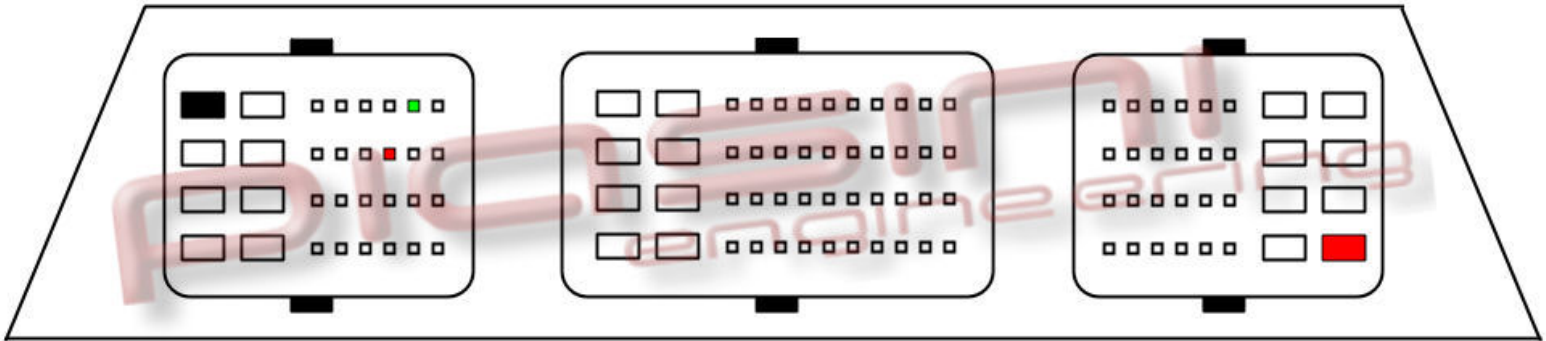


PIASINI engineering



Connect as below:

Serial Suite:

ECU Plug:

Red

to 2 Pins Red

(Power Supply +12 Volt)

Black

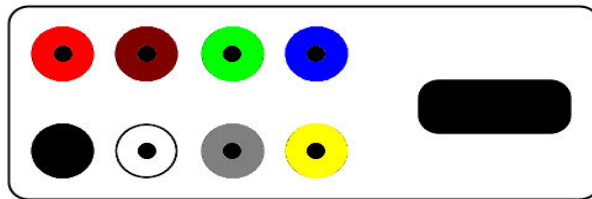
to 1 Pins Black

(Ground)

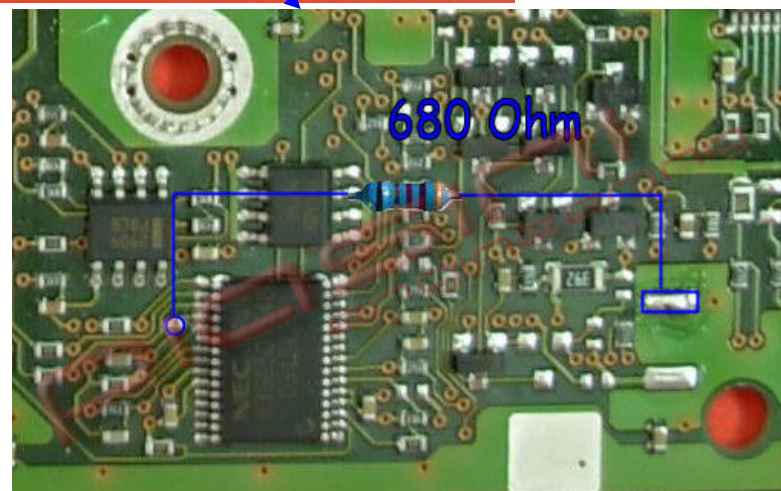
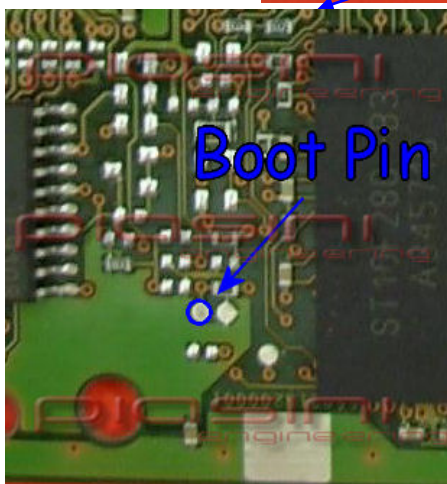
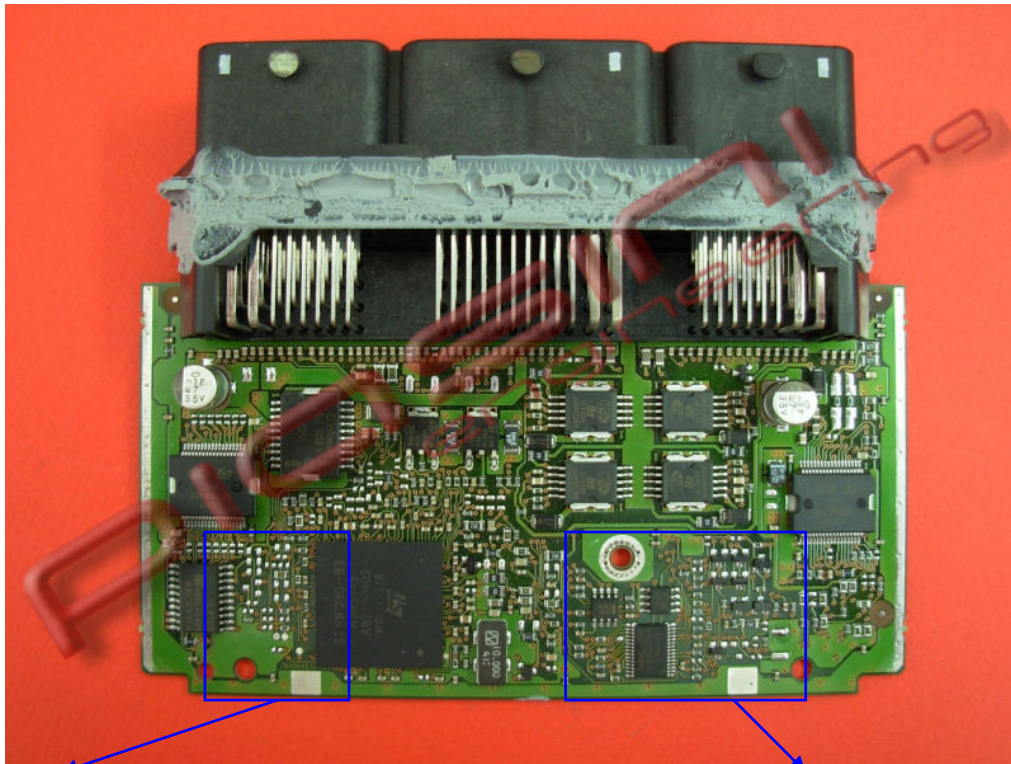
Green

to 1 Pin Green

(K Line)



Bootstrap's Pin:



Soldering the resistor (680 Ohm) like in the picture then you can continue to the bootstrap procedure.