

Connect as below:

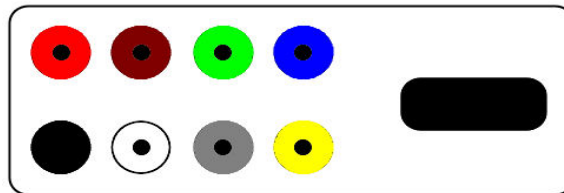
Serial Suite:

ECU Plug:

Red
Black

to
to

1 Pins Red (Power Supply +12 Volt)
1 Pins Black (Ground)

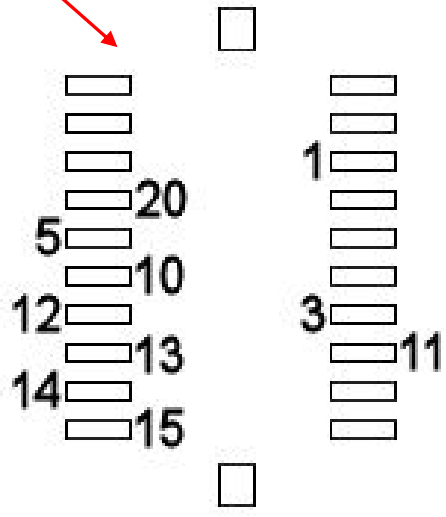
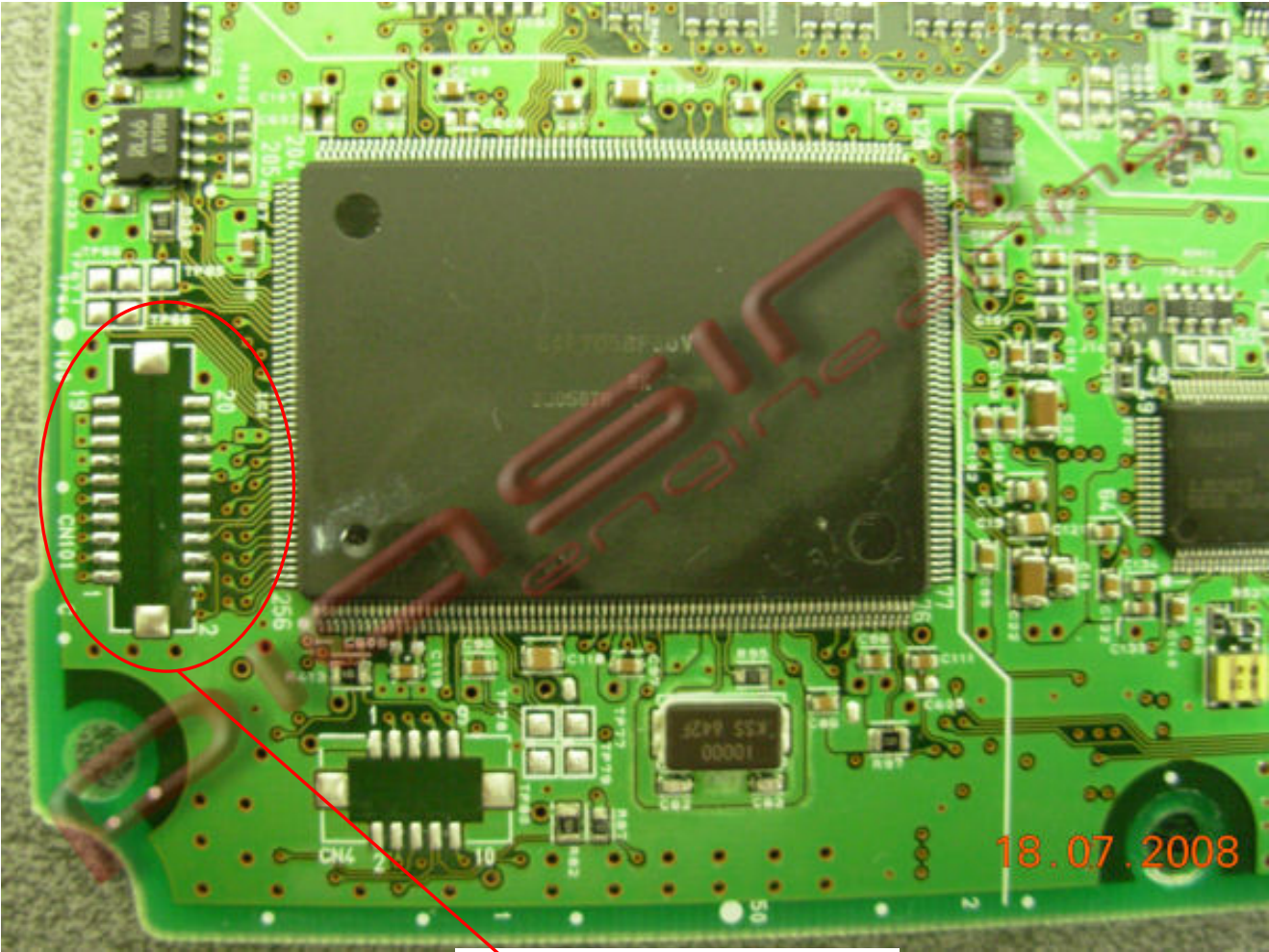


Where to connect the flat cable:

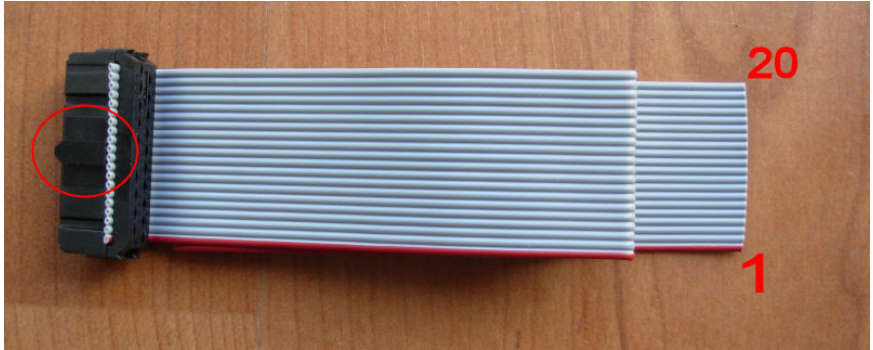


This is where you have to connect the flat cable.

READ the ECU:

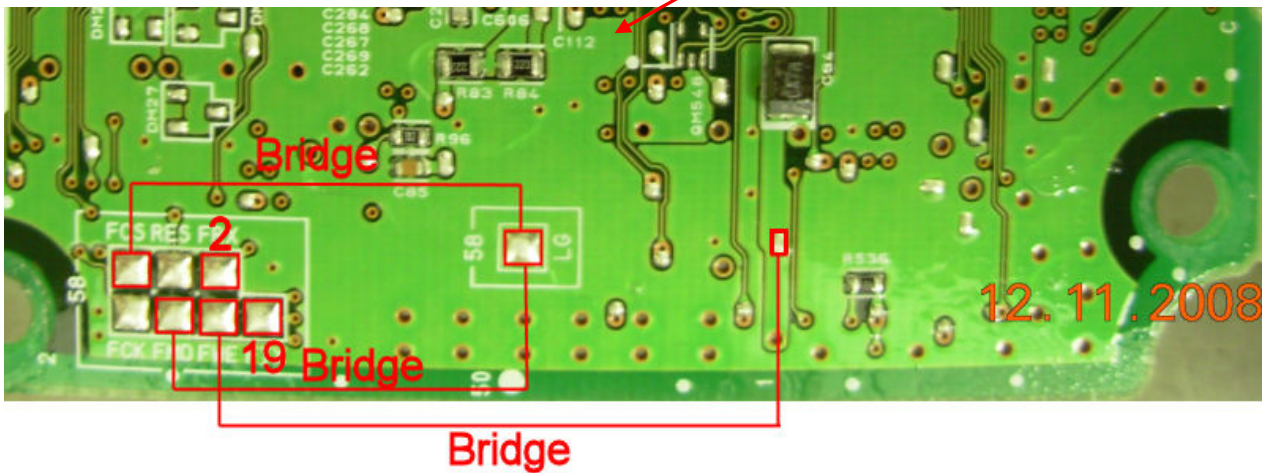
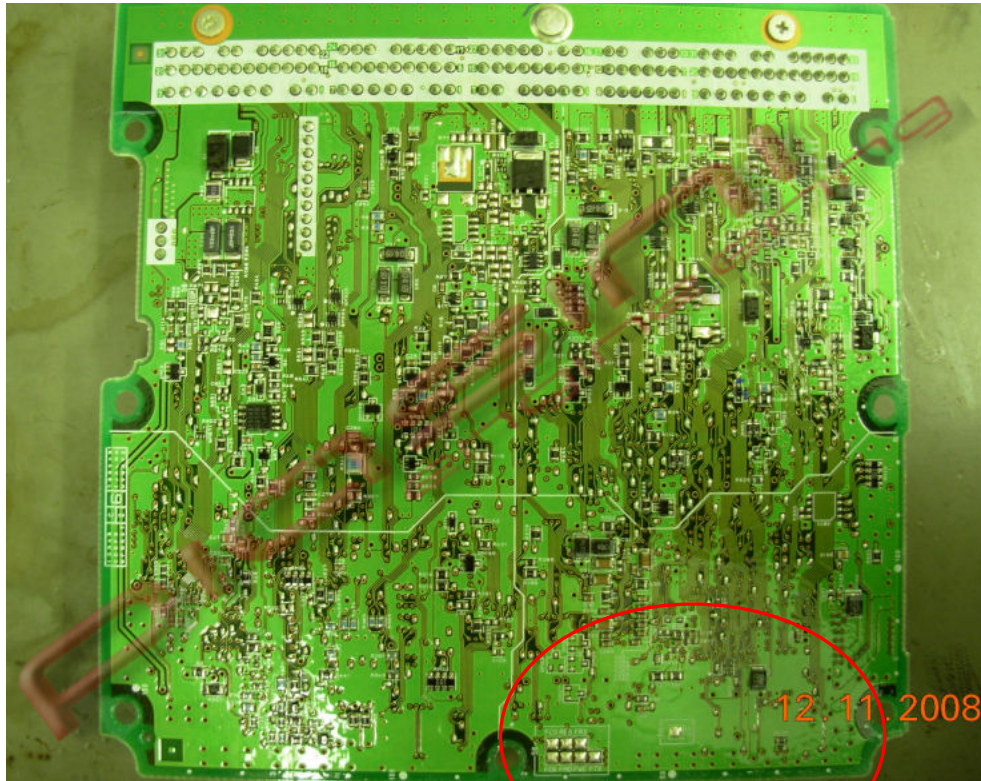


Connect the flat cable following the number like in the picture.



WRITE the ECU:

Back side:



For write the ECU put 3 wire(**Bridge**) like in the picture and connect other 2 wire (**2,19**) of the flat cable, the other wire of flat cable is still connect in the other side of ecu.